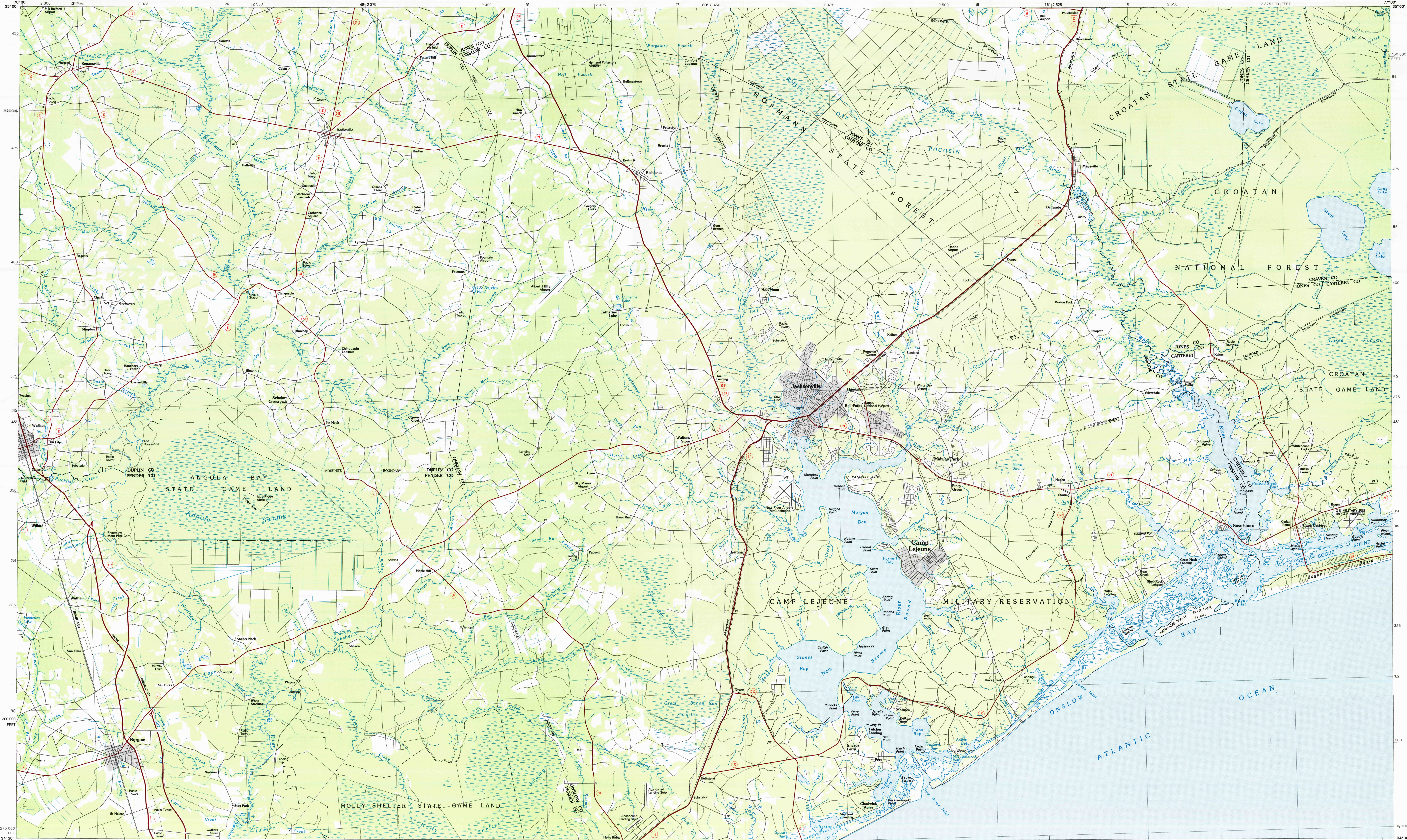


NEW RIVER, NORTH CAROLINA

30 X 60 MINUTE SERIES (PLANIMETRIC)



New River NORTH CAROLINA

1:100 000-scale planimetric map

30 X 60 MINUTE QUADRANGLE SHOWING

- Elevations in meters
- Highways, roads and other manmade structures
- Water features
- Woodland areas
- Geographic names

GEOLOGICAL SURVEY

1986

Produced by the United States Geological Survey
 Compiled from USGS 1:24 000-scale topographic maps dated 1952-1981. Planimetry revised from aerial photographs taken 1983 and other source data. Revised information not field checked. Map edited 1986.
 Projection and 10 000-meter grid, zone 18, Universal Transverse Mercator
 25 000-foot grid ticks based on North Carolina coordinate system 1927 North American Datum
 To place on the predicted North American Datum 1983, move the projection lines 13 meters south and 26 meters west
 There may be private inholdings within the boundaries of the National or State reservations shown on this map

NATIONAL GEOGRAPHIC VERTICAL DATUM OF 1929
 ELEVATIONS SHOWN TO THE NEAREST METER

THIS MAP COMPLIES WITH NATIONAL MAP ACCURACY STANDARDS

CONVERSION TABLE		DECLINATION DIAGRAM		ADJOINING MAPS	
Meters	Feet	1983	1984	1	2
1	3.2808	12° 45'	12° 44'	1	3
2	6.5617	12° 44'	12° 43'	4	5
3	9.8425	12° 43'	12° 42'	6	7
4	13.1234	12° 42'	12° 41'	8	8
5	16.4042	12° 41'	12° 40'		
6	19.6850	12° 40'	12° 39'		
7	22.9658	12° 39'	12° 38'		
8	26.2467	12° 38'	12° 37'		
9	29.5275	12° 37'	12° 36'		
10	32.8084	12° 36'	12° 35'		

To convert meters to feet multiply by 3.2808
 To convert feet to meters multiply by 0.3048

UTM grid convergence (CON) and 1983 magnetic declination (MAG) at center of map
 Diagram is approximate

FOR SALE BY U.S. GEOLOGICAL SURVEY
 USGS NMD HISTORICAL MAP
 AUG 14 1986
 REC'D FILE COPY

Topographic Map Symbols

Primary highway, hard surface	Light duty road, principal street, hard or improved surface	Other road or street, trail	Route marker: Interstate; U.S.; State	Railroad: standard gauge, narrow gauge	Tunnel: road; railroad	Built up area; locality; elevation	Airport; landing field; landing strip	National boundary	County boundary	State boundary	Land grant boundary	U.S. public lands survey: range, township, section	Range, township; section line: protracted	Power transmission line; pipeline	Dam; dam with lock	Cemetery; building	Windmill; water well; spring	Mine shaft; adit or cave; mine, quarry; gravel pit	Campground; picnic area; U.S. location monument	Ruins; cliff dwelling	Disturbed surface: strip mine, levee, sand	Contours: index; intermediate; supplementary	Bathymetric contours: index; intermediate	Stream, lake: perennial; intermittent	Rapids, large and small; falls, large and small	Area to be submerged; marsh, swamp	Land subject to controlled flooding	Scrub; mangrove	Orchard; vineyard
-------------------------------	---	-----------------------------	---------------------------------------	--	------------------------	------------------------------------	---------------------------------------	-------------------	-----------------	----------------	---------------------	--	---	-----------------------------------	--------------------	--------------------	------------------------------	--	---	-----------------------	--	--	---	---------------------------------------	---	------------------------------------	-------------------------------------	-----------------	-------------------

A pamphlet describing topographic maps is available on request