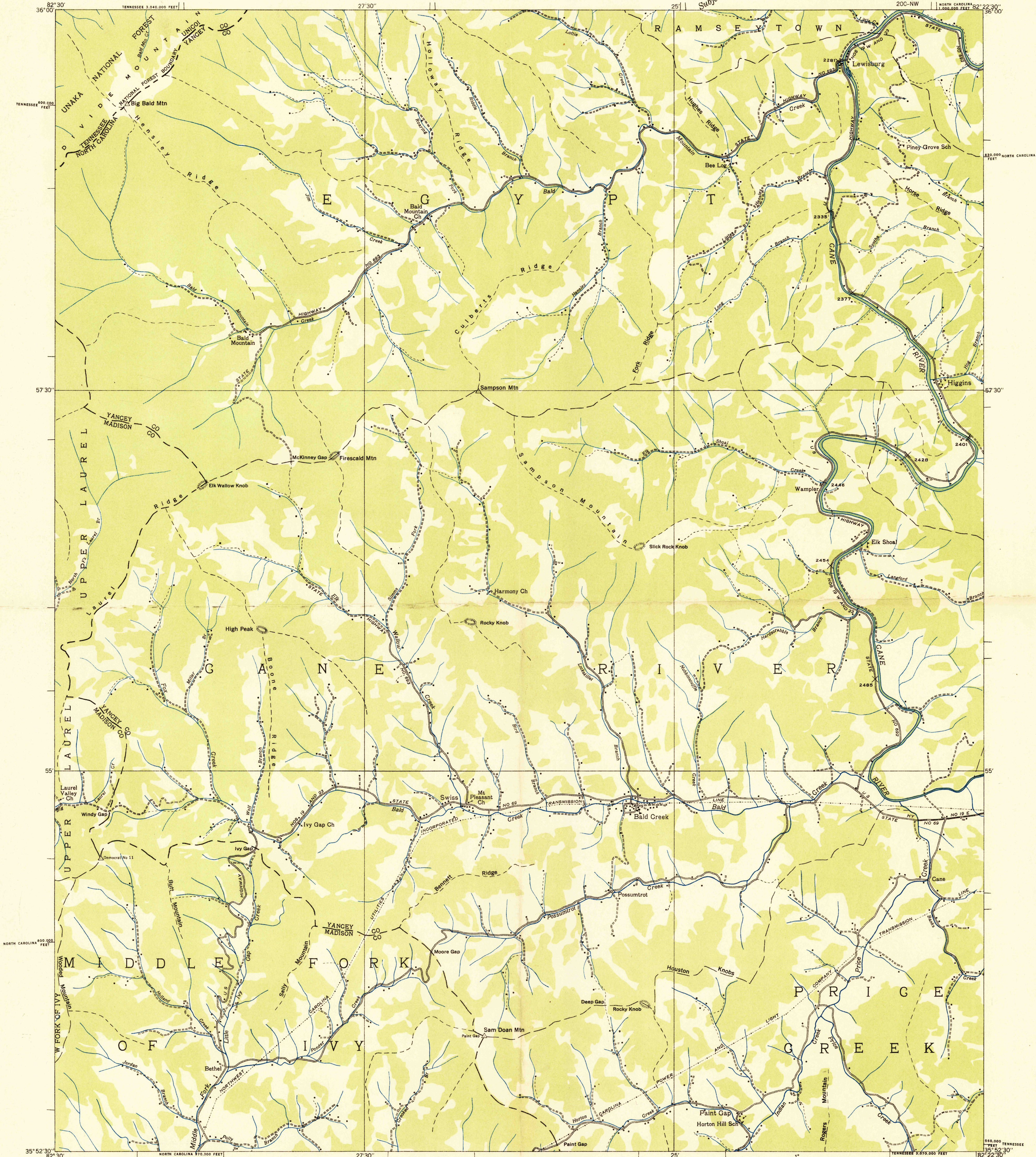
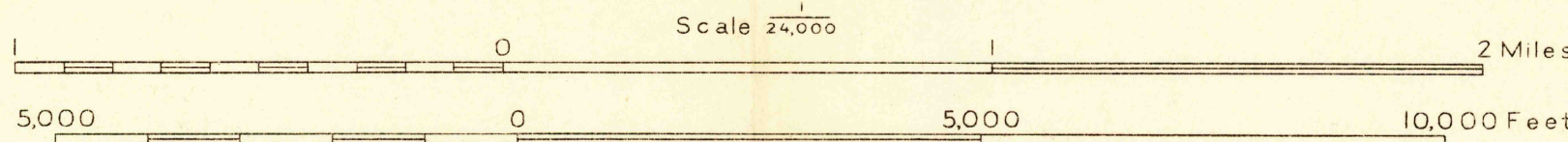


Advance sheet
Subject to correction



Albert Pike, Division Engineer
Compiled by U. S. Geological Survey from aerial photographs
Control by U. S. Geological Survey and Corps of Engineers, U. S. Army
Field examination in 1935



Datum is mean sea level

Polyconic projection. 1927 North American datum
10,000 foot grid based on North Carolina and
Tennessee rectangular coordinate systems

BALD CREEK, N. C.-TENN.
200-NW

U.S.G.S.
Historical File
Topographic Division
FILE COPY
TOPOGRAPHIC DIVISION

HISTORICAL