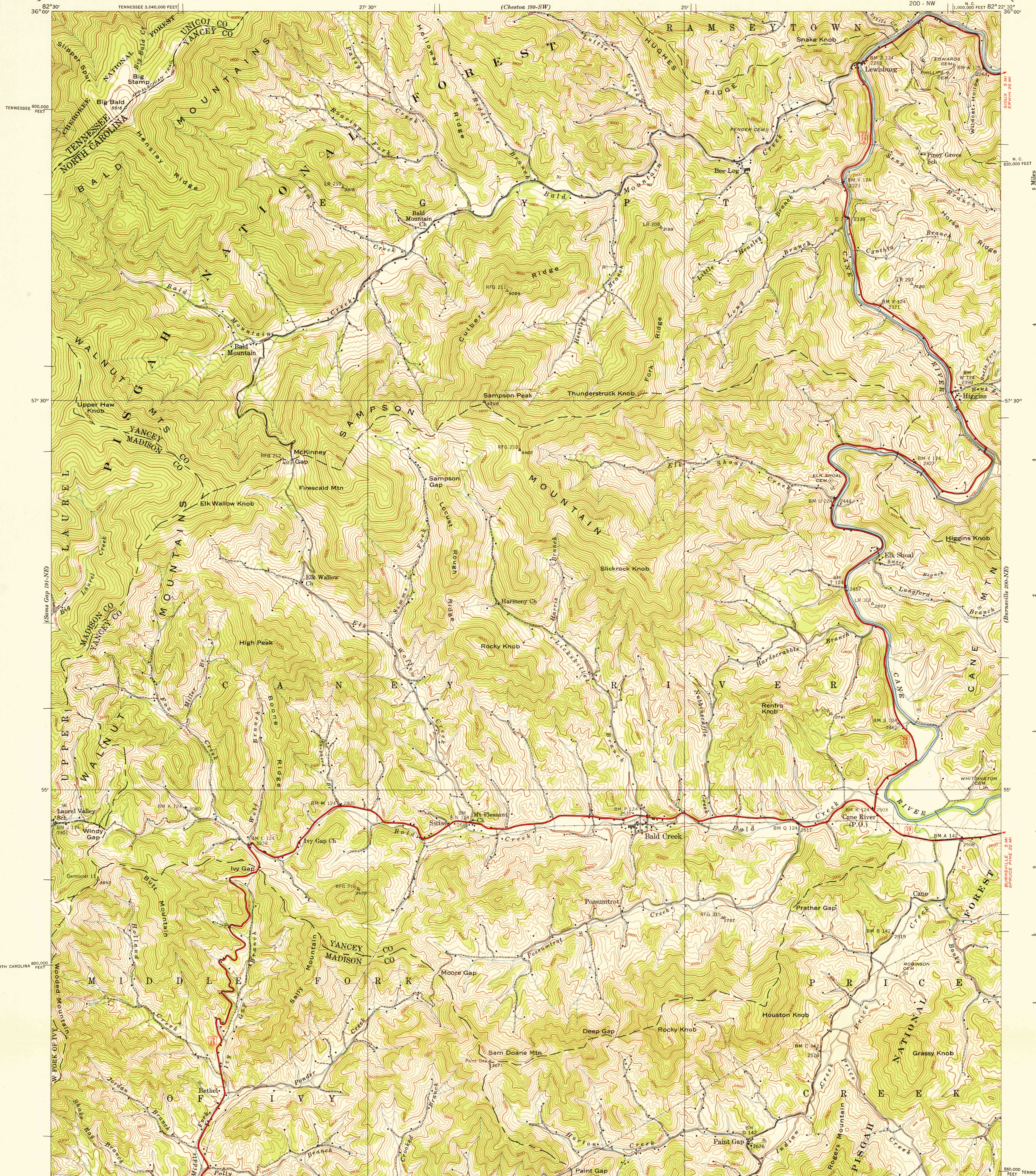


U. S. G. S.  
FILE COPY  
Inspection and Editing.

UNITED STATES  
TENNESSEE VALLEY AUTHORITY  
MAPS AND SURVEYS DIVISION

NORTH CAROLINA - TENNESSEE  
BALD CREEK QUADRANGLE

200 - NW  
N. C.  
1:1,000,000 FEET 82° 22' 30" 36° 00'



Control by USC&GS, USGS, and TVA.  
Topography by Fairchild Aerial Surveys, Inc.  
by stereophotogrammetric methods.  
Field examination by Tennessee Valley Authority - 1939  
Office inspection and review by the Geological Survey.

Maps distributed by the Geological Survey.

APPROXIMATE MEAN  
DECLINATION, 1939

Scale 24000  
1 inch = 2 miles  
1:24,000  
5000 10000 Feet  
1 2 Kilometers

U. S. G. S.  
FILE COPY  
Inspection and Editing.

USCS  
Historical File  
Topographic Division

Polyconic projection. 1927 North American datum  
10,000 foot grid based on North Carolina and  
Tennessee rectangular coordinate systems

ROUTES USUALLY TRAVELED  
HARD, IMPERVIOUS SURFACES  
OTHER SURFACE IMPROVEMENTS  
19 U. S. ROUTE 69 STATE ROUTE

BALD CREEK, N. C.-TENN.  
200 - NW  
Edition of 1939  
N5552.5-W8222.5 / 7.5

APR 1 - 1941