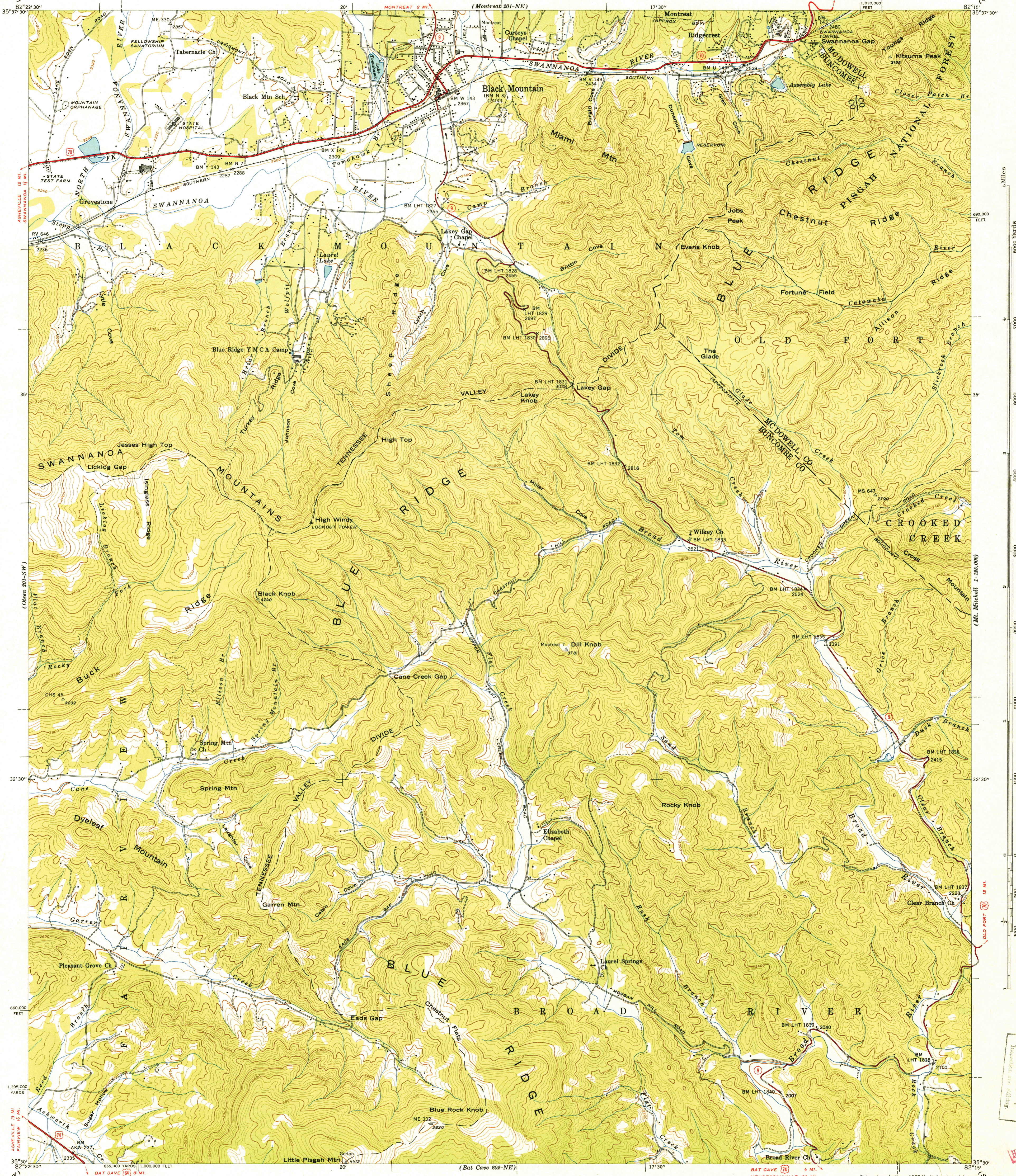


U.S.G.S.
FILE COPY
Inspection and Mailing

UNITED STATES
DEPARTMENT OF THE INTERIOR
GEOLOGICAL SURVEY

UNITED STATES
TENNESSEE VALLEY AUTHORITY
MAPS AND SURVEYS DIVISION

NORTH CAROLINA
BLACK MOUNTAIN QUADRANGLE
201-SE
MARION 21 MI.
OLD FORT 8 MI.

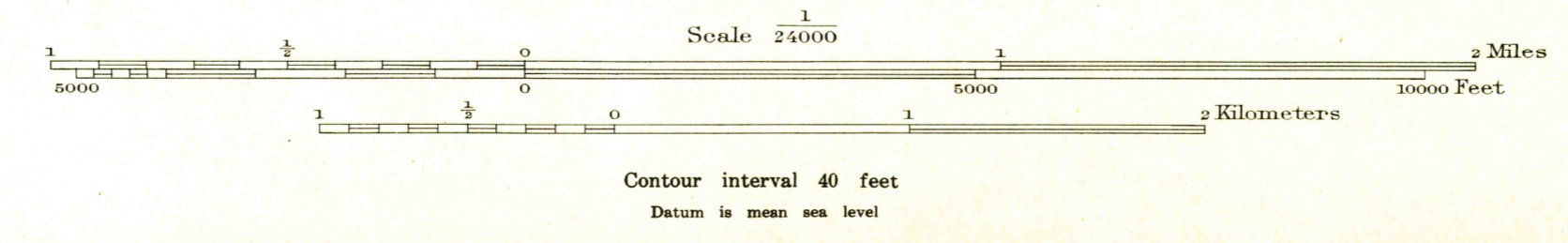


(Creech 202-NW)
ASHEVILLE 12 MI.
SWANNANOA 12 MI.
(Orem 201-SW)
ASHEVILLE 13 MI.
FAIRVIEW 12 MI.
FRUITLAND 202-NW

(Old Fort 210-NW)
MILES
6000
4000
2000
0
2000
4000
6000
YARDS
1:25,000
1:25,000
HISTORICAL
INSPECTION AND MAILING

Control by USC&GS, USGS, and TVA
Topography by Geological Survey from aerial
photographs by stereophotogrammetric methods
Field examination by Tennessee Valley Authority, 1941
Maps distributed by the Geological Survey

TRUE NORTH
MAGNETIC NORTH
APPROXIMATE MEAN
DECLINATION, 1942



USCS
Historical File
Topographic Division
POLYCONIC PROJECTION, 1927 NORTH AMERICAN DATUM
10,000 FOOT GRID BASED ON NORTH CAROLINA
RECTANGULAR COORDINATE SYSTEM
5000 YARD GRID BASED ON U.S. ZONE SYSTEM, B
ROUTES USUALLY TRAVELED
HARD IMPERVIOUS SURFACES
OTHER SURFACE IMPROVEMENTS
US ROUTE
STATE ROUTE
BLACK MOUNTAIN, N.C.
201-SE
Edition of 1943
N3530 W8215 7.5
ENGRAVED AND PRINTED BY WILLIAMS & HEINTZ CO., WASH., D. C.