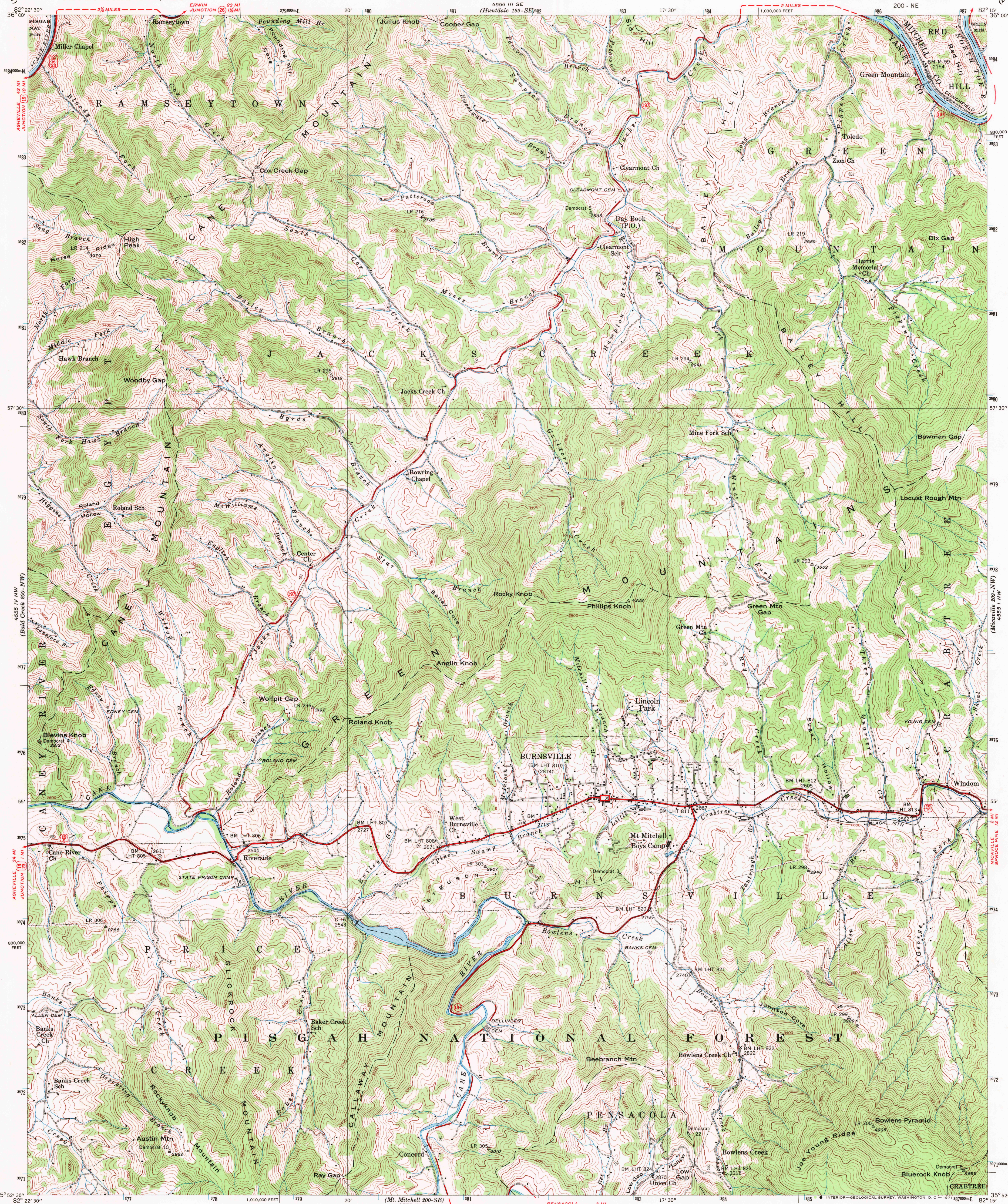


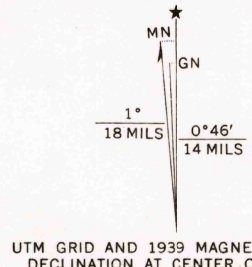
UNITED STATES  
DEPARTMENT OF THE INTERIOR  
GEOLOGICAL SURVEY

UNITED STATES  
TENNESSEE VALLEY AUTHORITY  
MAPS AND SURVEYS DIVISION

NORTH CAROLINA  
BURNSVILLE QUADRANGLE



Control by USC&GS, USGS, and TVA.  
Topography by Fairchild Aerial Surveys, Inc.  
by stereophotogrammetric process.  
Field examination by Tennessee Valley Authority - 1939  
Office inspection and review by the Geological Survey.



SCALE 1:24,000  
1000 0 1000 2000 3000 4000 5000 6000 7000 FEET  
1 0 1 KILOMETER  
Contour interval 40 feet with 20 foot contours shown by broken line.  
Datum is mean sea level

FOR SALE BY U. S. GEOLOGICAL SURVEY, WASHINGTON, D. C. 20242.  
U. S. TENNESSEE VALLEY AUTHORITY, CHATTANOOGA, TENN. 37401 OR KNOXVILLE, TENN. 37902.  
A FOLDER DESCRIBING TOPOGRAPHIC MAPS AND SYMBOLS IS AVAILABLE ON REQUEST

USGS  
Historical File  
Topographic Division

Polyconic projection. 1927 North American datum  
10,000 foot grid based on North Carolina  
rectangular coordinate system  
1000-meter Universal Transverse Mercator grid ticks,  
zone 18, shown in blue  
USGS  
HARD, IMPERVIOUS SURFACES  
OTHER SURFACE IMPROVEMENTS  
U. S. ROUTE  
BURNSVILLE, N. C.  
W3552.5—W8215/7.5  
1939  
AMS 4555 IV NE—SERIES V842

U.S.G.S.  
FILE COPY  
TOPOGRAPHIC DIVISION

MAR 3 1971