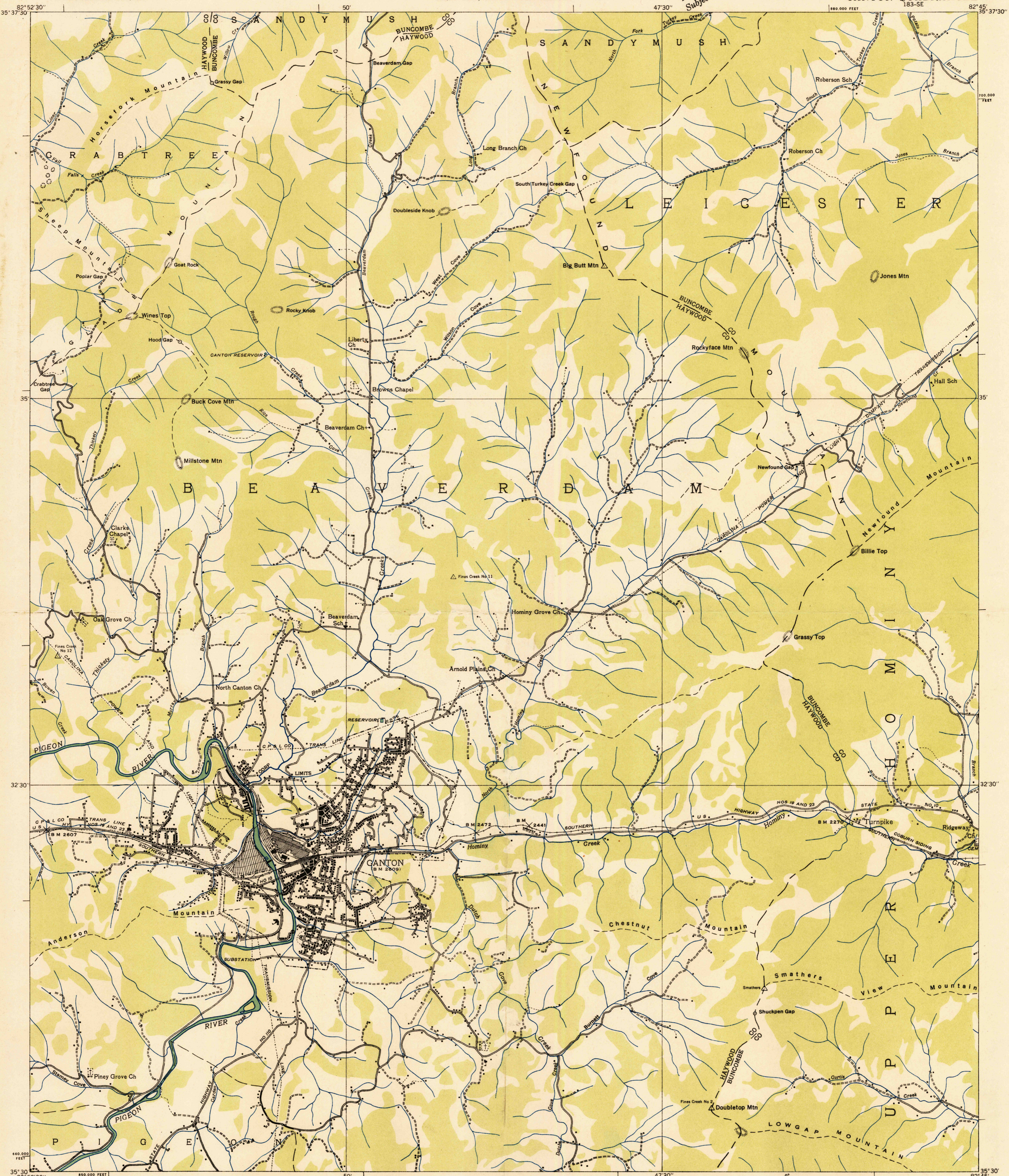
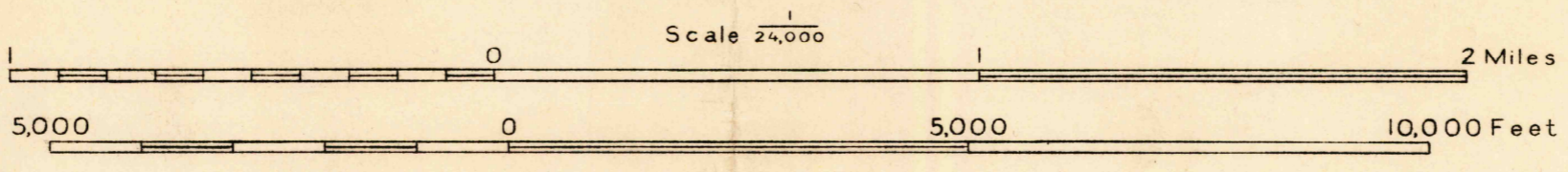


Advance sheet
Subject to correction



Albert Pike, Division Engineer
Compiled by U. S. Geological Survey from aerial photographs
Control by U. S. Geological Survey and U. S. Coast and Geodetic Survey
Field examination in 1935



Polyconic projection. 1927 North American datum
10,000 foot grid based on North Carolina
rectangular coordinate system
Ridge line
Trail
Sinks
APPROXIMATE MEAN DECLINATION, 1986
TRUE NORTH
MAGNETIC NORTH

U.S.G.S. FILE COPY
TOPOGRAPHIC DIVISION
CANTON, N. C.
183-SE
HISTORICAL