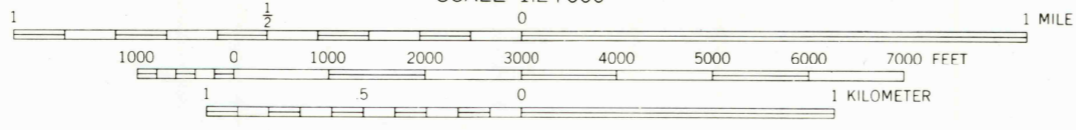
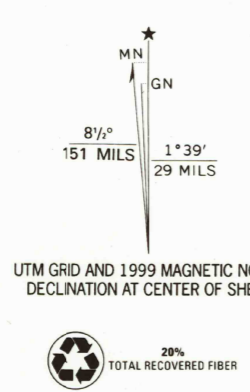




Produced by the United States Geological Survey  
Derived from imagery taken 1969 and other sources. Photoinspected using imagery taken 1997; no major culture or drainage changes observed. Survey control current as of 1970  
Boundaries, other than corporate, revised 1999  
Selected hydrographic data compiled from NOS charts 426 (1970), 835-50 (1971) and 1225 (1969). This information is not intended for navigational purposes  
North American Datum of 1927 (NAD 27). Projection and 10 000-foot ticks: North Carolina coordinate system (Lambert conformal conic)  
1 000-meter Universal Transverse Mercator grid, zone 18  
North American Datum of 1983 (NAD 83) is shown by dashed corner ticks. The values of the shift between NAD 27 and NAD 83 for 7.5-minute intersections are obtainable from National Geodetic Survey NADCON software  
There may be private inholdings within the boundaries of the National or State reservations shown on this map



CONTOUR INTERVAL 5 FEET  
NATIONAL GEODETIC VERTICAL DATUM OF 1929  
TO CONVERT FROM FEET TO METERS, MULTIPLY BY 0.3048  
DEPTH CURVES AND SOUNDINGS IN FEET, DATUM IS MEAN LOWER LOW WATER  
THE RELATIONSHIP BETWEEN THE TWO DATUMS IS VARIABLE  
THE MEAN RANGE OF TIDE IS APPROXIMATELY 3.9 FEET

THIS MAP COMPLIES WITH NATIONAL MAP ACCURACY STANDARDS  
FOR SALE BY U.S. GEOLOGICAL SURVEY, P.O. BOX 25286, DENVER, COLORADO 80225  
A FOLDER DESCRIBING TOPOGRAPHIC MAPS AND SYMBOLS IS AVAILABLE ON REQUEST



- ROAD CLASSIFICATION
- Primary highway, hard surface
  - Secondary highway, hard surface
  - Light-duty road, hard or improved surface
  - Unimproved road
- Interstate Route  
 U. S. Route  
 State Route

CAROLINA BEACH, N. C.

1997

NIMA 5452 III SW—SERIES V842

RECEIVED  
FEB 9 2000  
HISTORICAL MAP ARCHIVES

