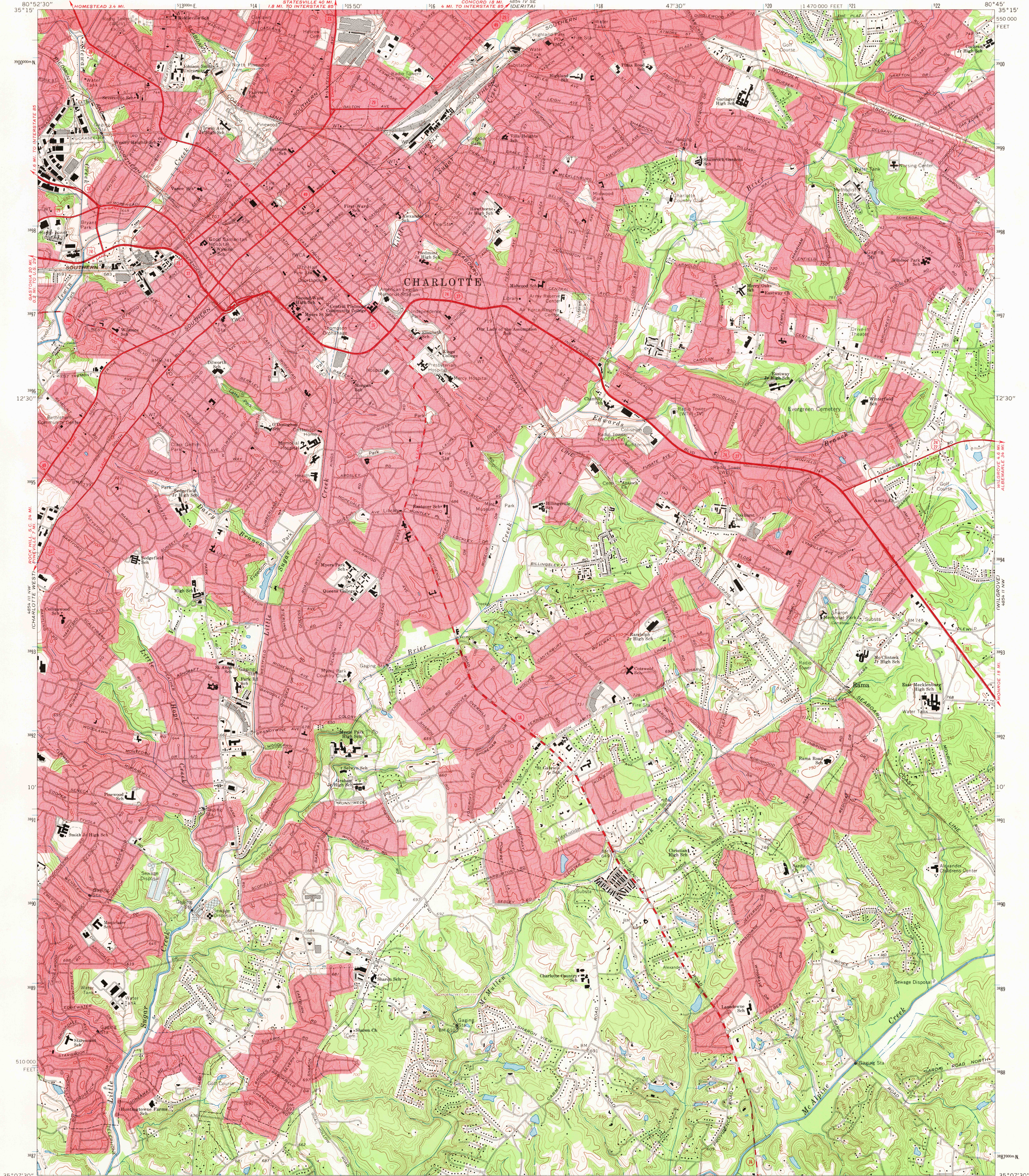
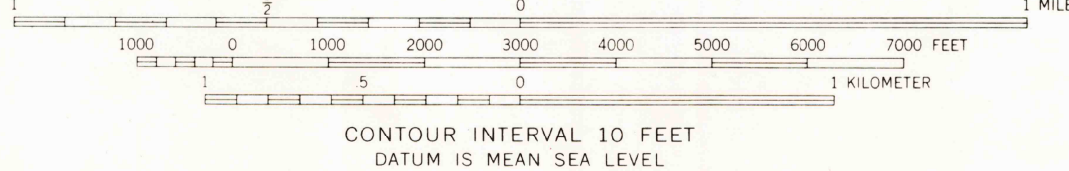
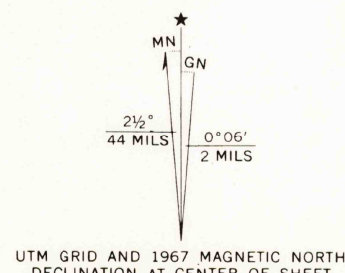


UNITED STATES
DEPARTMENT OF THE INTERIOR
GEOLOGICAL SURVEY

CHARLOTTE EAST QUADRANGLE
NORTH CAROLINA—MECKLINBURG CO.
7.5 MINUTE SERIES (TOPOGRAPHIC)
NE/4 CHARLOTTE 15' QUADRANGLE



Mapped, edited, and published by the Geological Survey
Control by USGS, USC&GS, and North Carolina Geodetic Survey
Topography by photogrammetric methods from aerial
photographs taken 1965. Field checked 1967
Supersedes planimetric map dated 1948
Polyconic projection. 1927 North American datum
10,000-foot grid based on North Carolina coordinate system
1000-meter Universal Transverse Mercator grid ticks, zone 17,
shown in blue
Red tint indicates areas in which only landmark buildings are shown



USGS
Historical File
Topographic Division



HISTORICAL

ROAD CLASSIFICATION
Primary highway, all weather, hard surface
Secondary highway, all weather, hard surface
Light-duty road, all weather, improved surface
Unimproved road, fair or dry weather
U. S. Route
State Route

CHARLOTTE EAST, N. C.
NE/4 CHARLOTTE 15' QUADRANGLE
N3507.5—W8045/7.5

1967

AMS 4854 III NE—SERIES V842

THIS MAP COMPLIES WITH NATIONAL MAP ACCURACY STANDARDS
FOR SALE BY U. S. GEOLOGICAL SURVEY, WASHINGTON, D. C. 20242
A FOLDER DESCRIBING TOPOGRAPHIC MAPS AND SYMBOLS IS AVAILABLE ON REQUEST

U.S.G.S.
FILE COPY
TOPOGRAPHIC DIVISION

JUN 11 1970