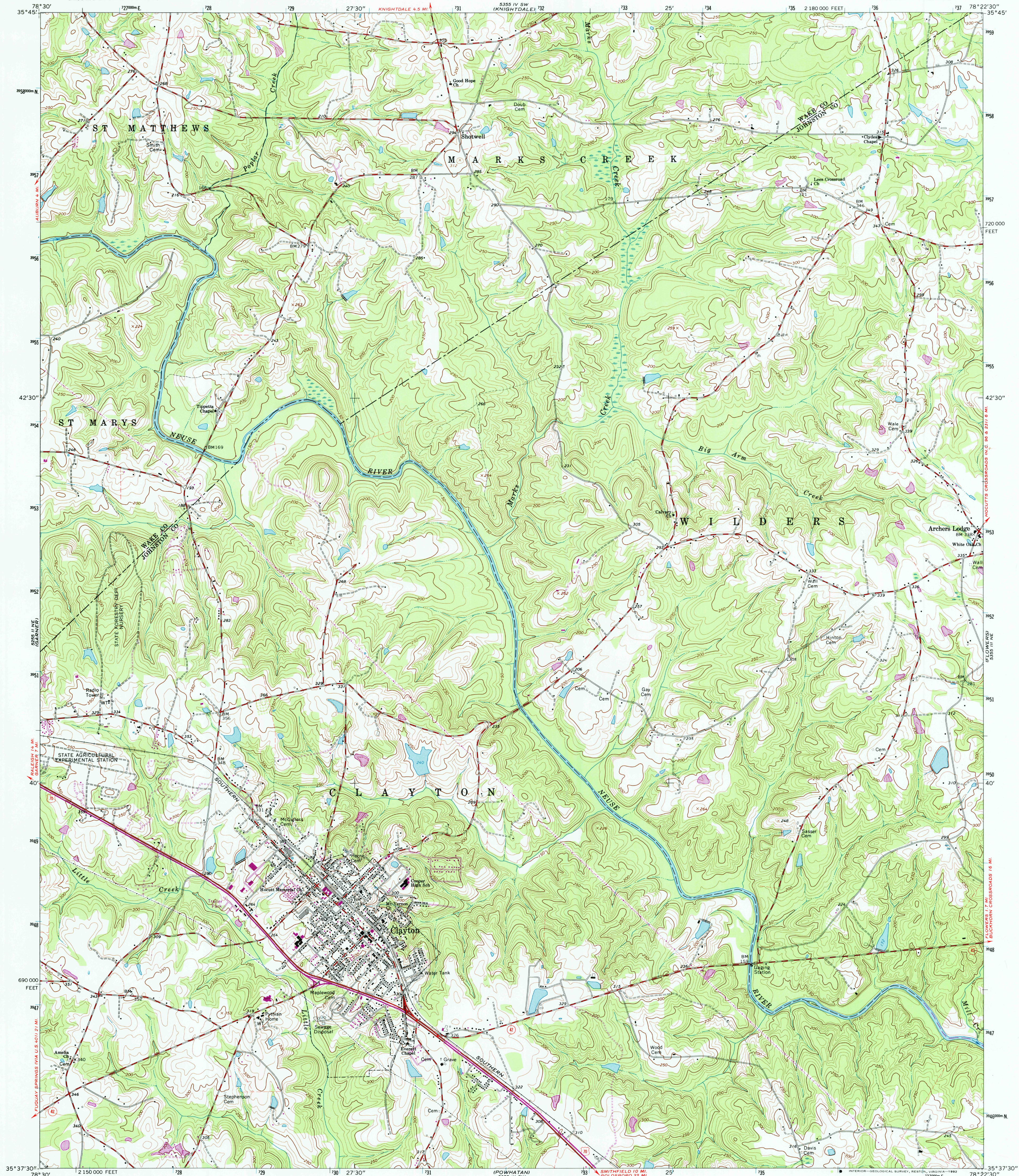
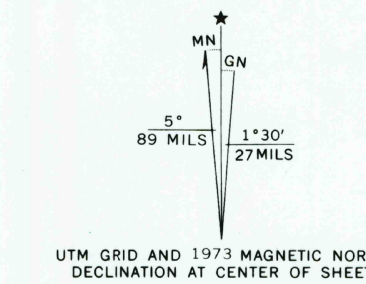


UNITED STATES  
DEPARTMENT OF THE INTERIOR  
GEOLOGICAL SURVEY

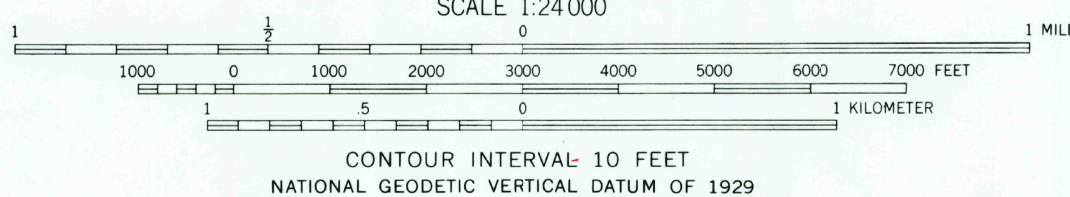
CLAYTON QUADRANGLE  
NORTH CAROLINA  
7.5 MINUTE SERIES (TOPOGRAPHIC)  
NW/4 SELMA 15' QUADRANGLE



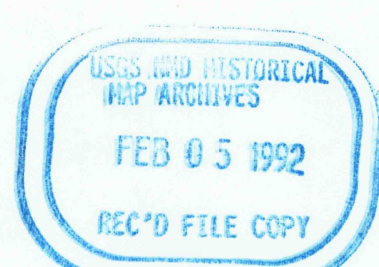
Mapped, edited, and published by the Geological Survey  
Control by USGS, USC&GS, and USCE  
Topography by photogrammetric methods from aerial photographs  
taken 1962. Field checked 1964  
Polyconic projection. 1927 North American datum  
10,000-foot grid based on North Carolina coordinate system  
1000-meter Universal Transverse Mercator grid ticks,  
zone 17, shown in blue  
The difference between 1927 North American Datum and North American  
Datum of 1983 (NAD 83) for 7.5-minute intersections is given in USGS  
Bulletin 1875. The NAD 83 is shown by dashed corner ticks  
Revisions shown in purple compiled from aerial  
photographs taken 1973. This information not  
field checked



Map photorevised 1988  
No major culture or drainage changes observed



THIS MAP COMPLIES WITH NATIONAL MAP ACCURACY STANDARDS  
FOR SALE BY U.S. GEOLOGICAL SURVEY  
DENVER, COLORADO 80225, OR RESTON, VIRGINIA 22092  
A FOLDER DESCRIBING TOPOGRAPHIC MAPS AND SYMBOLS IS AVAILABLE ON REQUEST



ROAD CLASSIFICATION  
Heavy-duty ——— Light-duty ———  
Medium-duty ——— Unimproved dirt ———  
U.S. Route ——— State Route ———

CLAYTON, N. C.  
NW/4 SELMA 15' QUADRANGLE  
35078-E4-TF-024  
PHOTOINSPECTED 1988  
1964  
PHOTOREVISED 1973  
DMA 5355 III NW-SERIES V842