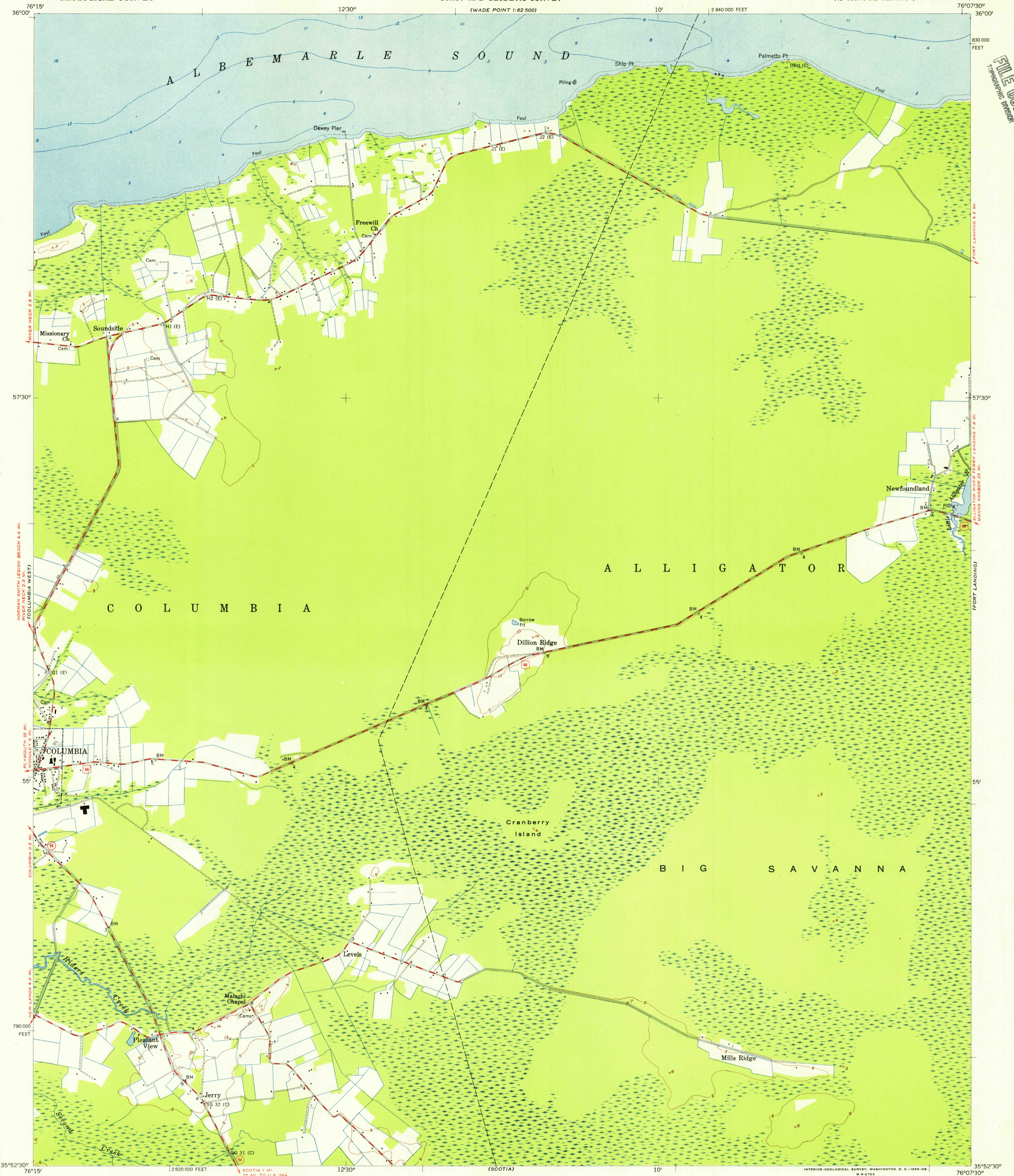


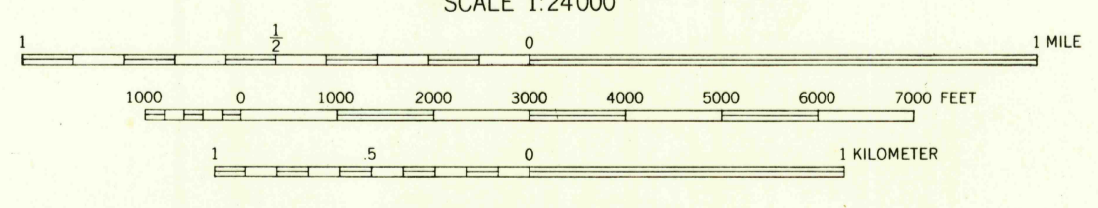
WADE POINT  
1:62,500

U.S.G.S.  
FILE COPY  
TOPOGRAPHIC DIVISION



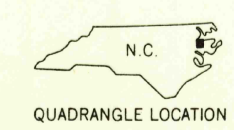
Mapped by U. S. Coast and Geodetic Survey  
Edited and published by the Geological Survey  
Control by USC&GS (C) and USCE (E)  
Culture and drainage in part compiled from aerial photographs  
taken 1949 and 1951. Topography by planetable surveys 1951.  
Field check 1953  
Hydrography from surveys dated 1915 and supplementary information  
Polyconic projection. 1927 North American datum  
10,000-foot grid based on North Carolina coordinate system  
Unchecked elevations are shown in brown

TRUE NORTH  
MAGNETIC NORTH  
APPROXIMATE MEAN  
DECLINATION, 1953



CONTOUR INTERVAL 5 FEET  
DATUM IS MEAN SEA LEVEL  
DEPTH CURVES AND SOUNDINGS IN FEET—DATUM IS MEAN LOW WATER  
SHORELINE SHOWN REPRESENTS THE APPROXIMATE LINE OF MEAN HIGH WATER  
THE MEAN RANGE OF TIDE IS LESS THAN 1/2 FOOT  
THIS MAP COMPLIES WITH NATIONAL MAP ACCURACY STANDARDS  
FOR SALE BY U. S. GEOLOGICAL SURVEY, WASHINGTON 25, D. C.  
A FOLDER DESCRIBING TOPOGRAPHIC MAPS AND SYMBOLS IS AVAILABLE ON REQUEST

USGS  
Historical File  
Topographic Division



ROAD CLASSIFICATION  
Heavy-duty ——— Light-duty ———  
Medium-duty ——— Unimproved dirt ———  
U. S. Route ——— State Route ———

U.S.G.S. HISTORICAL  
FILE COPY  
TOPOGRAPHIC DIVISION  
COLUMBIA EAST, N. C.  
N 3552.5—W 7607.5/7.5  
1953