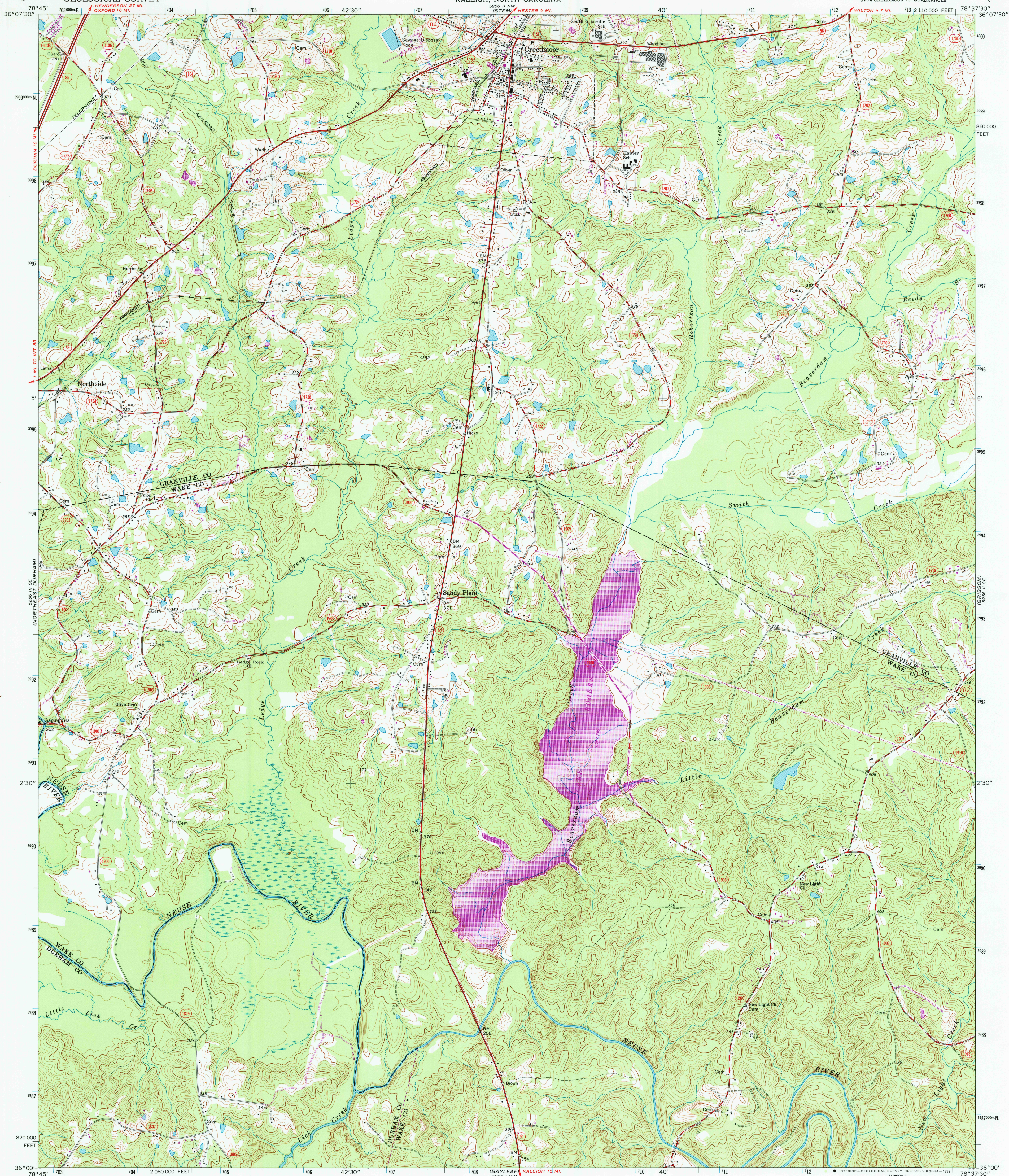


UNITED STATES
DEPARTMENT OF THE INTERIOR
GEOLOGICAL SURVEY

STATE OF NORTH CAROLINA
DEPARTMENT OF NATURAL AND ECONOMIC RESOURCES
RALEIGH, NORTH CAROLINA

CREEDMOOR QUADRANGLE
NORTH CAROLINA
7.5 MINUTE SERIES (TOPOGRAPHIC)
SW/4 CREEDMOOR 15' QUADRANGLE



Mapped, edited, and published by the Geological Survey

Control by USGS, NOS/NOAA, USCE, and North Carolina Geodetic Survey

Topography by photogrammetric methods from aerial photographs

taken 1974. Field checked 1974

Projection and 10,000-foot grid ticks: North Carolina coordinate

system (Lambert conformal conic). 1000-meter Universal

Transverse Mercator grid ticks, zone 17, shown in blue. 1927

North American Datum.

The difference between 1927 North American Datum and North

American Datum of 1983 (NAD 83) for 7.5-minute intersections

is given in USGS Bulletin 1875. The NAD 83 is shown by

dashed corner ticks

Revisions shown in purple and woodland compiled in cooperation

with North Carolina agencies from aerial photographs taken

1980 and other sources. This information not field checked

Map edited 1981

Map photoinspected 1990
No major culture or drainage changes observed

SCALE 1:24 000

1 1000 2000 3000 4000 5000 6000 7000 FEET

1 0.5 1 1.5 2 2.5 3 3.5 4 4.5 5 5.5 6 6.5 7 KILOMETER

CONTOUR INTERVAL 10 FEET

NATIONAL GEODETIC VERTICAL DATUM OF 1929

THIS MAP COMPLIES WITH NATIONAL MAP ACCURACY STANDARDS

FOR SALE BY U.S. GEOLOGICAL SURVEY

DENVER, COLORADO 80225, OR RESTON, VIRGINIA 22092

A FOLDER DESCRIBING TOPOGRAPHIC MAPS AND SYMBOLS IS AVAILABLE ON REQUEST

ROAD CLASSIFICATION

Primary highway, hard surface

Secondary highway, hard surface

Unimproved road

Interstate Route

U.S. Route

State Route



CREEDMOOR, N. C.

SW/4 CREEDMOOR 15' QUADRANGLE

36078-A6-TF-024

PHOTOINSPECTED 1990

1974

PHOTOREVISED 1981

DMA 5256 II SW-SERIES V842