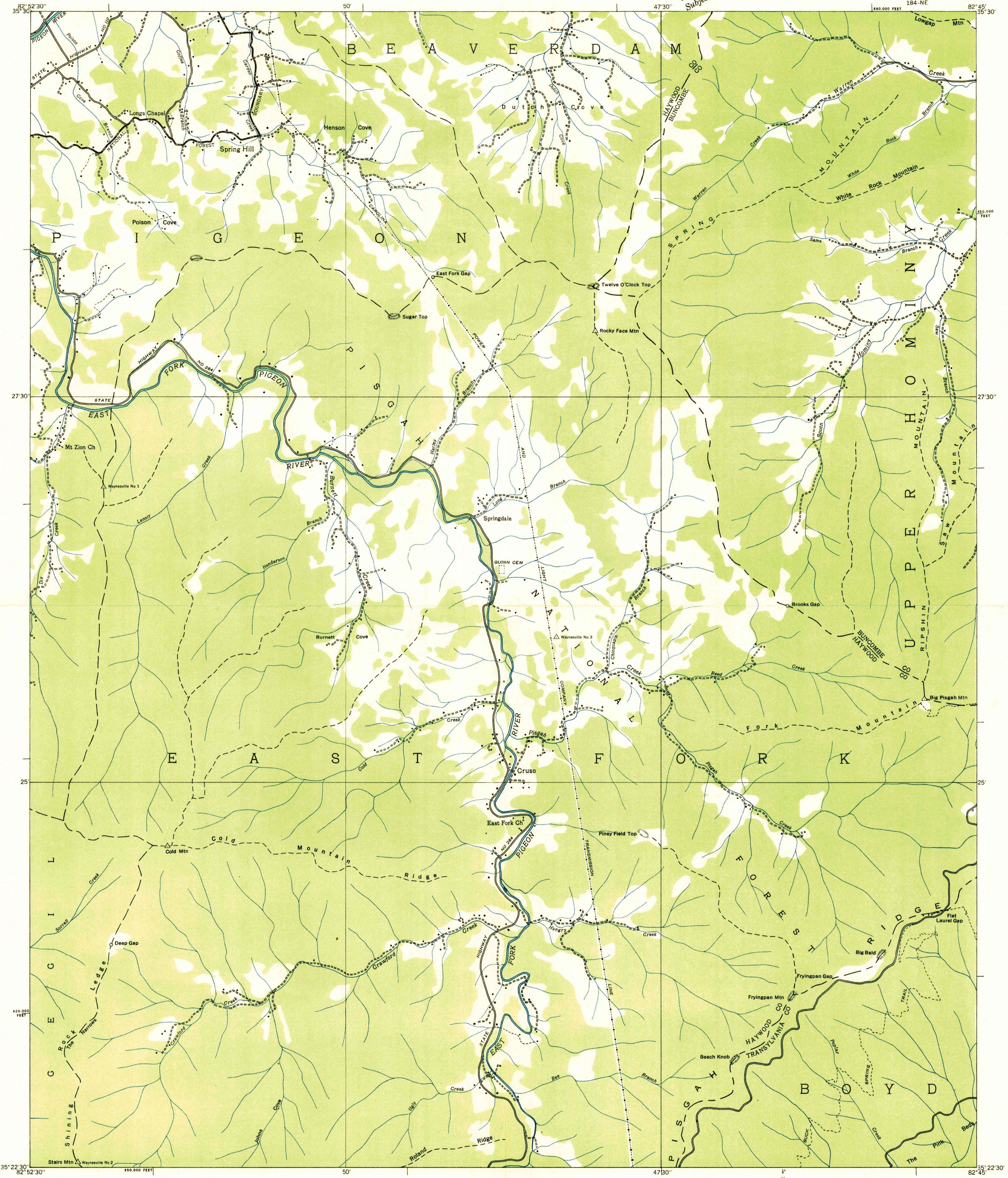
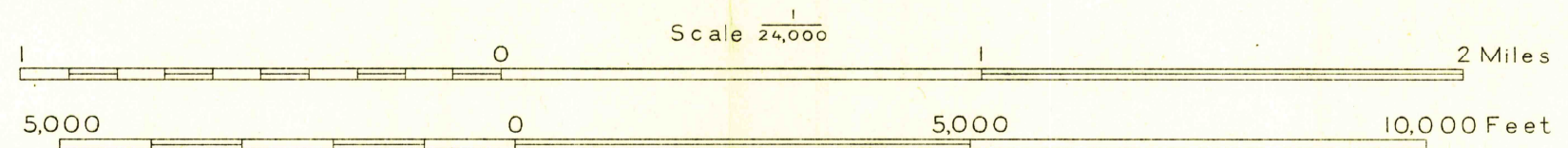


Advance sheet
Subject to correction



Albert Pike, Division Engineer
Compiled by U. S. Geological Survey from aerial photographs
Control by U. S. Geological Survey and U. S. Coast and Geodetic Survey
Field examination in 1935



Polygonic projection. 1927 North American datum
10,000 foot grid based on North Carolina
rectangular coordinate system

U.S.G.S. Historical File
Topographic Division

CRUSO, N. C.
184-NE

U.S.G.S. TOPOGRAPHIC DIVISION