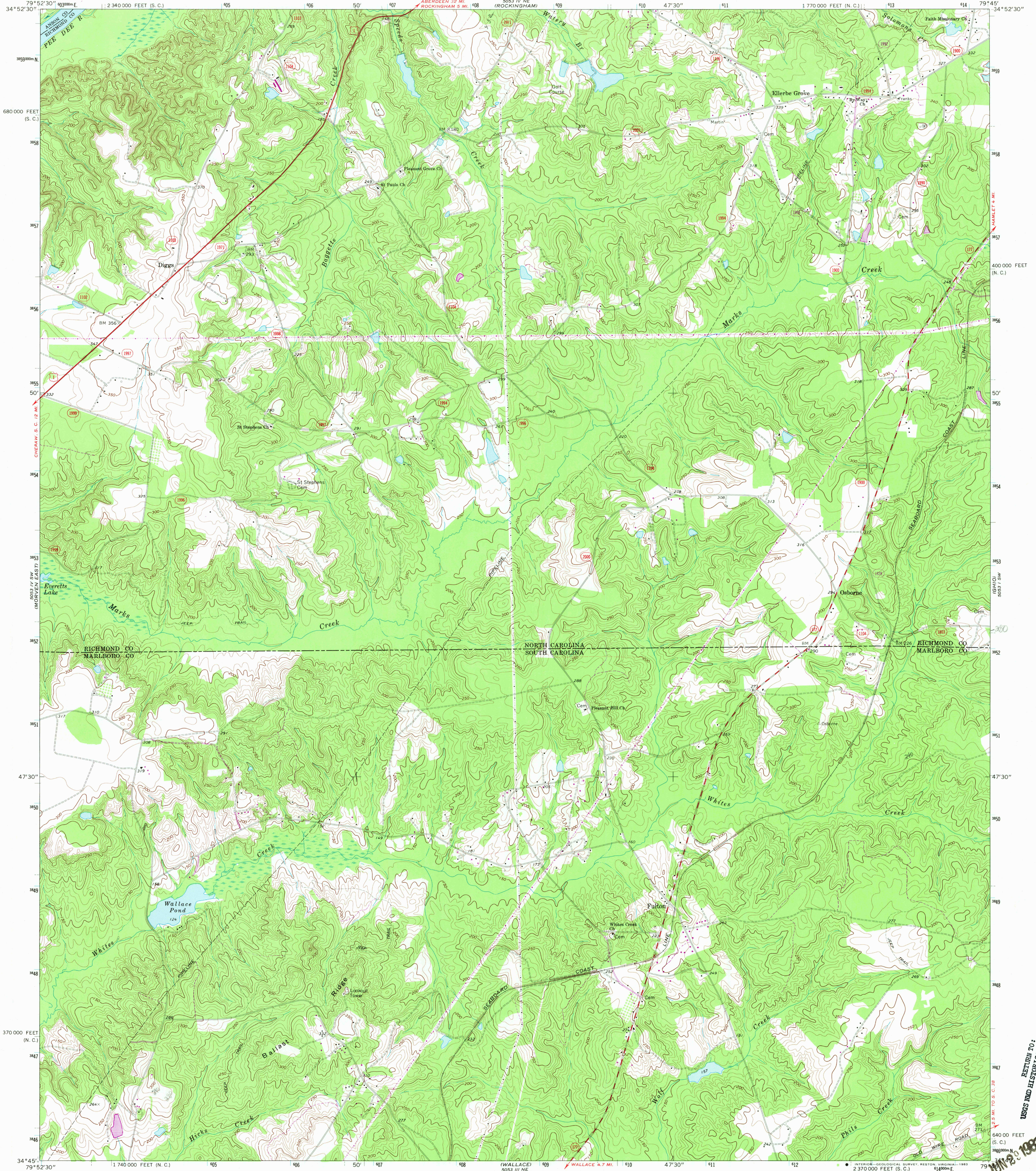
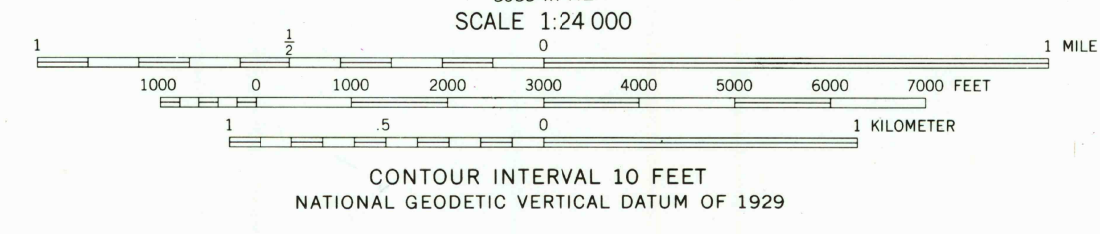
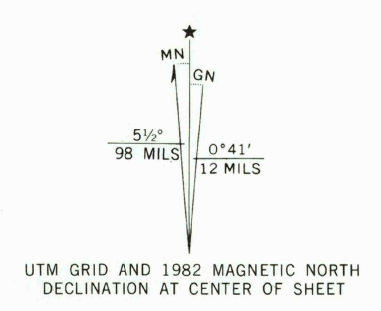


UNITED STATES
DEPARTMENT OF THE INTERIOR
GEOLOGICAL SURVEY

DIGGS QUADRANGLE
NORTH CAROLINA-SOUTH CAROLINA
7.5 MINUTE SERIES (TOPOGRAPHIC)



Mapped, edited, and published by the Geological Survey
Control by USGS and NOS/NOAA
Topography by photogrammetric methods from aerial photographs taken 1969. Field checked 1971
Projection: North Carolina coordinate system (Lambert conformal conic). 10,000-foot grid ticks based on North Carolina coordinate system, and South Carolina coordinate system, north zone 1000-meter Universal Transverse Mercator grid ticks, zone 17, shown in blue. 1927 North American Datum. To place on the predicted North American Datum 1983 move the projection lines 12 meters south and 20 meters west as shown by dashed corner ticks
Fine red dashed lines indicate selected fence and field lines where generally visible on aerial photographs. This information is unchecked



ROAD CLASSIFICATION

Primary highway, hard surface	Light-duty road, hard or improved surface
Secondary highway, hard surface	Unimproved road
Interstate Route	U. S. Route
	State Route

THIS MAP COMPLIES WITH NATIONAL MAP ACCURACY STANDARDS FOR SALE BY U. S. GEOLOGICAL SURVEY, RESTON, VIRGINIA 22092
A FOLDER DESCRIBING TOPOGRAPHIC MAPS AND SYMBOLS IS AVAILABLE ON REQUEST

Revisions shown in purple and woodland compiled in cooperation with North Carolina agencies from aerial photographs taken 1981 and other sources. This information not field checked
Map edited 1982

DIGGS, N. C. - S. C.
N3445-W7945/7.5
1971
PHOTOREVISED 1982
DMA 5053 IV SE - SERIES V842

RETURN TO:
USGS AND HISTORICAL MAP ARCHIVES
JUL 22 1983