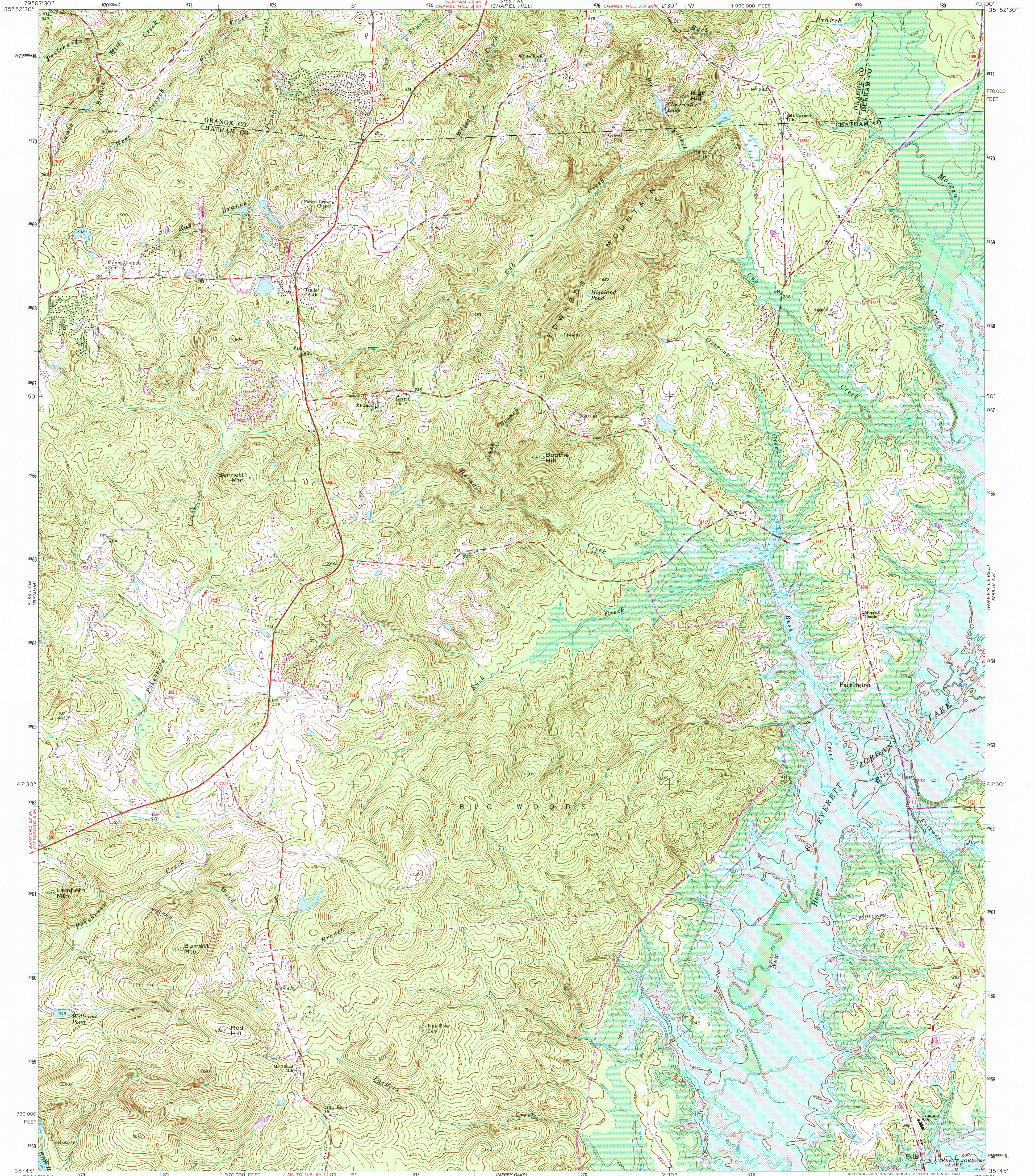


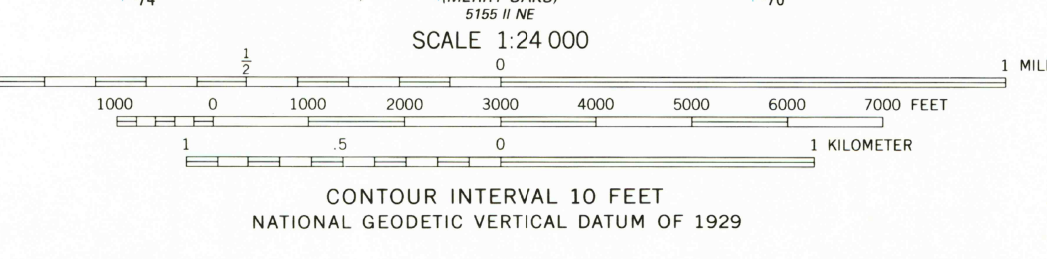
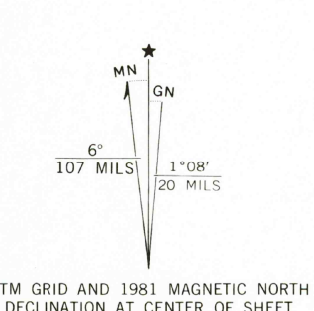
UNITED STATES
DEPARTMENT OF THE INTERIOR
GEOLOGICAL SURVEY

FARRINGTON QUADRANGLE
NORTH CAROLINA
7.5 MINUTE SERIES (TOPOGRAPHIC)



Mapped, edited, and published by the Geological Survey
Control by USGS, NOS/NOAA, USCE, and North Carolina Geodetic Survey
Planimetry by photogrammetric methods from aerial photographs taken 1938. Topography by planimeter surveys 1951. Revised from aerial photographs taken 1973. Field checked 1974
Polyconic projection. 10,000-foot grid ticks based on North Carolina coordinate system (Lambert conformal conic). 1000-meter Universal Transverse Mercator grid ticks, zone 17, shown in blue 1927 North American Datum. To place on the predicted North American Datum 1983, move the projection lines 11 meters south and 22 meters west as shown by dashed corner ticks
Blue hatching indicates areas to be submerged by B. Everett Jordan Lake to 216 feet
Areas covered by dashed light-blue pattern are subject to controlled inundation

Revisions shown in purple and woodland compiled in cooperation with State of North Carolina agencies from aerial photographs taken 1980 and other sources. This information not field checked. Map edited 1981



THIS MAP COMPLIES WITH NATIONAL MAP ACCURACY STANDARDS
FOR SALE BY U.S. GEOLOGICAL SURVEY
DENVER, COLORADO 80225, OR RESTON, VIRGINIA 22092
A FOLDER DESCRIBING TOPOGRAPHIC MAPS AND SYMBOLS IS AVAILABLE ON REQUEST



ROAD CLASSIFICATION	
Primary highway, hard surface	Light-duty road, hard or improved surface
Secondary highway, hard surface	Unimproved road
Interstate Route	U. S. Route
	State Route

USGS AND HISTORICAL NHP ARCHIVES
SEP 26 1996
REC'D FILE COPY

FARRINGTON, N. C.
N3545-W7900/7.5
1978
PHOTOREVISED 1981
DMA 5155 I SE-SERIES V842

