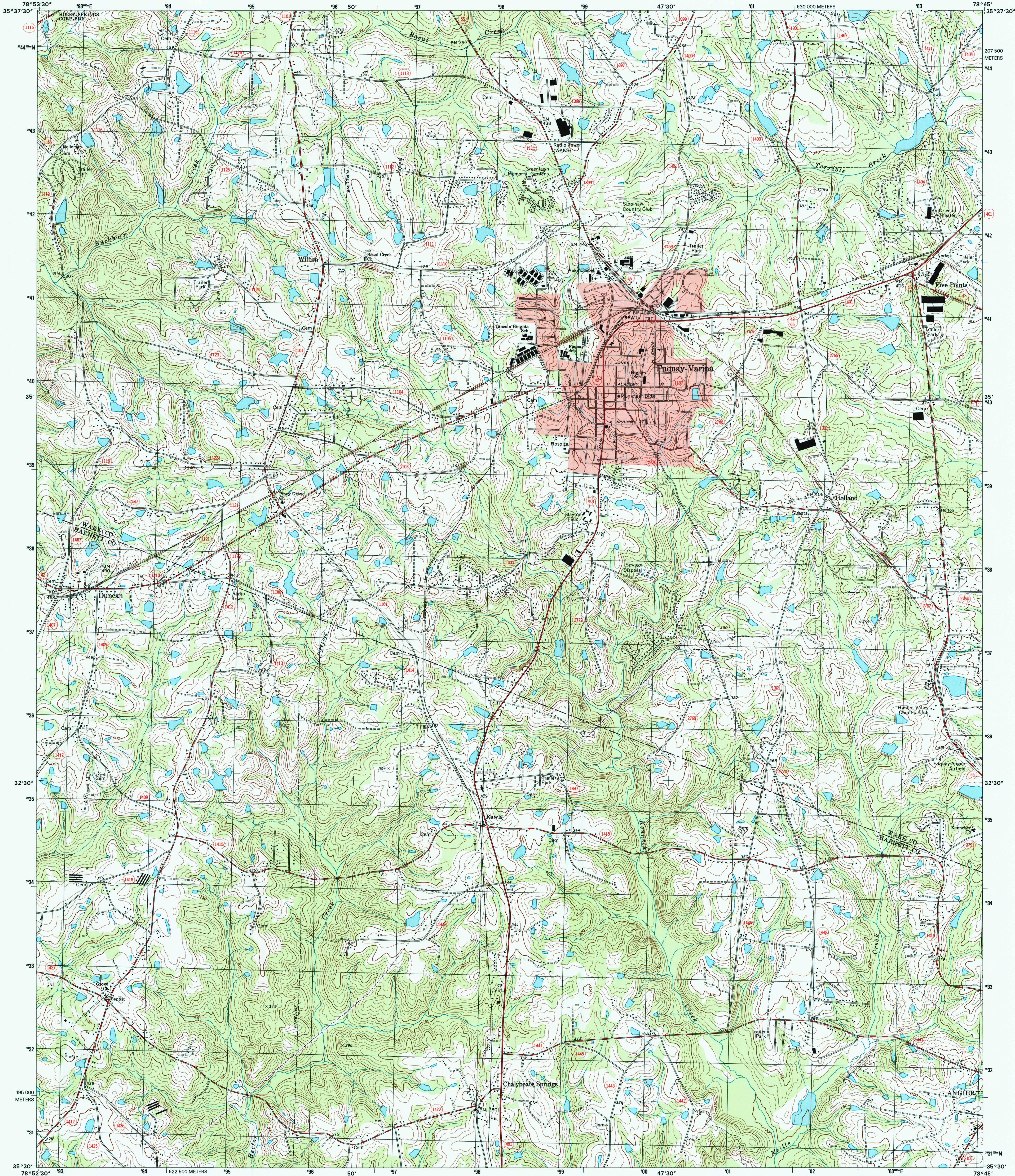




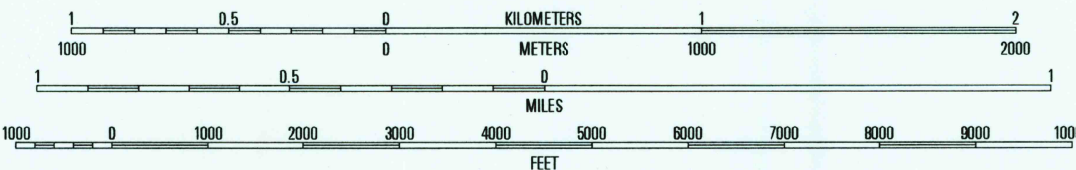
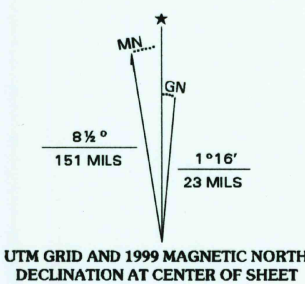
U.S. DEPARTMENT OF THE INTERIOR
U.S. GEOLOGICAL SURVEY

STATE OF NORTH CAROLINA
DEPARTMENT OF ENVIRONMENT AND NATURAL RESOURCES
DIVISION OF LAND RESOURCES
NORTH CAROLINA GEOLOGICAL SURVEY

FUQUAY-VARINA QUADRANGLE
NORTH CAROLINA
7.5-MINUTE SERIES (TOPOGRAPHIC)



Produced by the United States Geological Survey
in cooperation with North Carolina Department
of Environment and Natural Resources
Topography compiled 1973. Planimetry derived from imagery
taken 1993 and other sources. Survey control current as of 1974
North American Datum of 1983 (NAD 83). Projection and
1 000-meter grid: Universal Transverse Mercator, zone 17
2 500-meter ticks: North Carolina Coordinate System of 1983
North American Datum of 1927 (NAD 27) is shown by dashed
corner ticks. The values of the shift between NAD 83 and
NAD 27 for 7.5-minute intersections are obtainable from
National Geodetic Survey NADCON software
Landmark buildings verified 1974



CONTOUR INTERVAL 10 FEET
NATIONAL GEODETIC VERTICAL DATUM OF 1929
TO CONVERT FROM FEET TO METERS, MULTIPLY BY 0.3048

THIS MAP COMPLIES WITH NATIONAL MAP ACCURACY STANDARDS
FOR SALE BY U.S. GEOLOGICAL SURVEY, P.O. BOX 25286, DENVER, COLORADO 80225
A FOLDER DESCRIBING TOPOGRAPHIC MAPS AND SYMBOLS IS AVAILABLE ON REQUEST



ROAD CLASSIFICATION	
Primary highway hard surface	Light-duty road, hard or improved surface
Secondary highway hard surface	Unimproved road
Interstate Route	U.S. Route
	State Route

1	2	3
4	5	6
7	8	9

FUQUAY-VARINA, NC
1993

NIMA 5255 III SE-SERIES V842

