

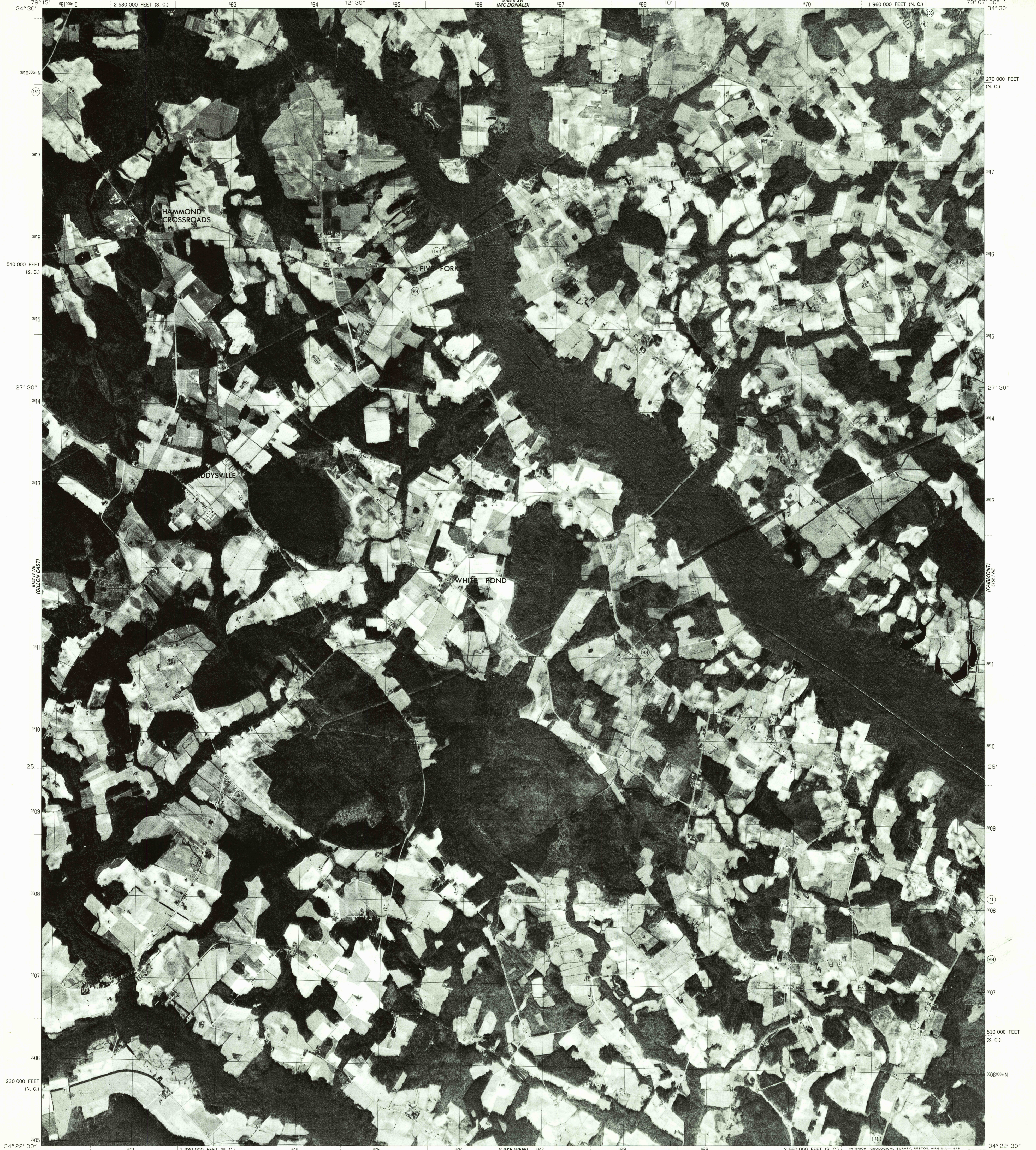
5152 1 NW
DILLON

UNITED STATES
DEPARTMENT OF THE INTERIOR
GEOLOGICAL SURVEY

STATE OF NORTH CAROLINA
DEPARTMENT OF NATURAL AND ECONOMIC RESOURCES
RALEIGH, NORTH CAROLINA

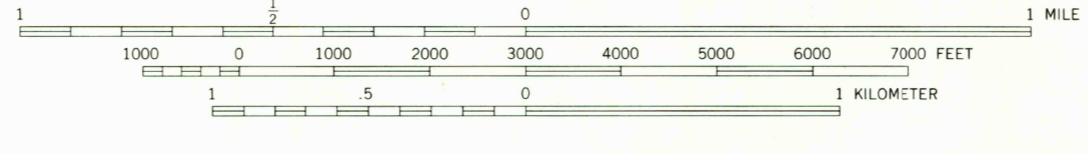
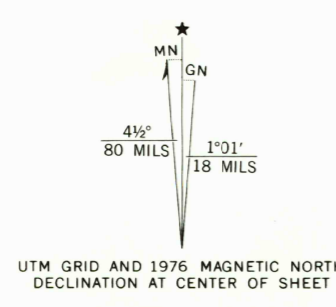
GADDYSVILLE QUADRANGLE
NORTH CAROLINA—SOUTH CAROLINA
7.5 MINUTE SERIES ORTHOPHOTOQUAD

5152 1 SE
SOUTHWEST
LUMBERTON



Produced and published by the Geological Survey

Orthophoto prepared from 1:80,000-scale aerial photograph taken January 15, 1976
Projection: North Carolina coordinate system, (Lambert conformal conic)
10,000-foot grid ticks based on North Carolina coordinate system, and South Carolina coordinate system north zone 1000-meter Universal Transverse Mercator grid, zone 17. 1927 North American datum
Photomagey rectified by optical scanning which may produce double or mismatched images; use the mean of image positions for map point



PRINCIPAL NUMBERED HIGHWAYS
○ Interstate Route □ U. S. Route ○ State Route

This quadrangle area also covered by 1:24,000-scale topographic map
OCT 19 1978
GADDYSVILLE, N. C.—S. C.
N3422.5—W7907.5/7.5
1976
AMS 5152 1 NW—SERIES V042

THIS MAP COMPLIES WITH NATIONAL MAP ACCURACY STANDARDS FOR SALE BY U. S. GEOLOGICAL SURVEY, RESTON, VIRGINIA 22092

USGS
Historical File
Topographic Division