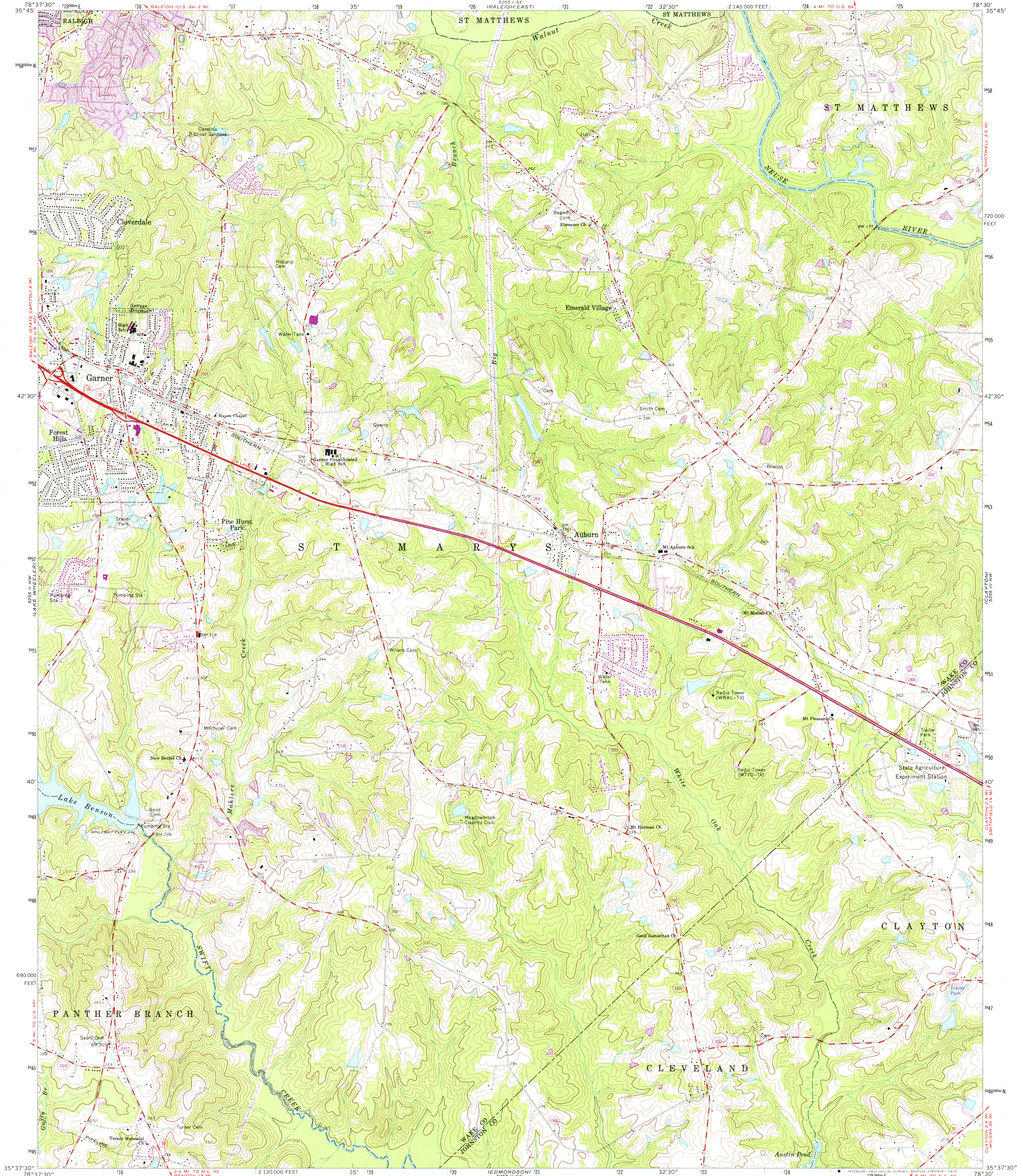


UNITED STATES
DEPARTMENT OF THE INTERIOR
GEOLOGICAL SURVEY

GARNER QUADRANGLE
NORTH CAROLINA
7.5 MINUTE SERIES (TOPOGRAPHIC)
NE/4 GARNER 15' QUADRANGLE



Mapped, edited, and published by the Geological Survey

Control by USGS and USC&GS

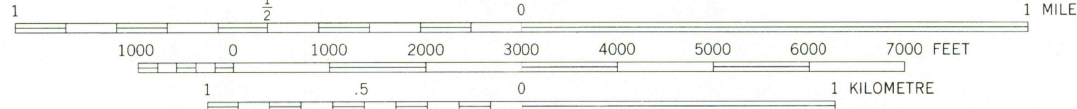
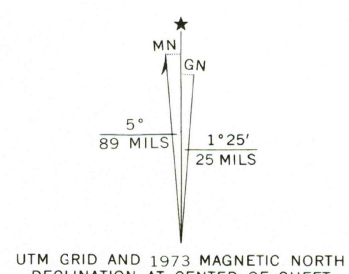
Topography by photogrammetric methods from aerial photographs taken 1962. Field checked 1964

Polyconic projection. 1927 North American datum
10,000-foot grid based on North Carolina coordinate system
1000-metre Universal Transverse Mercator grid ticks,
zone 17, shown in blue

Fine red dashed lines indicate selected fence and field lines where generally visible on aerial photographs. This information is unchecked

Revisions shown in purple compiled from aerial photographs taken 1973. This information not field checked

Purple tint indicates extension of urban areas



CONTOUR INTERVAL 10 FEET
NATIONAL GEODETIC VERTICAL DATUM OF 1929

THIS MAP COMPLIES WITH NATIONAL MAP ACCURACY STANDARDS
FOR SALE BY U. S. GEOLOGICAL SURVEY, RESTON, VIRGINIA 22092
A FOLDER DESCRIBING TOPOGRAPHIC MAPS AND SYMBOLS IS AVAILABLE ON REQUEST

ROAD CLASSIFICATION	
Heavy-duty	Light-duty
Medium-duty	Unimproved dirt
U. S. Route	State Route



USGS
HISTORICAL FILE
TOPOGRAPHIC DIVISION

GARNER, N. C.
NE/4 GARNER 15' QUADRANGLE
N3537.5—W7830/7.5

1964
PHOTOREVISED 1973
AMS 5255 II NE-SERIES V842

FEB 0 5 1976