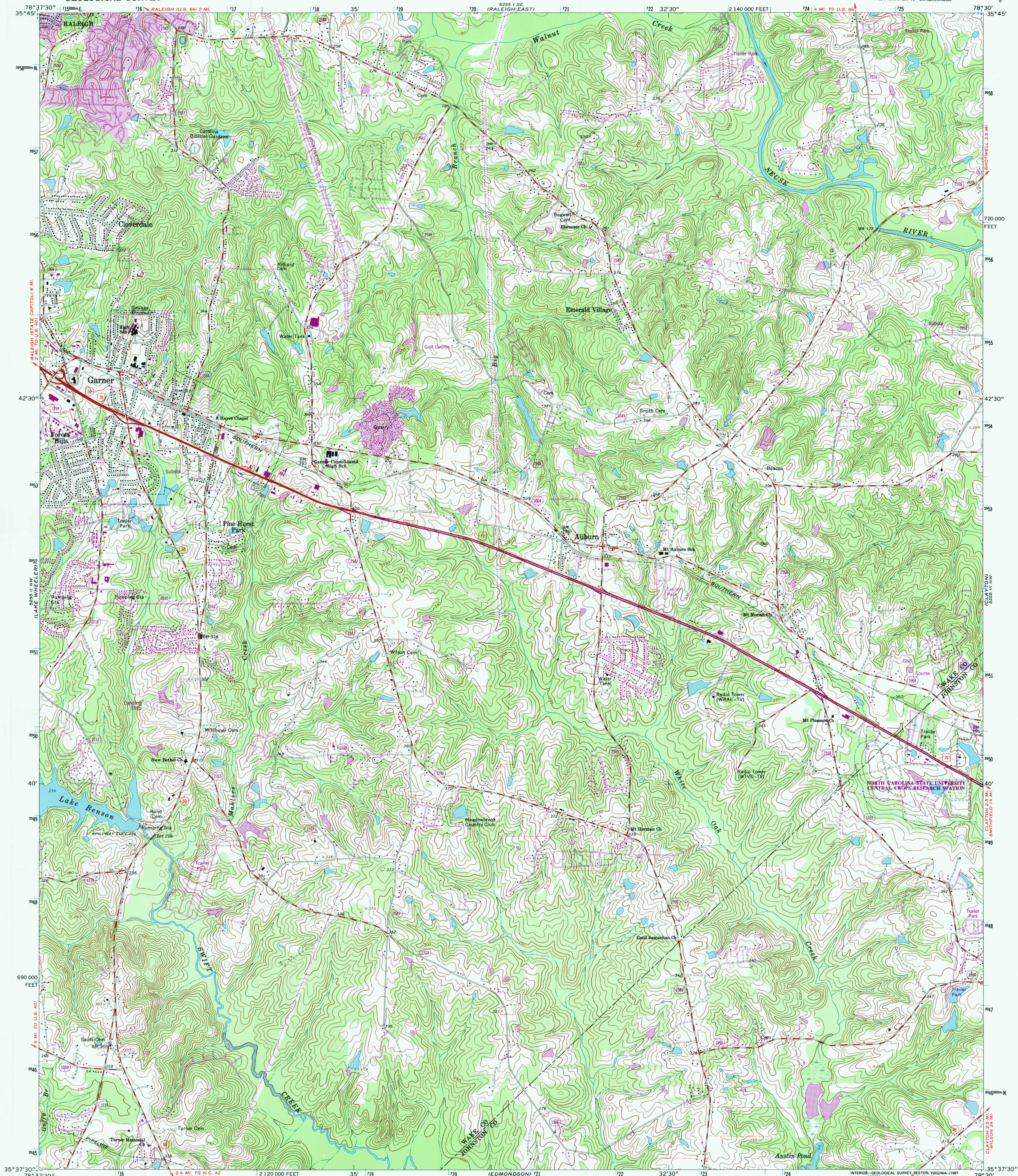


UNITED STATES
DEPARTMENT OF THE INTERIOR
GEOLOGICAL SURVEY

GARNER QUADRANGLE
NORTH CAROLINA
7.5 MINUTE SERIES (TOPOGRAPHIC)
NE 1/4 GARNER 15' QUADRANGLE



Mapped, edited, and published by the Geological Survey

Control by USGS and USC&GS

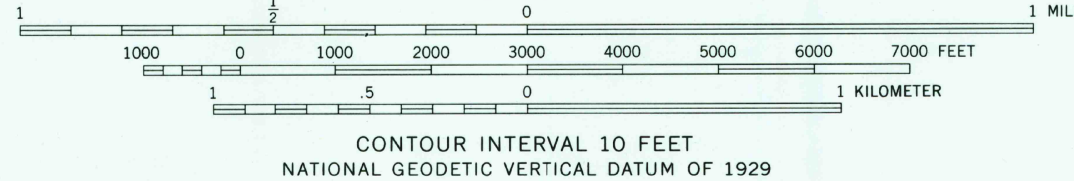
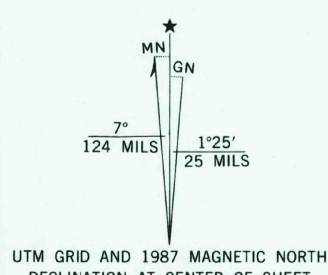
Topography by photogrammetric methods from aerial photographs taken 1962. Field checked 1964

Polyconic projection. 1927 North American datum 10,000-foot grid based on North Carolina coordinate system 1000-meter Universal Transverse Mercator grid ticks, zone 17, shown in blue

To place on the predicted North American Datum 1983 move the projection lines 12 meters south and 23 meters west as shown by dashed corner ticks

Fine red dashed lines indicate selected fence and field lines where generally visible on aerial photographs. This information is unchecked

There may be private inholdings within the boundaries of the National or State reservations shown on this map



THIS MAP COMPLIES WITH NATIONAL MAP ACCURACY STANDARDS
FOR SALE BY U.S. GEOLOGICAL SURVEY
DENVER, COLORADO 80225 OR RESTON, VIRGINIA 22092
A FOLDER DESCRIBING TOPOGRAPHIC MAPS AND SYMBOLS IS AVAILABLE ON REQUEST



ROAD CLASSIFICATION	
Heavy-duty	Light-duty
Medium-duty	Unimproved dirt
U.S. Route	State Route

GARNER, N.C.
NE 1/4 GARNER 15' QUADRANGLE
35078-F5-TF-024

1964
PHOTOREVISED 1987
DMA 5255 II NE-SERIES V842

Revisions shown in purple and woodland compiled in cooperation with North Carolina agencies from aerial photographs taken 1984 and other sources. This information not field checked Map edited 1987

