

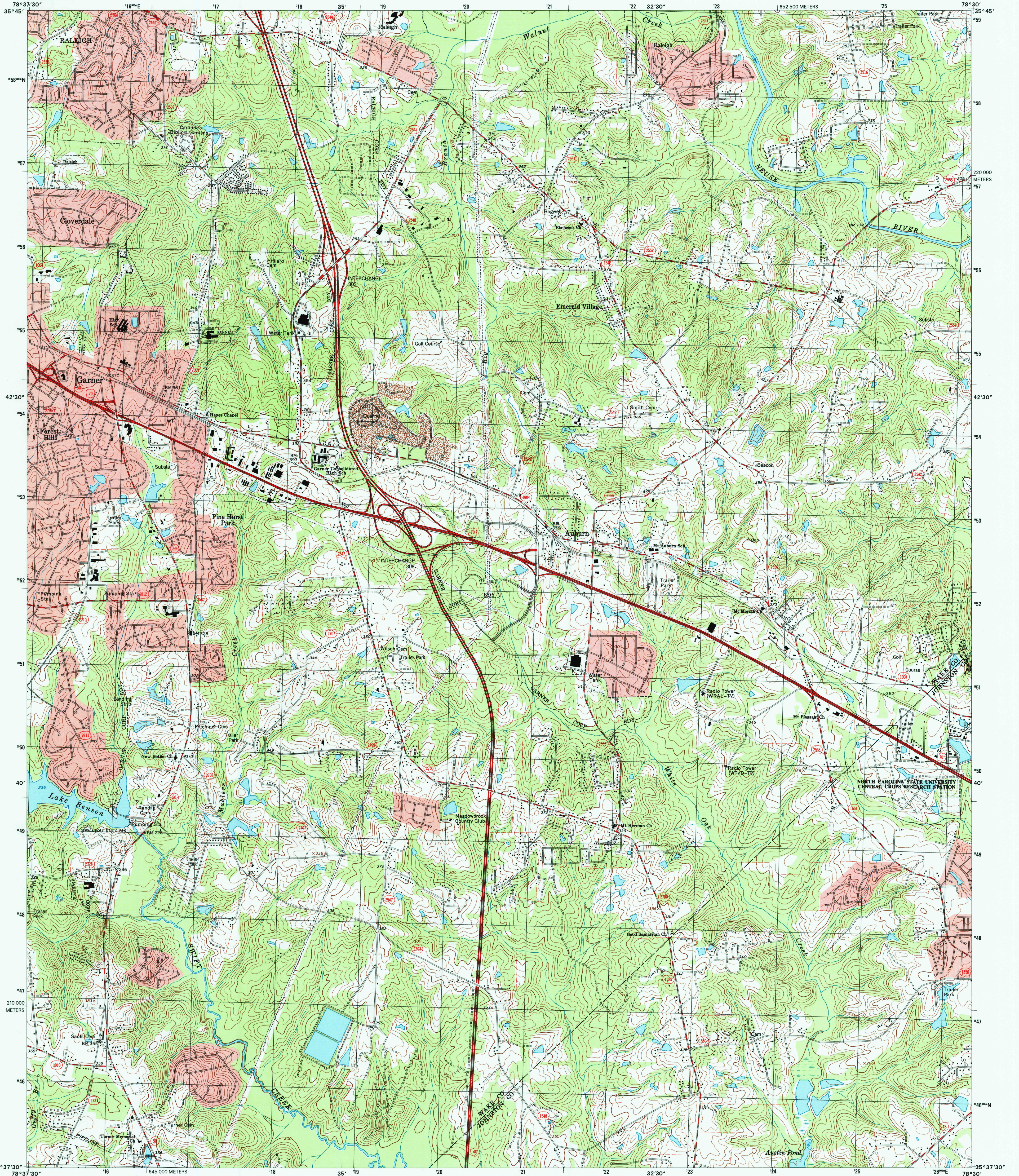


U.S. DEPARTMENT OF THE INTERIOR  
U.S. GEOLOGICAL SURVEY

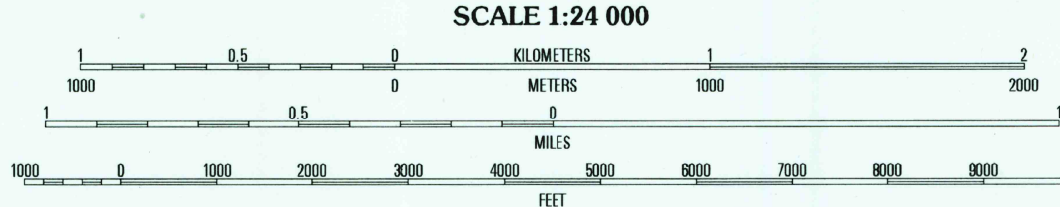
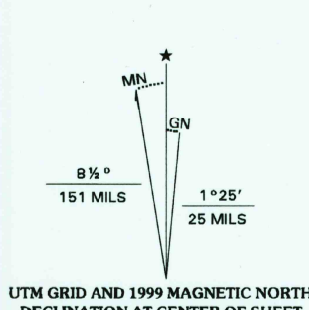


STATE OF NORTH CAROLINA  
DEPARTMENT OF ENVIRONMENT AND NATURAL RESOURCES  
DIVISION OF LAND RESOURCES  
NORTH CAROLINA GEOLOGICAL SURVEY

GARNER QUADRANGLE  
NORTH CAROLINA  
7.5-MINUTE SERIES (TOPOGRAPHIC)



Produced by the United States Geological Survey  
in cooperation with North Carolina Department  
of Environment and Natural Resources  
Topography compiled 1962. Planimetry derived from imagery  
taken 1993 and other sources. Survey control current as of 1964  
North American Datum of 1983 (NAD 83). Projection and  
1 000-meter grid: Universal Transverse Mercator, zone 17  
2 500-meter ticks: North Carolina Coordinate System of 1983  
North American Datum of 1927 (NAD 27) is shown by dashed  
corner ticks. The values of the shift between NAD 83 and  
NAD 27 for 7.5-minute intersections are obtainable from  
National Geodetic Survey NADCON software  
There may be private inholdings within the boundaries of the  
National or State reservations shown on this map  
Landmark buildings verified 1964



CONTOUR INTERVAL 10 FEET  
NATIONAL GEODETIC VERTICAL DATUM OF 1929  
TO CONVERT FROM FEET TO METERS, MULTIPLY BY 0.3048



ROAD CLASSIFICATION  
Primary highway .....  
Light-duty road, hard or improved surface .....  
Secondary highway .....  
Unimproved road .....  
Interstate Route .....  
U.S. Route .....  
State Route .....

1	2	3	1 Raleigh West
4	5	6	2 Raleigh East
7	8	9	3 Knightdale
			4 Lake Wheeler
			5 Clayton
			6 Angier
			7 Edmondson
			8 Powhatan

GARNER, NC  
1993

NIMA 5255 II NE-SERIES V842

