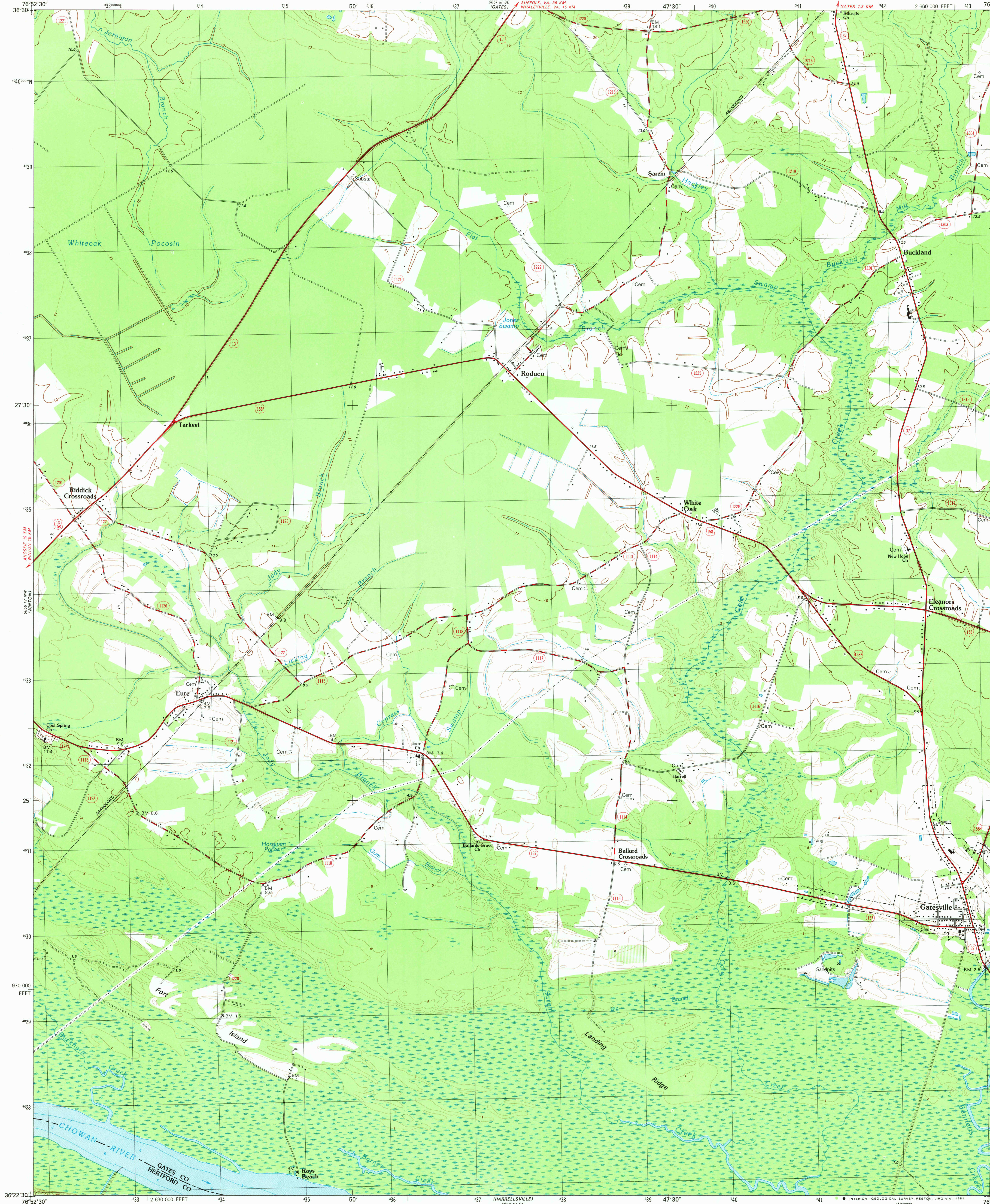


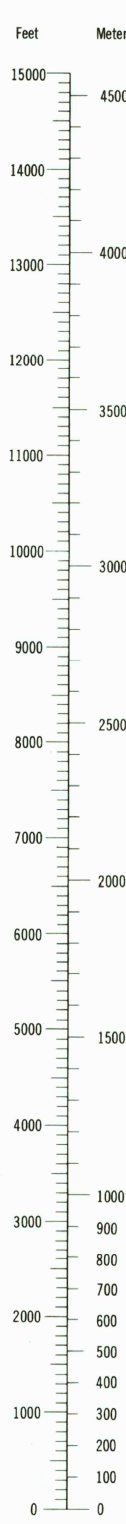
UNITED STATES
DEPARTMENT OF THE INTERIOR
GEOLOGICAL SURVEY

STATE OF NORTH CAROLINA
DEPARTMENT OF NATURAL RESOURCES
AND COMMUNITY DEVELOPMENT
RALEIGH, NORTH CAROLINA

GATESVILLE QUADRANGLE
NORTH CAROLINA
7.5 MINUTE SERIES (TOPOGRAPHIC)
NE 1/4 WINTON 15' QUADRANGLE



CONVERSION
SCALES

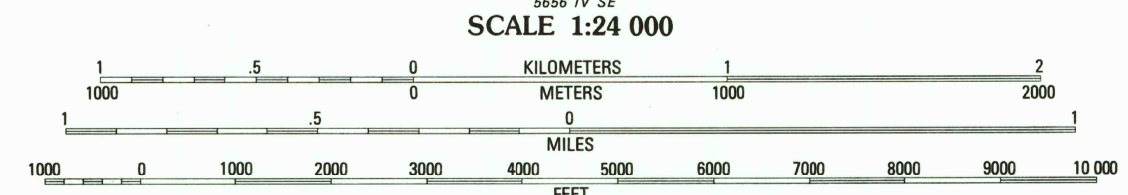
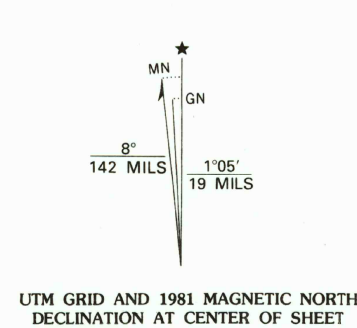


Feet	Meters
1	3048
2	6096
3	9144
4	12192
5	15240
6	18288
7	21336
8	24384
9	27432
10	30480

To convert feet to meters
multiply by 3.048

To convert meters to feet
multiply by 3.2808

Mapped, edited, and published by the Geological Survey
Control by USGS, NOS/NOAA, and North Carolina Geodetic Survey
Topography by photogrammetric methods from aerial photographs
taken 1975. Field checked 1977. Map edited 1981.
Selected hydrographic data compiled from NOS chart 12205 (1981)
This information is not intended for navigational purposes
Projection and 10,000-foot grid ticks: North Carolina coordinate
system, (Lambert conformal conic)
1000-meter Universal Transverse Mercator grid, zone 18
1927 North American Datum
To place on the predicted North American Datum 1983
move the projection lines 12 meters south and
29 meters west as shown by dashed corner ticks



CONTOUR INTERVAL 2 METERS
SUPPLEMENTARY CONTOUR INTERVAL 1 METER
DASHED SUPPLEMENTARY CONTOURS ARE APPROXIMATE
NATIONAL GEODETIC VERTICAL DATUM OF 1929
CONTROL ELEVATIONS SHOWN TO THE NEAREST 0.1 METER
OTHER ELEVATIONS SHOWN TO THE NEAREST 0.5 METER
DEPTH CURVES AND SOUNDINGS IN METERS—DATUM IS MEAN LOW WATER
THE RELATIONSHIP BETWEEN THE TWO DATUMS IS VARIABLE
SHORELINE SHOWN REPRESENTS THE APPROXIMATE LINE OF MEAN HIGH WATER
THE PERIODIC TIDES IN THIS AREA ARE NEGLIGIBLE
THIS MAP COMPLIES WITH NATIONAL MAP ACCURACY STANDARDS
FOR SALE BY U. S. GEOLOGICAL SURVEY, RESTON, VIRGINIA 22092
A FOLDER DESCRIBING TOPOGRAPHIC MAPS AND SYMBOLS IS AVAILABLE ON REQUEST



ROAD CLASSIFICATION
Primary highway, hard surface Light-duty road, hard or improved surface
Secondary highway, hard surface Unimproved road
Interstate Route U. S. Route State Route

GATESVILLE, N. C.
NE 1/4 WINTON 15' QUADRANGLE
N3622.5-W7645.7.5
1981
DMA 5656 IV NE-SERIES V842