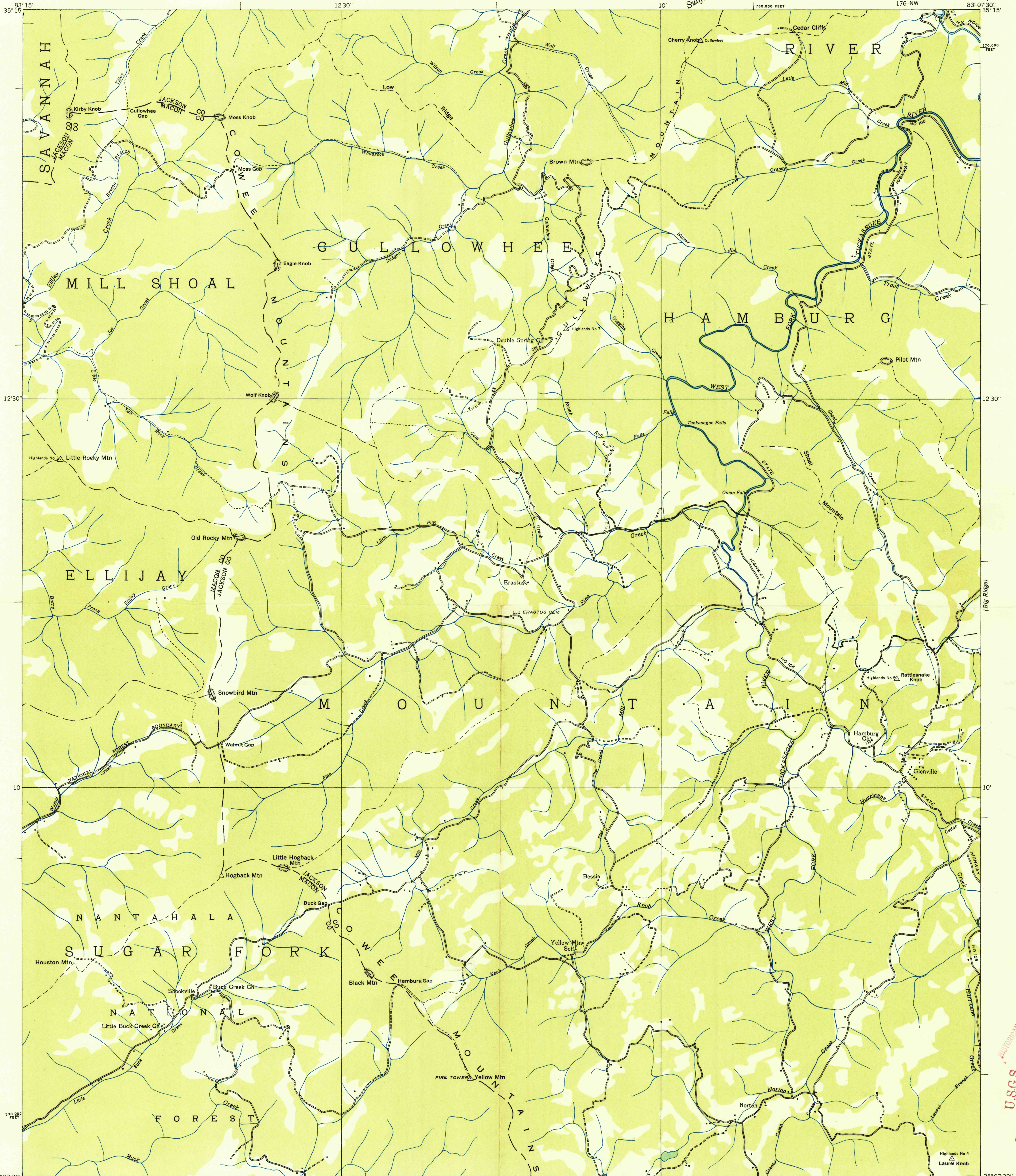
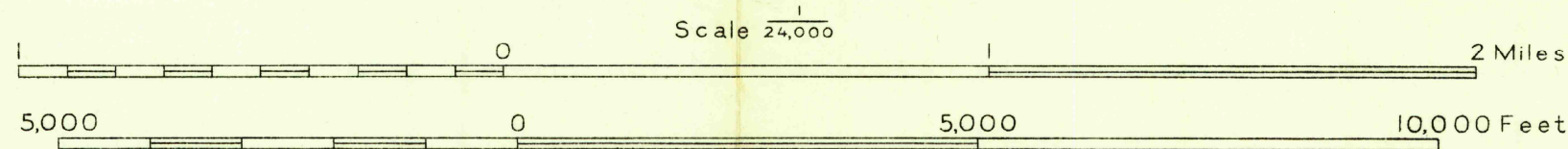


Advance sheet
Subject to correction



Albert Pike, Division Engineer
Compiled by U.S. Geological Survey from aerial photographs
Control by U.S. Geological Survey and U.S. Coast and Geodetic Survey
Field examination in 1935



TRUE NORTH
MAGNETIC NORTH
APPROXIMATE MEAN
DECLINATION, 1985

Polyconic projection, 1927 North American datum
10,000 foot grid based on North Carolina
rectangular coordinate system

Ridge line
Trail
GLENVILLE, N. C.
176-NW

USGS
Historical File
Topographic Division

U.S.G.S.
COPY
TOPOGRAPHIC DIVISION