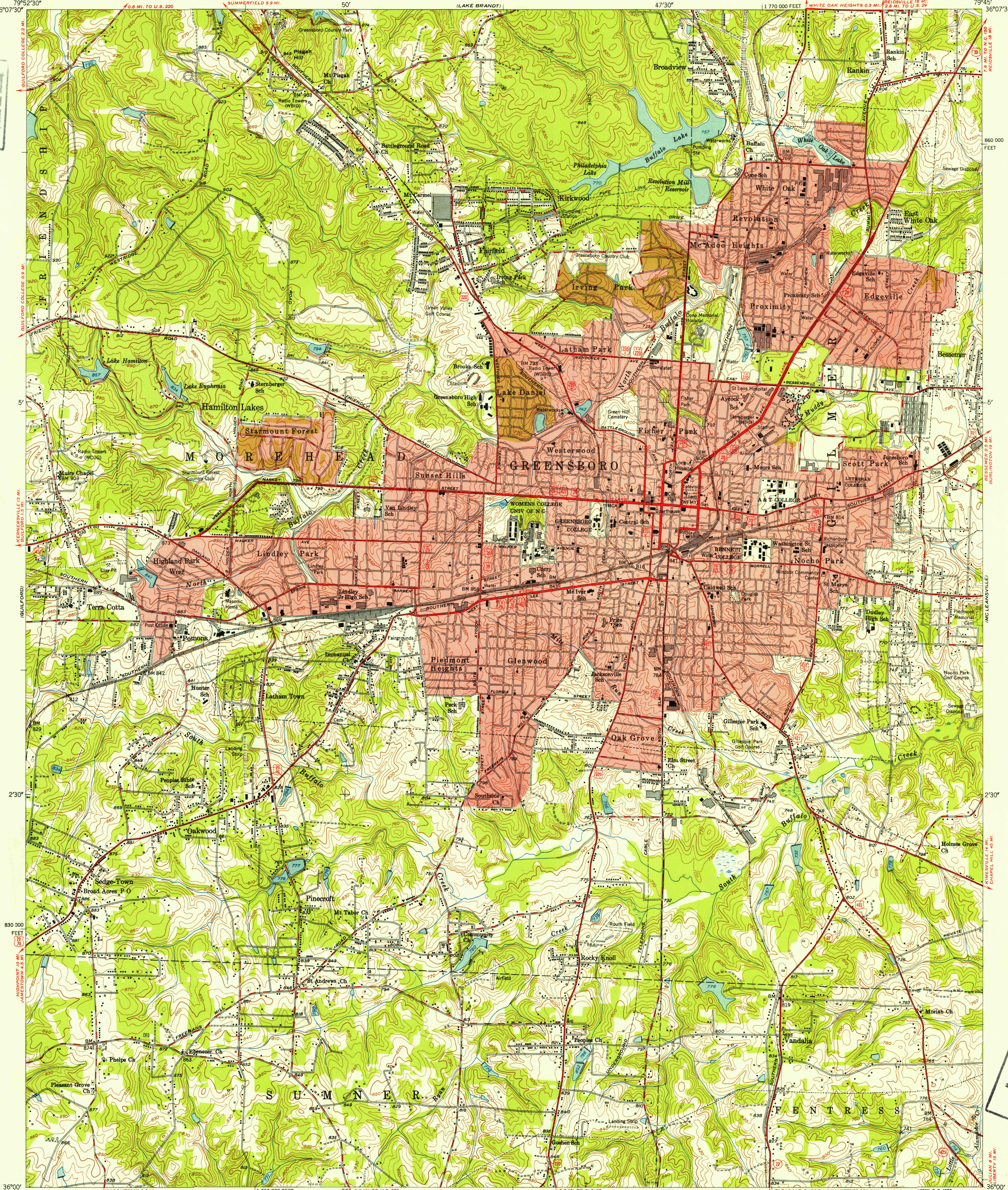


FILE COPY
Topographic and Historical

FILE COPY
Topographic and Historical



Mapped, edited, and published by the Geological Survey

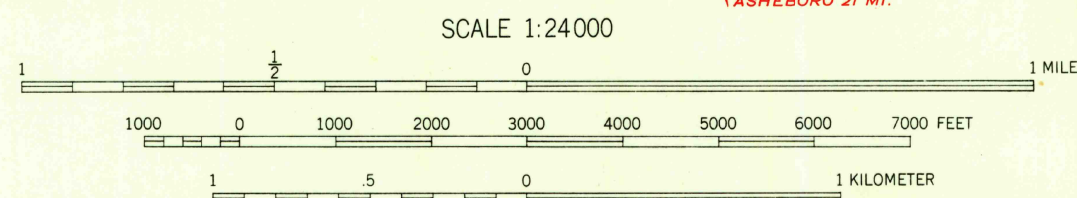
Control by USGS, USCGS and
North Carolina Geodetic Survey

Culture and drainage in part compiled from
aerial photographs taken 1948.
Topography by plane-table surveys 1951

Polyconic projection, 1927 North American datum
10,000-foot grid based on North Carolina coordinate system

Red tint indicates areas in which only
landmark buildings are shown

TRUE NORTH
MAGNETIC NORTH
APPROXIMATE MEAN
DECLINATION 1951



CONTOUR INTERVAL 10 FEET
DATUM IS MEAN SEA LEVEL

THIS MAP COMPLIES WITH NATIONAL MAP ACCURACY STANDARDS
FOR SALE BY U. S. GEOLOGICAL SURVEY, WASHINGTON 25, D. C.
A FOLDER DESCRIBING TOPOGRAPHIC MAPS AND SYMBOLS IS AVAILABLE ON REQUEST

USGS
Historical File
Topographic Division



ROAD CLASSIFICATION
Heavy-duty 4 LANE 6 LANE Light-duty
Medium-duty 4 LANE 6 LANE Unimproved dirt
U. S. Route State Route

GREENSBORO, N. C.
N3600-W7945/7.5

1951

FEB 19 1953