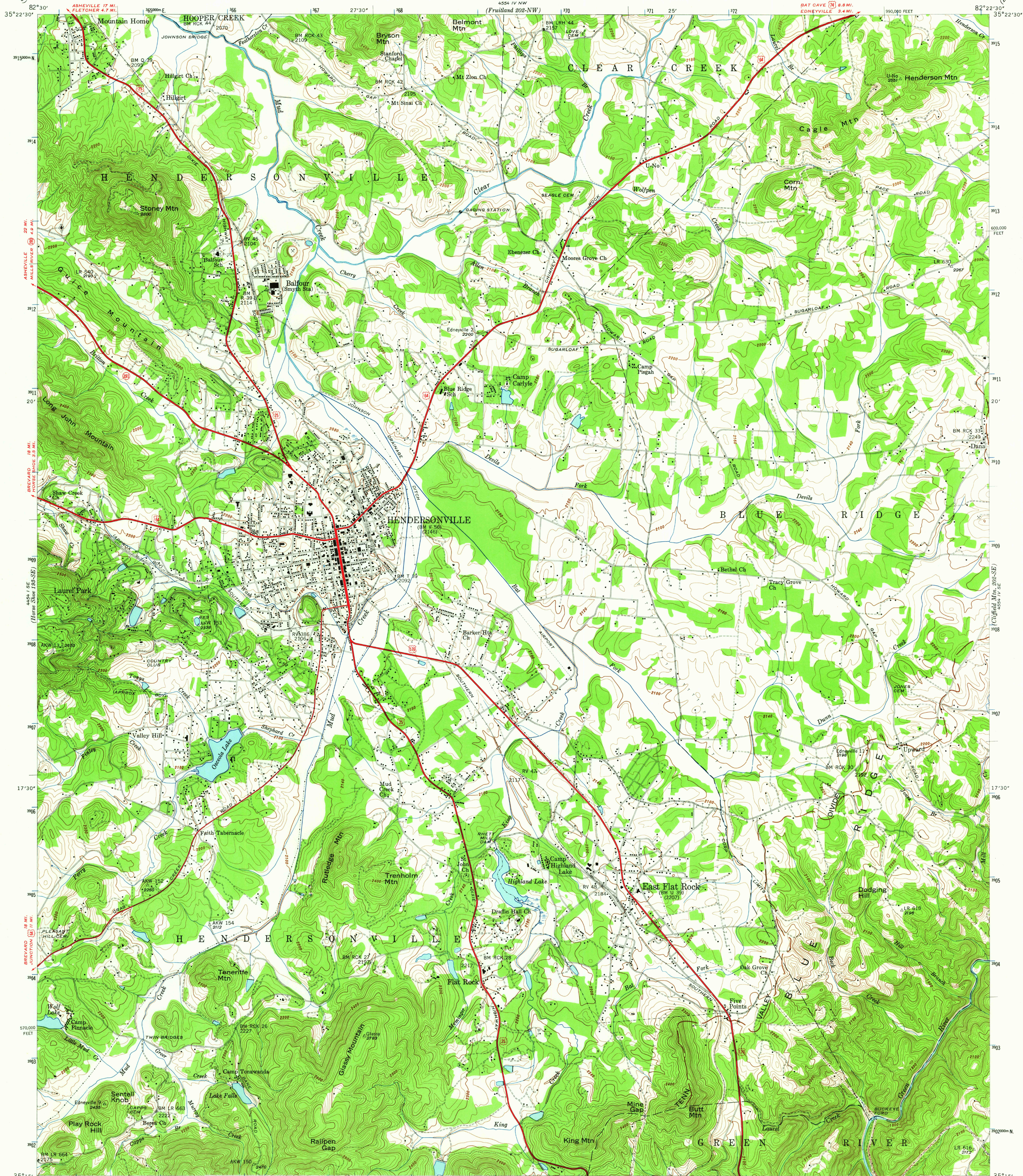


UNITED STATES  
DEPARTMENT OF THE INTERIOR  
GEOLOGICAL SURVEY

UNITED STATES  
TENNESSEE VALLEY AUTHORITY  
MAPS AND SURVEYS DIVISION

NORTH CAROLINA  
(HENDERSON COUNTY)  
HENDERSONVILLE QUADRANGLE  
202-SW



Control by USC&GS, USGS, and TVA  
Topography by the Geological Survey from aerial  
photographs by stereophotogrammetric methods  
Field examination by Tennessee Valley Authority, 1946  
1000-meter Universal Transverse Mercator grid ticks,  
zone 17, shown in blue

UTM GRID AND 1946 MAGNETIC NORTH  
DECLINATION AT CENTER OF SHEET

SCALE 1:24,000  
1 1000 0 1000 2000 3000 4000 5000 6000 7000 FEET  
1 5 0 5 10 KILOMETER  
Contour interval 20 feet  
Datum is mean sea level

USGS  
Historical File  
Topographic Division

HENDERSONVILLE, N. C.  
202-SW

N3515-W8222.5/7.5  
1946  
AMS 4554 IV SW-SERIES V842

FOR SALE BY U.S. GEOLOGICAL SURVEY, WASHINGTON, D. C. 20242.  
U. S. TENNESSEE VALLEY AUTHORITY, CHATTANOOGA OR KNOXVILLE, TENN.,  
A FOLDER DESCRIBING TOPOGRAPHIC MAPS AND SYMBOLS IS AVAILABLE ON REQUEST

ROUTES USUALLY TRAVELED  
HARD, IMPERVIOUS SURFACES  
OTHER SURFACE IMPROVEMENTS  
U. S. ROUTE STATE ROUTE

2110  
HISTORICAL  
U.S.G.S.  
FILE COPY  
TOPOGRAPHIC DIVISION