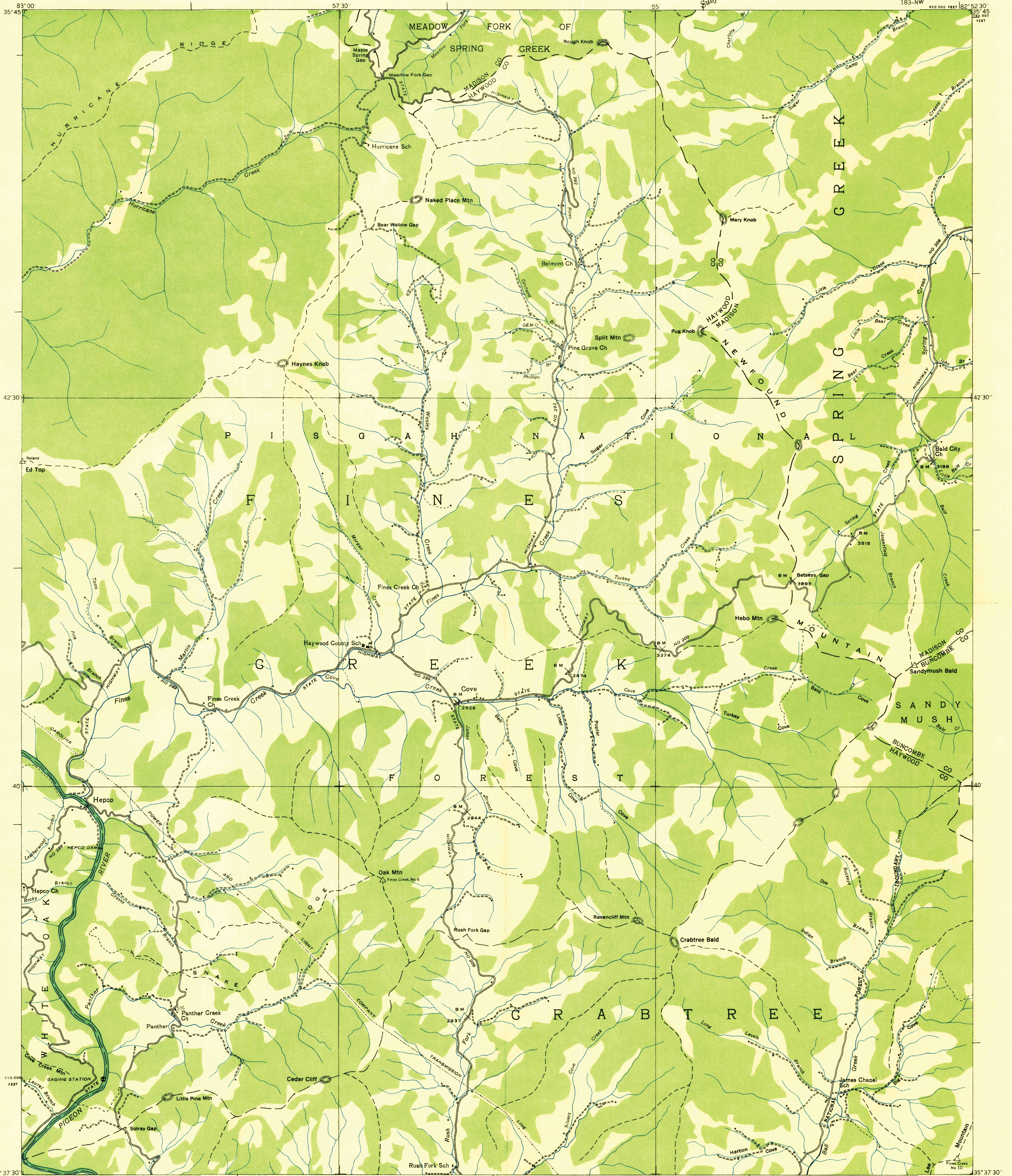
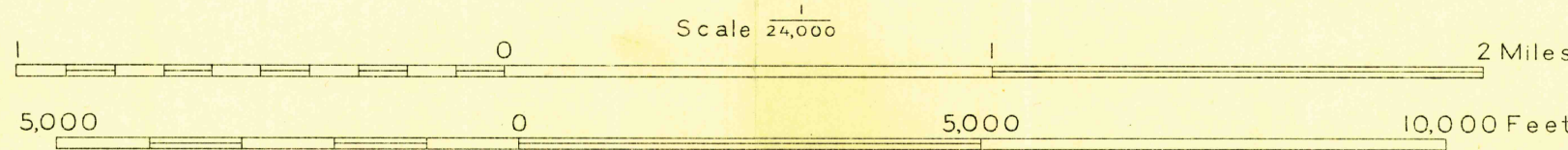


Advance sheet
Subject to correction



Albert Pike, Division Engineer
Compiled by U. S. Geological Survey from aerial photographs
Control by U. S. Geological Survey and U. S. Coast and Geodetic Survey
Field examination in 1936
Forest boundary by U. S. Forest Service



Datum is mean sea level

TRUE NORTH
MAGNETIC NORTH
APPROXIMATE MEAN
DECLINATION, 1936

Polyconic projection, 1927 North American datum
10,000 foot grid based on North Carolina
rectangular coordinate system

Ridge line
Trail
HEPCO, N. C.
183-NW

USGS
Historical File
Topographic Division

U.S.G.S.
Topographic Division