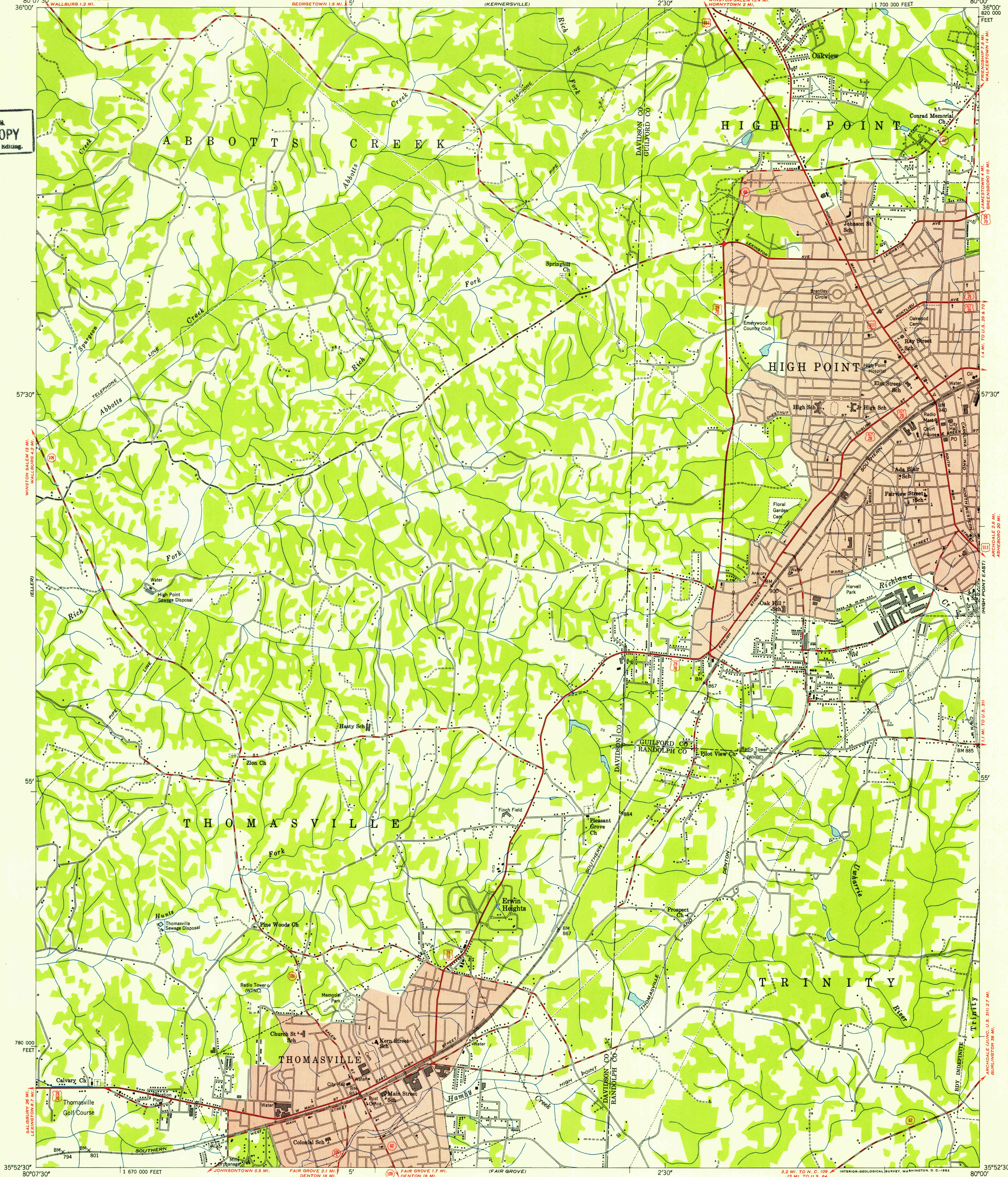
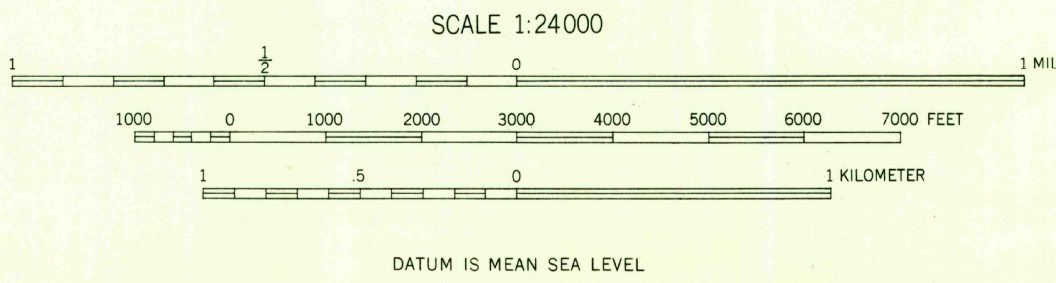


U. S. G. S.
FILE COPY
Inspection and Editing



Mapped, edited, and published by the Geological Survey
Control by USGS, USC&GS, USSCS, and
North Carolina Geodetic Survey
Compiled from aerial photographs by multiplex methods
Aerial photographs taken 1948, Field check 1949
Polyconic projection, 1927 North American datum
10,000-foot grid based on North Carolina coordinate system
Red tint indicates areas in which only
landmark buildings are shown

TRUE NORTH
MAGNETIC NORTH
APPROXIMATE MEAN
DECLINATION, 1949



ROAD CLASSIFICATION
Heavy-duty ——— 4 LANE 16 LANE Light-duty ———
Medium-duty ——— 4 LANE 16 LANE Unimproved dirt ———
U. S. Route State Route

USGS
Historical File
Topographic Division
Inspection and Editing

HIGH POINT WEST, N. C.
N3552.5-W8000/7.5
1949

THIS MAP COMPLIES WITH NATIONAL MAP ACCURACY STANDARDS
FOR SALE BY U. S. GEOLOGICAL SURVEY, WASHINGTON 25, D. C.
A FOLDER DESCRIBING TOPOGRAPHIC MAPS AND SYMBOLS IS AVAILABLE ON REQUEST