



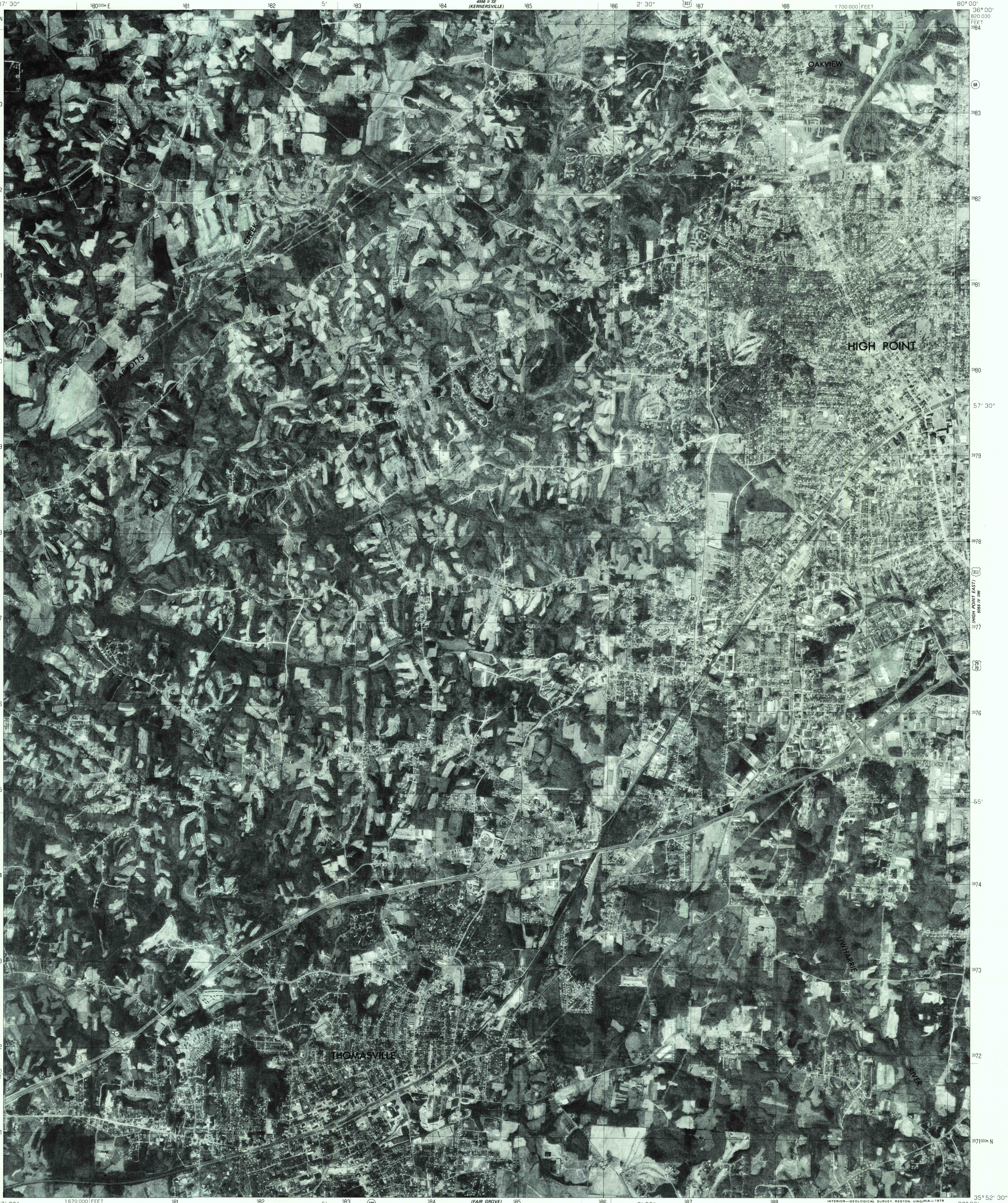
UNITED STATES  
DEPARTMENT OF THE INTERIOR  
GEOLOGICAL SURVEY



STATE OF NORTH CAROLINA  
DEPARTMENT OF NATURAL RESOURCES  
AND COMMUNITY DEVELOPMENT  
RALEIGH, NORTH CAROLINA

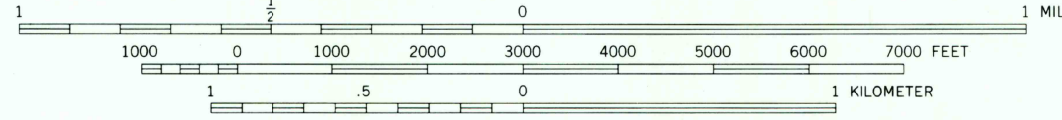
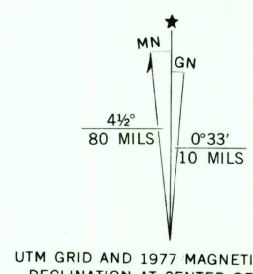
HIGH POINT WEST QUADRANGLE  
NORTH CAROLINA  
7.5 MINUTE SERIES ORTHOPHOTOQUAD

80° 00' 30" W  
36° 00' 00" N



Produced and published by the Geological Survey

Orthophoto prepared from 1:80,000-scale  
aerial photograph taken March 15, 1977  
Projection and 10,000-foot grid ticks: North Carolina  
coordinate system (Lambert conformal conic)  
1000-meter Universal Transverse Mercator grid,  
zone 17. 1927 North American datum  
Photomicroscopy rectified by optical scanning  
which may produce double or mismatched images;  
use the mean of image positions for map point



THIS MAP COMPLIES WITH NATIONAL MAP ACCURACY STANDARDS  
FOR SALE BY U.S. GEOLOGICAL SURVEY, RESTON, VIRGINIA 22092



PRINCIPAL NUMBERED HIGHWAYS  
Interstate Route U. S. Route State Route

This quadrangle area also covered by  
1:24,000-scale topographic map

HIGH POINT WEST, N. C.  
N3552.5-W8000/7.5

USGS  
Historical File  
Topographic Division

1977  
AMS 4955 I NE-SERIES V042

JUN 26 1979