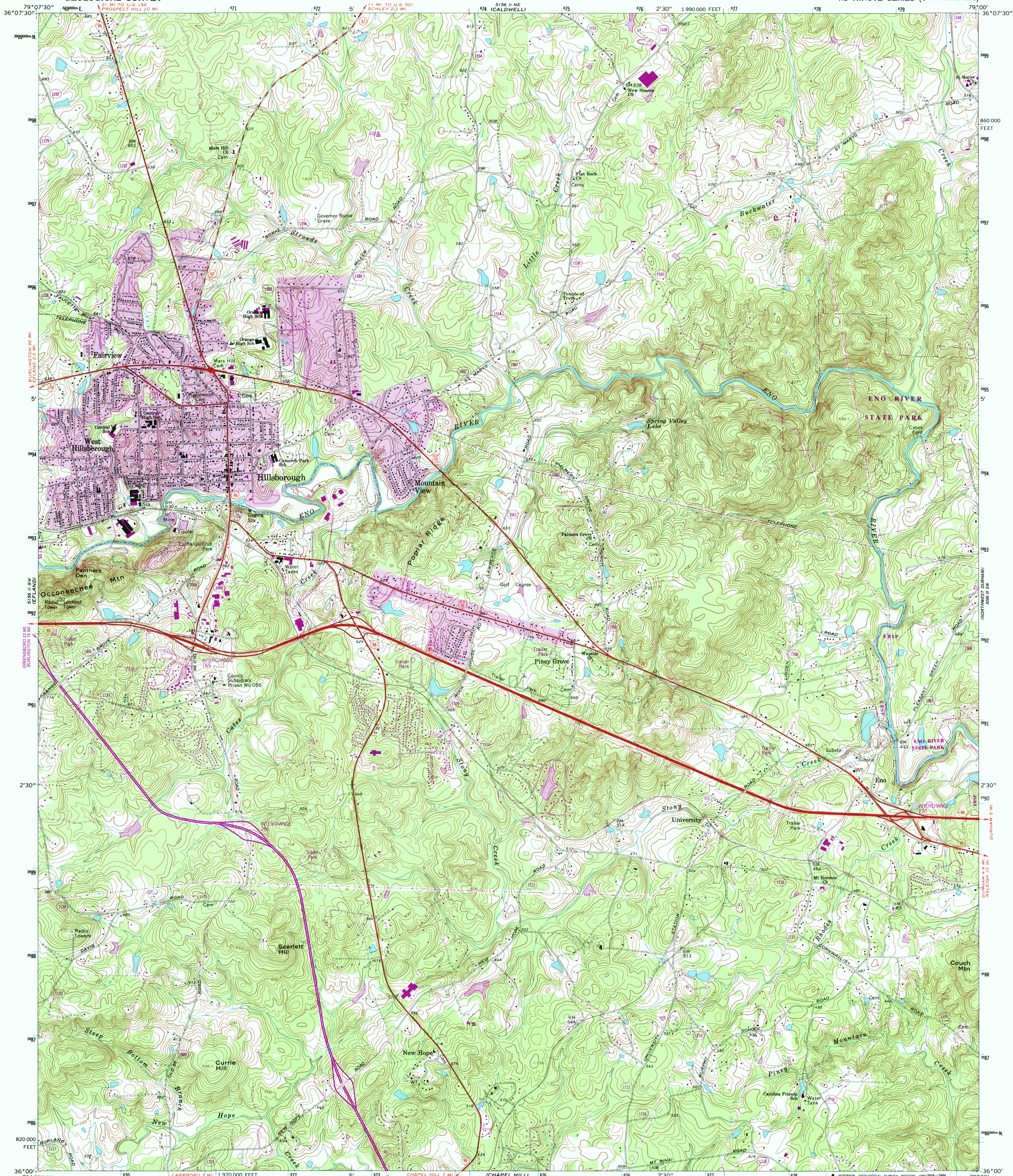
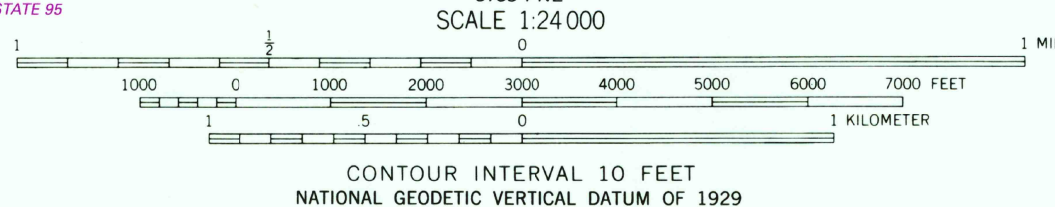
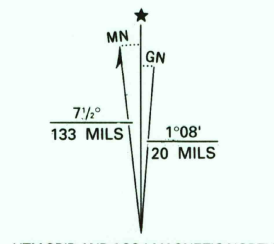


UNITED STATES  
DEPARTMENT OF THE INTERIOR  
GEOLOGICAL SURVEY

HILLSBOROUGH QUADRANGLE  
NORTH CAROLINA—ORANGE CO.  
7.5 MINUTE SERIES (TOPOGRAPHIC)



Produced by the United States Geological Survey  
Control by USGS and NOS/NOAA  
Topography by photogrammetric methods from aerial photographs taken 1964. Field checked 1968  
North American Datum of 1927 (NAD 27). Projection and 10,000-foot ticks: North Carolina coordinate system (Lambert conformal conic)  
Blue 1000-meter Universal Transverse Mercator ticks, zone 17  
North American Datum of 1983 (NAD 83) is shown by dashed corner ticks. The values of the shift between NAD 27 and NAD 83 for 7.5-minute intersections are obtainable from National Geodetic Survey NADCON software  
There may be private inholdings within the boundaries of the National or State reservations shown on this map  
Fine red dashed lines indicate selected fence and field lines where generally visible on aerial photographs. This information is unchecked

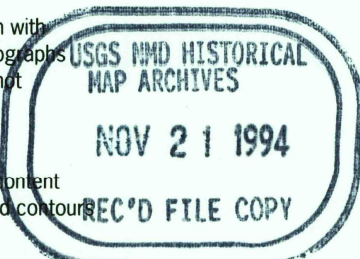


THIS MAP COMPLIES WITH NATIONAL MAP ACCURACY STANDARDS  
FOR SALE BY U.S. GEOLOGICAL SURVEY  
DENVER, COLORADO 80225, OR RESTON, VIRGINIA 22092  
A FOLDER DESCRIBING TOPOGRAPHIC MAPS AND SYMBOLS IS AVAILABLE ON REQUEST



ROAD CLASSIFICATION	
Primary highway, all weather, hard surface	Light-duty road, all weather, improved surface
Secondary highway, all weather, hard surface	Unimproved road, fair or dry weather
Interstate Route	U.S. Route
State Route	

Revisions shown in purple compiled in cooperation with State of North Carolina agencies from aerial photographs taken 1991 and other sources. This information not field checked. Map edited 1994  
Purple tint indicates extension of urban areas  
Information shown in purple may not meet USGS content standards and may conflict with previously mapped contour



HILLSBOROUGH, N. C.  
36079-A1-F-024  
1968  
REVISED 1994  
DMA 5156 II SE-SERIES V842