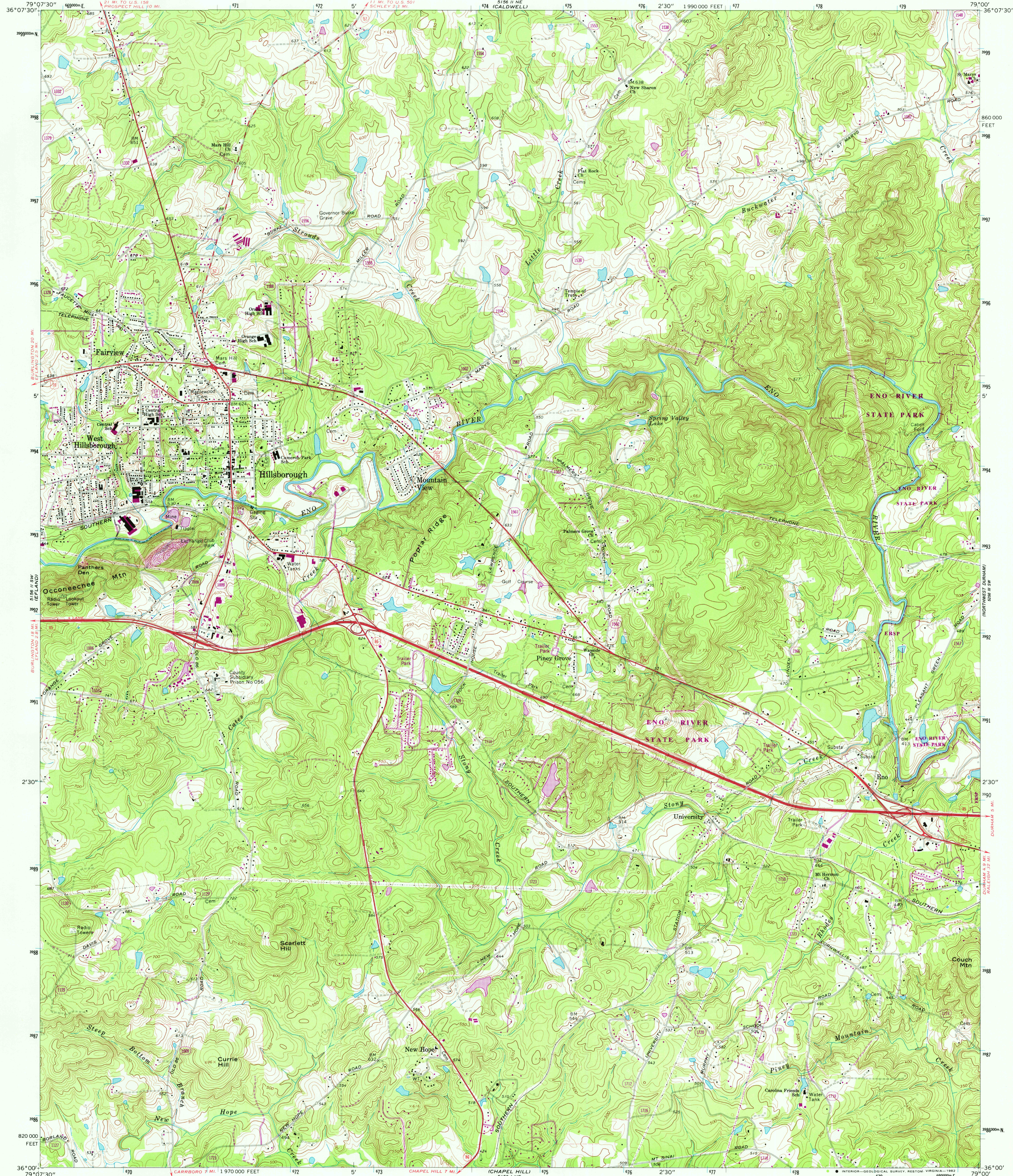


UNITED STATES
DEPARTMENT OF THE INTERIOR
GEOLOGICAL SURVEY

HILLSBOROUGH QUADRANGLE
NORTH CAROLINA—ORANGE CO.
7.5 MINUTE SERIES (TOPOGRAPHIC)



Mapped, edited, and published by the Geological Survey

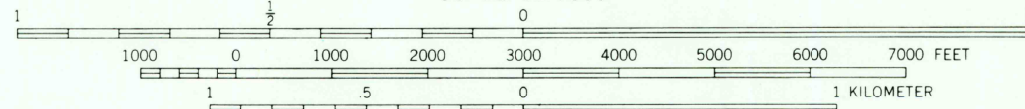
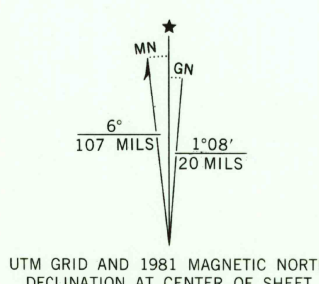
Control by USGS and NOS/NOAA

Topography by photogrammetric methods from aerial photographs taken 1964. Field checked 1968

Polyconic projection. 10,000-foot grid ticks based on North Carolina coordinate system. 1000-meter Universal Transverse Mercator grid ticks, zone 17, shown in blue. 1927 North American Datum. To place on the predicted North American Datum 1983 move the projection lines 1.1 meters south and 22 meters west as shown by dashed corner ticks

Fine red dashed lines indicate selected fence and field lines where generally visible on aerial photographs. This information is unchecked

There may be private inholdings within the boundaries of the National or State reservations shown on this map



CONTOUR INTERVAL 10 FEET
NATIONAL GEODETIC VERTICAL DATUM OF 1929

THIS MAP COMPLIES WITH NATIONAL MAP ACCURACY STANDARDS
FOR SALE BY U.S. GEOLOGICAL SURVEY, RESTON, VIRGINIA 22092
A FOLDER DESCRIBING TOPOGRAPHIC MAPS AND SYMBOLS IS AVAILABLE ON REQUEST

Revisions shown in purple and woodland compiled in cooperation with State of North Carolina agencies from aerial photographs taken 1980 and other sources. This information not field checked
Map edited 1981



ROAD CLASSIFICATION	
Primary highway, all weather, hard surface	Light-duty road, all weather, improved surface
Secondary highway, all weather, hard surface	Unimproved road, fair or dry weather
Interstate Route	U. S. Route
	State Route

HILLSBOROUGH, N.C.
N3600—W7900/7.5

1968
PHOTO-REVISED 1981
DMA 5156 II SE—SERIES V842

SEP 28 1981