

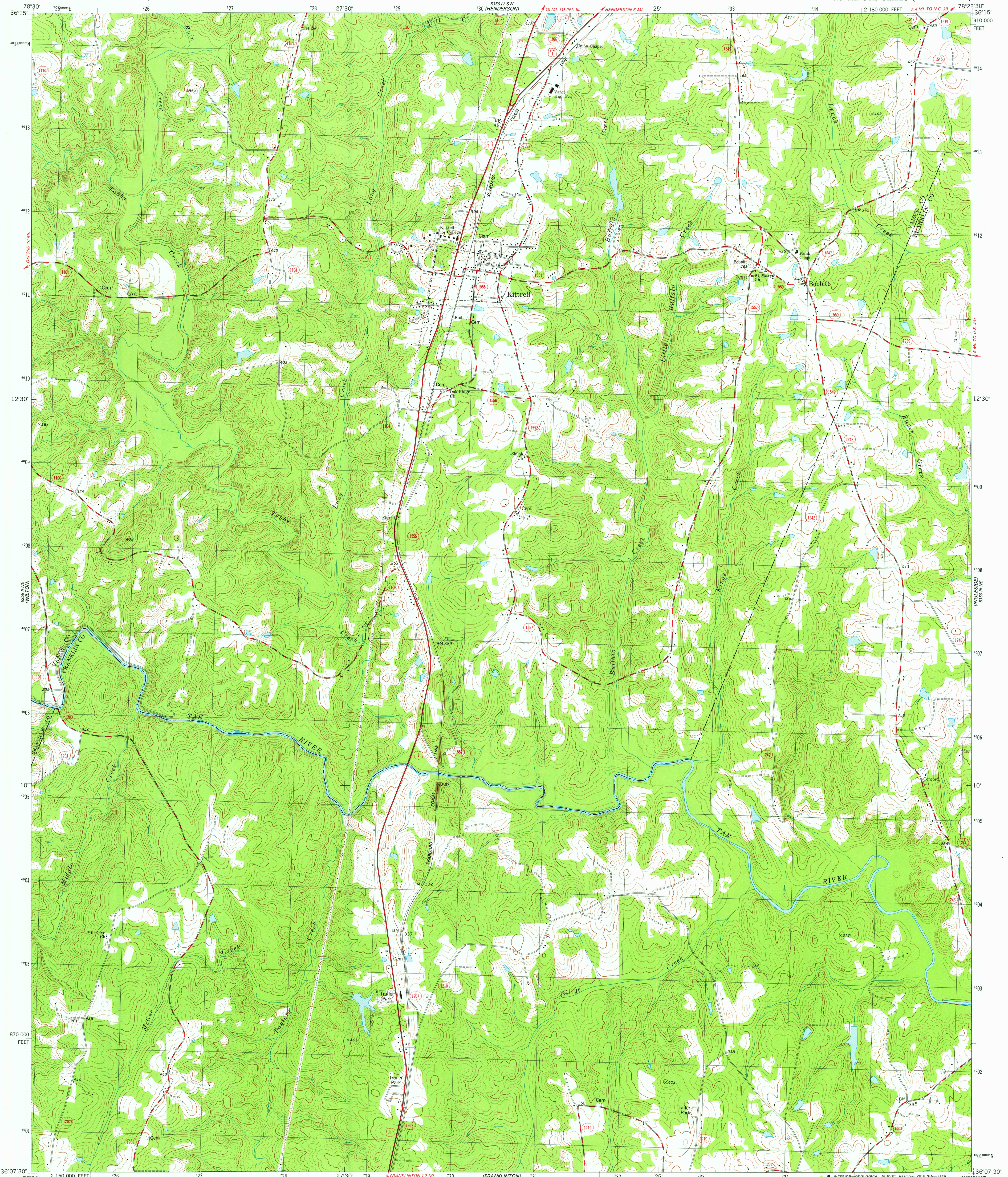
OXFORD 7.5-MINUTE

UNITED STATES DEPARTMENT OF THE INTERIOR GEOLOGICAL SURVEY

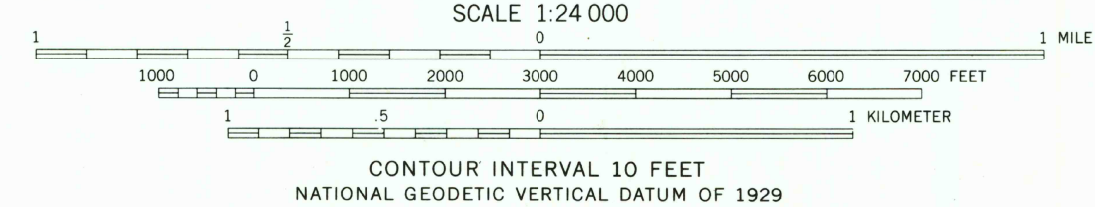
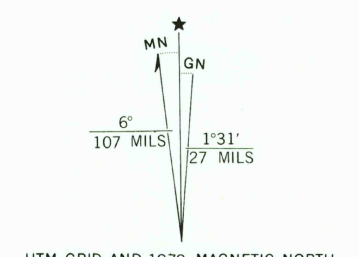


KITTRELL QUADRANGLE NORTH CAROLINA 7.5 MINUTE SERIES (TOPOGRAPHIC)

5356 N.W. (WAS. 5356)



Mapped, edited, and published by the Geological Survey. Control by USGS, NOS/NOAA, and North Carolina Geodetic Survey. Topography by photogrammetric methods from aerial photographs taken 1971. Field checked 1976. Map edited 1979. Projection and 10,000-foot grid ticks: North Carolina coordinate system, (Lambert conformal conic) 1000-meter Universal Transverse Mercator grid, zone 17 1927 North American datum. To place on the predicted North American Datum 1983 move the projection lines 12 meters south and 24 meters west as shown by dashed corner ticks. Fine red dashed lines indicate selected fence and field lines where generally visible on aerial photographs. This information is unchecked.



THIS MAP COMPLIES WITH NATIONAL MAP ACCURACY STANDARDS FOR SALE BY U. S. GEOLOGICAL SURVEY, RESTON, VIRGINIA 22092 A FOLDER DESCRIBING TOPOGRAPHIC MAPS AND SYMBOLS IS AVAILABLE ON REQUEST



ROAD CLASSIFICATION: Primary highway, hard surface; Secondary highway, hard surface; Interstate Route; U. S. Route; State Route. Light-duty road, hard or improved surface; Unimproved road. USGS Historical File Topographic Division. FEB 13 1980. KITTRELL, N. C. N3607.5-W7822.5/7.5. 1979. DMA 5356 III NW-SERIES V842