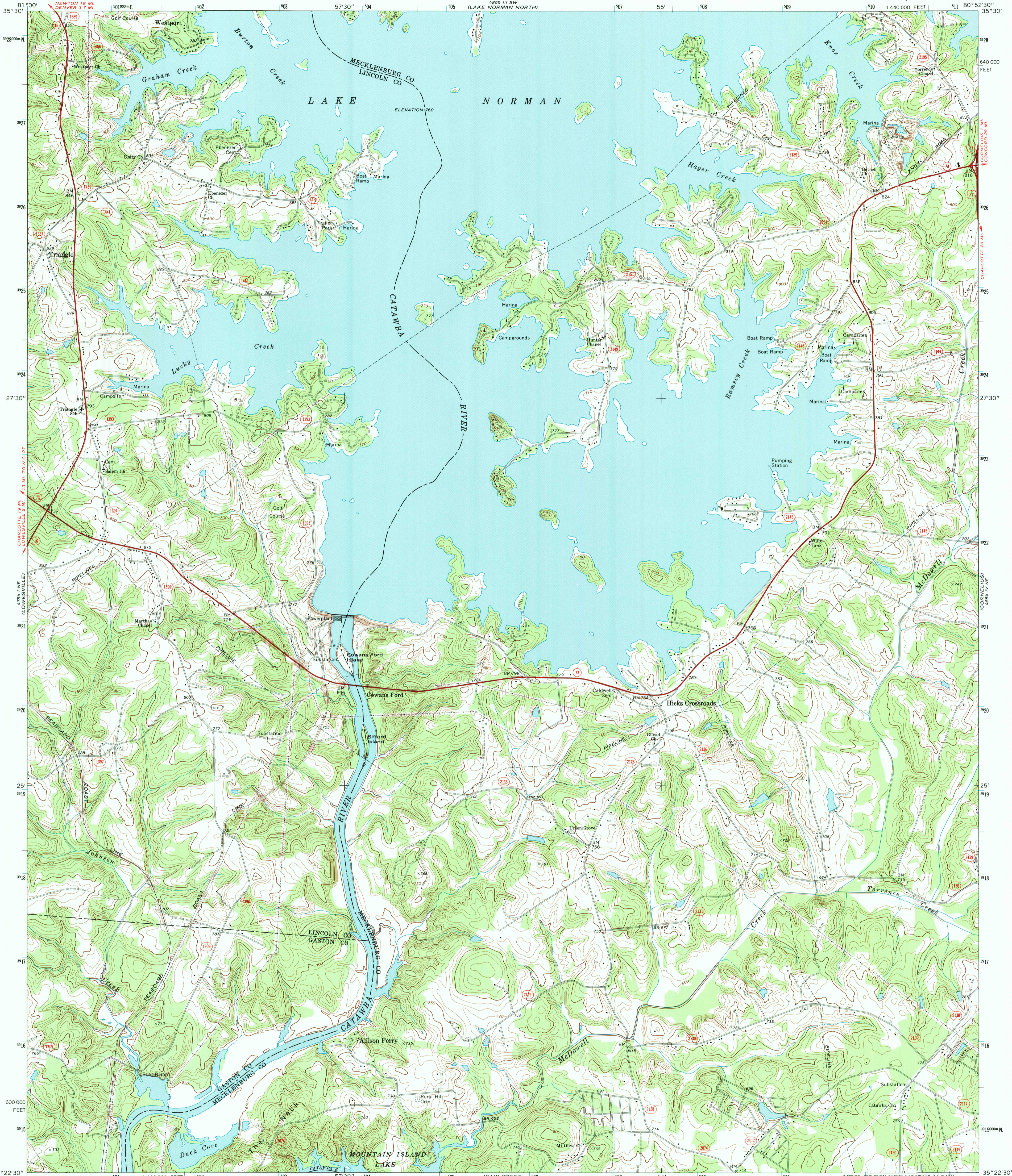
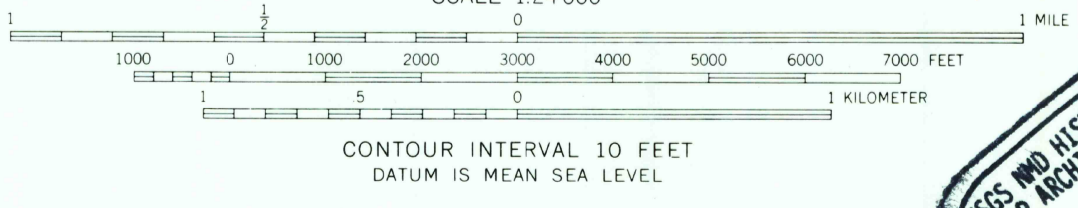
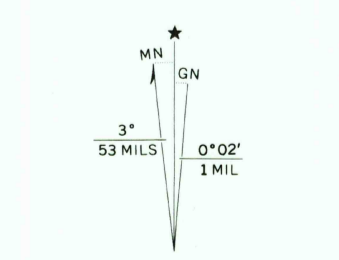


BASE III SE  
(MOORESVILLE)



Mapped, edited, and published by the Geological Survey  
Control by USGS and USC&GS  
Topography by photogrammetric methods from aerial  
photographs taken 1965. Field checked 1970  
Supersedes Hick's Crossroads map dated 1948  
Polyconic projection. 1927 North American datum  
10,000-foot grid based on North Carolina coordinate system  
1000-meter Universal Transverse Mercator grid ticks,  
zone 17, shown in blue



USGS AND HISTORICAL  
MAP ARCHIVES  
AUG 04 1995  
REC'D FILE COPY

ROAD CLASSIFICATION

Primary highway, hard surface	Light-duty road, hard or improved surface
Secondary highway, hard surface	Unimproved road
Interstate Route	U. S. Route
	State Route

THIS MAP COMPLIES WITH NATIONAL MAP ACCURACY STANDARDS  
FOR SALE BY U. S. GEOLOGICAL SURVEY, WASHINGTON, D. C. 20242  
A FOLDER DESCRIBING TOPOGRAPHIC MAPS AND SYMBOLS IS AVAILABLE ON REQUEST

LAKE NORMAN SOUTH, N. C.  
N3522.5-W8052.5/7.5  
1970  
AMS 4854 IV NW-SERIES V842

