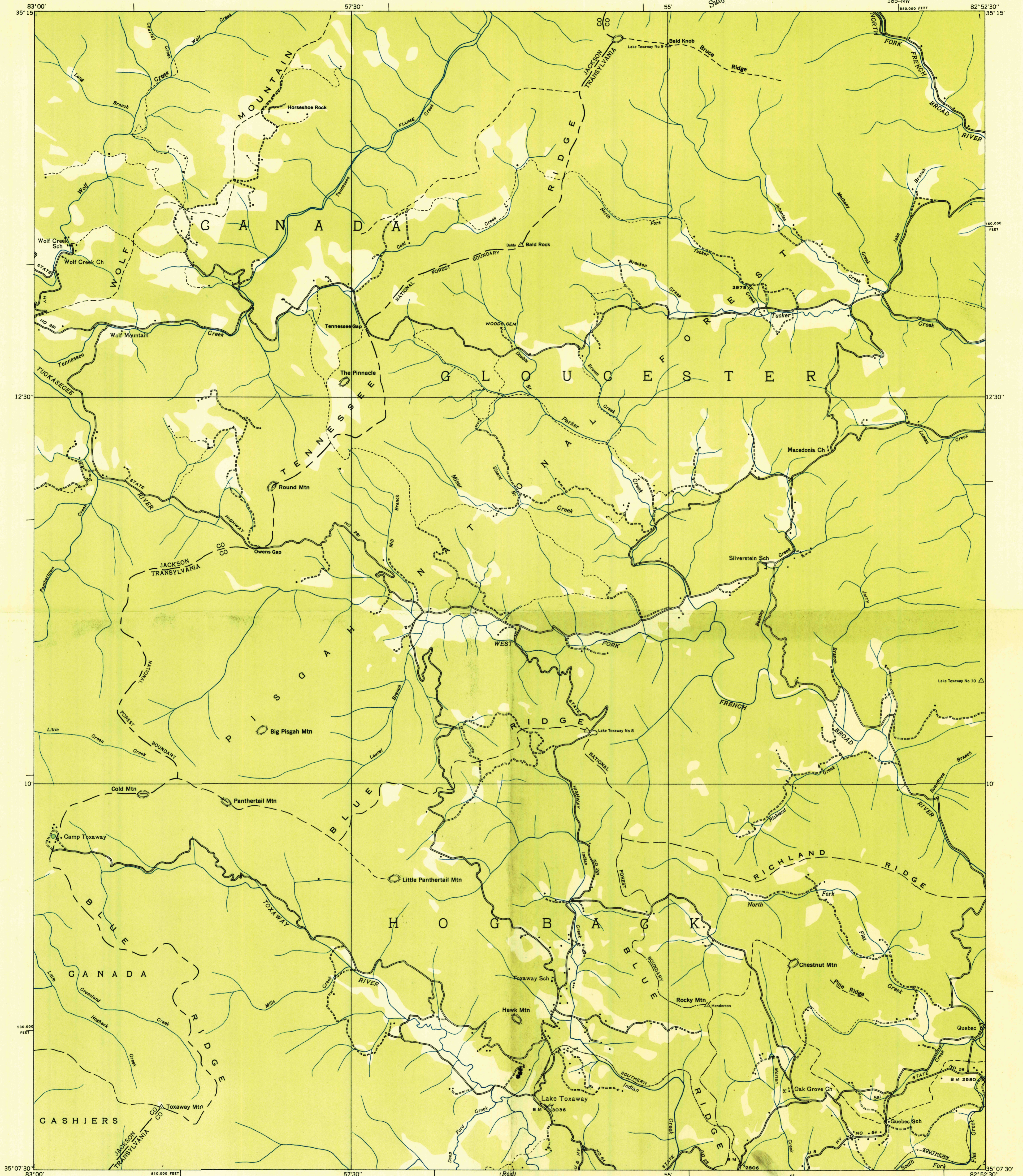
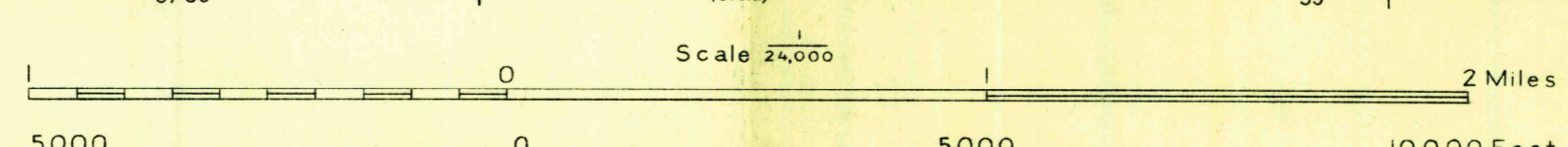


Advance sheet
Subject to correction



Albert Pike, Division Engineer
Compiled by U. S. Geological Survey from aerial photographs
Control by U. S. Geological Survey and U. S. Coast and Geodetic Survey
Field examination in 1935



Polyconic projection. 1927 North American datum
10,000 foot grid based on North Carolina
rectangular coordinate system
Ridge line
Trail

APPROXIMATE MEAN
DECLINATION, 1935
USGS
Historical File
Topographic Division
LAKE TOXAWAY, N. C.
185-NW

U.S.G.S.
FIELD COPY
TOPOGRAPHIC DIVISION

HISTORICAL