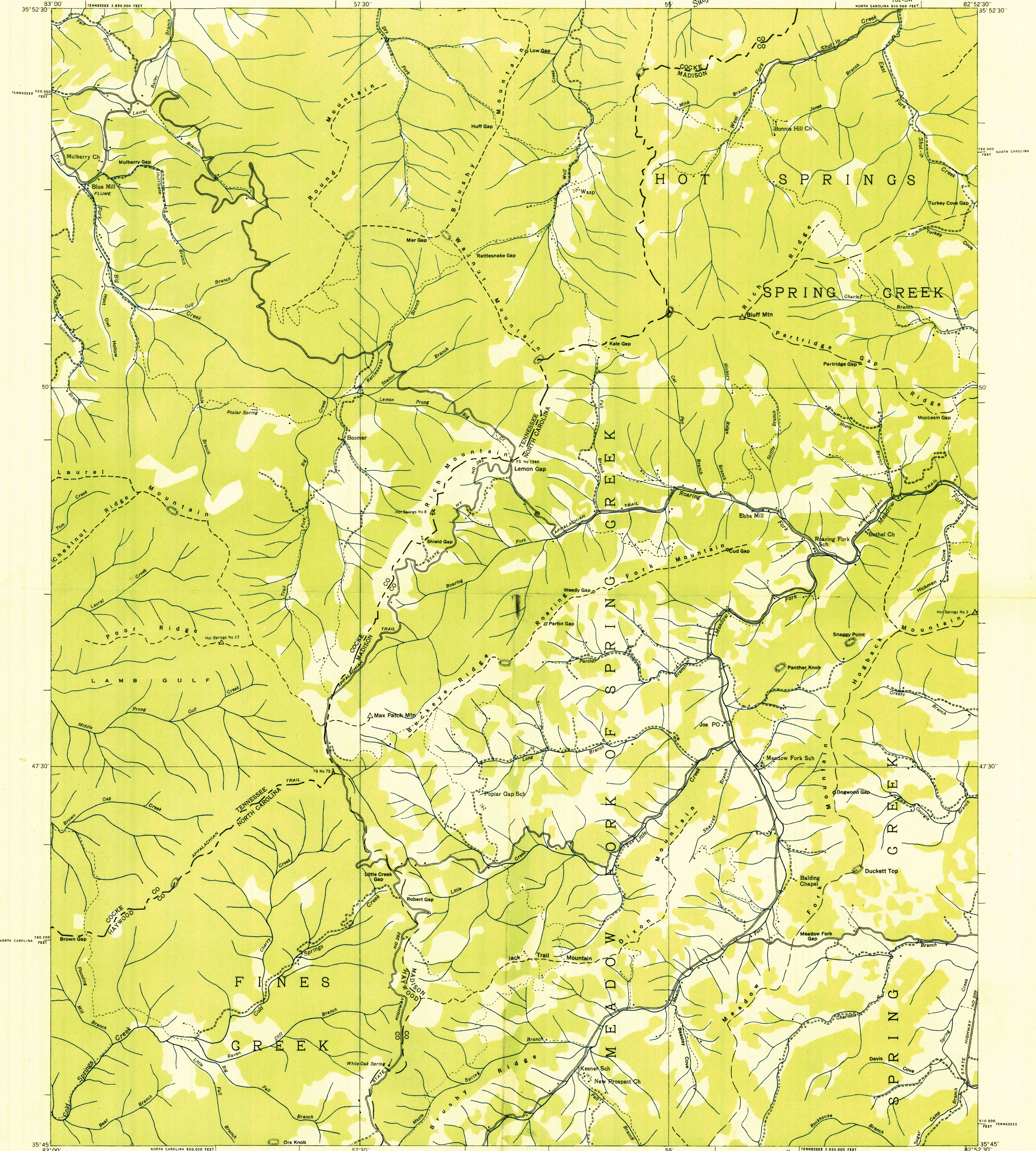
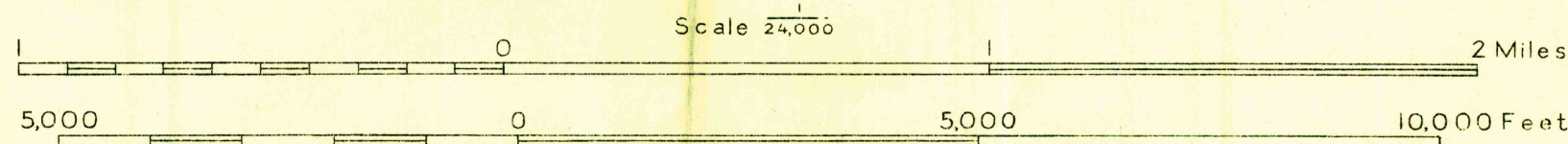


Advance sheet  
Subject to correction



Albert Pike, Division Engineer  
Compiled by U. S. Geological Survey from aerial photographs  
Control by U. S. Geological Survey, U. S. Coast and  
Geodetic Survey and U. S. Forest Service  
Field examination in 1935



Datum is mean sea level

USGS  
Historical File  
Topographic Division U.S.G.S.

APPROXIMATE MEAN  
DECLINATION, 1985

Polygonic projection. 1927 North American datum  
10,000 foot grid based on North Carolina and  
Tennessee rectangular coordinate systems

Ridge line  
Trail

LEMON GAP, N. C.-TENN.  
182-SW

HISTORICAL  
TOPOGRAPHIC DIVISION