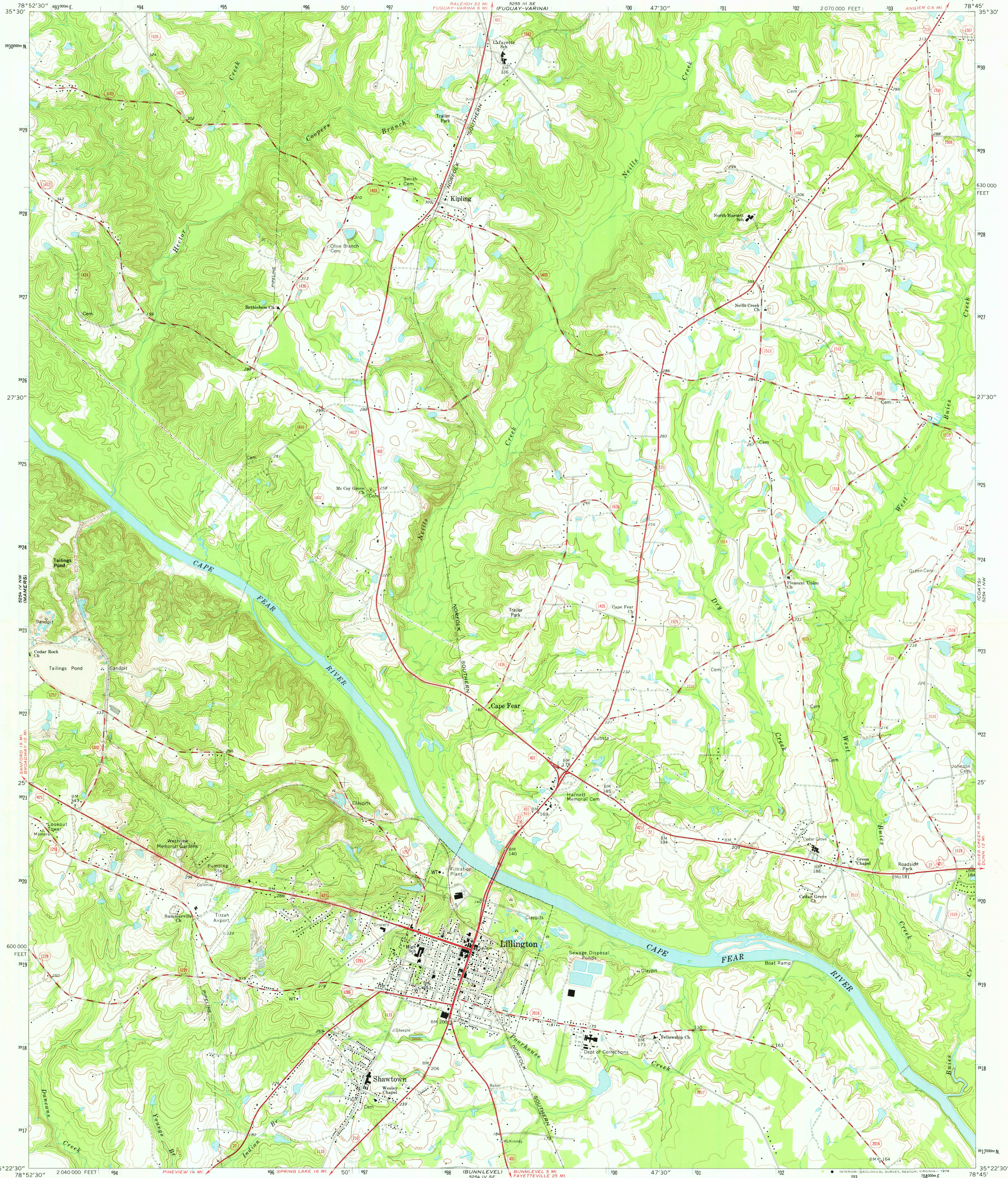


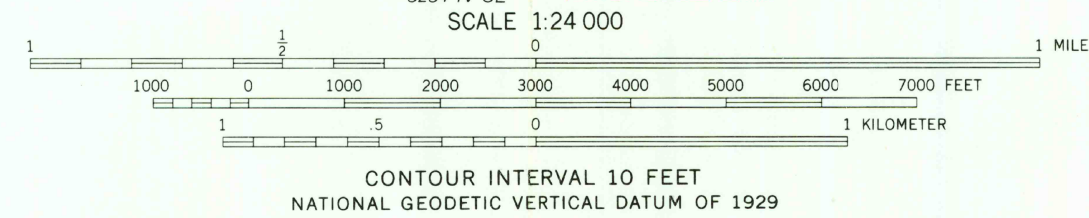
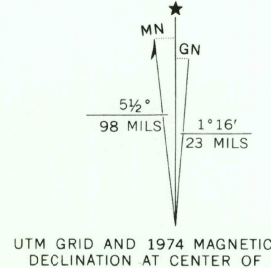
UNITED STATES  
DEPARTMENT OF THE INTERIOR  
GEOLOGICAL SURVEY

STATE OF NORTH CAROLINA  
DEPARTMENT OF NATURAL AND ECONOMIC RESOURCES  
RALEIGH, NORTH CAROLINA

LILLINGTON QUADRANGLE  
NORTH CAROLINA—HARNETT CO.  
7.5 MINUTE SERIES (TOPOGRAPHIC)



Mapped, edited, and published by the Geological Survey  
Control by USGS, NOS/NOAA, USCE, and North Carolina Geodetic Survey  
Topography by photogrammetric methods from aerial photographs  
taken 1973. Field checked 1974  
Projection and 10,000-foot grid ticks: North Carolina coordinate  
system (Lambert conformal conic)  
1000-meter Universal Transverse Mercator grid ticks,  
zone 17, shown in blue. 1927 North American datum  
Fine red dashed lines indicate selected fence and field lines where  
generally visible on aerial photographs. This information is unchecked



ROAD CLASSIFICATION  
Primary highway, hard surface  
Secondary highway, hard surface  
Unimproved road  
Interstate Route  
U. S. Route  
State Route  
Light-duty road, hard or improved surface



THIS MAP COMPLIES WITH NATIONAL MAP ACCURACY STANDARDS  
FOR SALE BY U. S. GEOLOGICAL SURVEY, RESTON, VIRGINIA 22092  
A FOLDER DESCRIBING TOPOGRAPHIC MAPS AND SYMBOLS IS AVAILABLE ON REQUEST

USGS  
Historical File  
Topographic Division

LILLINGTON, N. C.  
N3522.5-W7845/7.5  
1978

AMS 5254 IV NE—SERIES V842

AUG 17 1978

3300