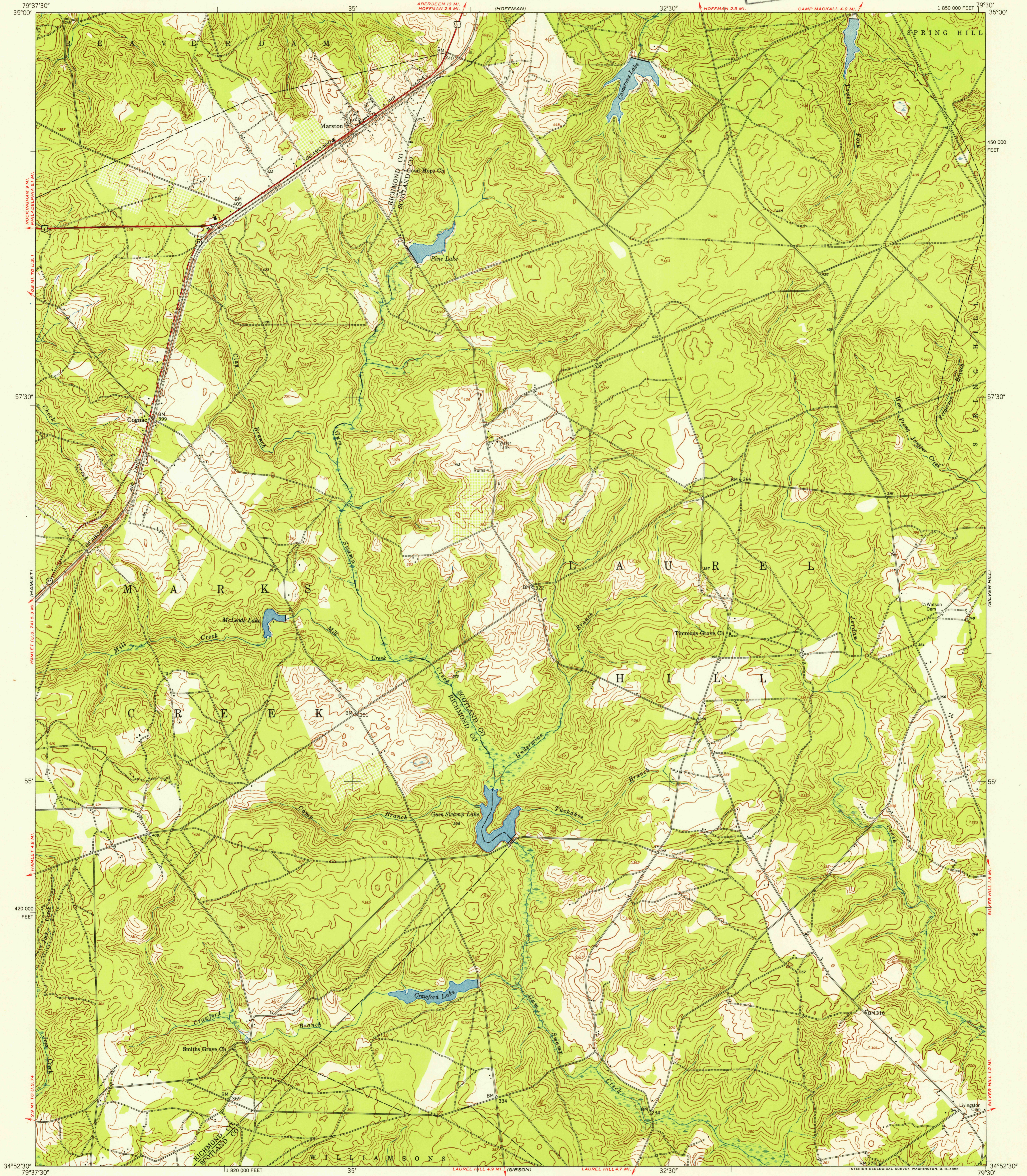
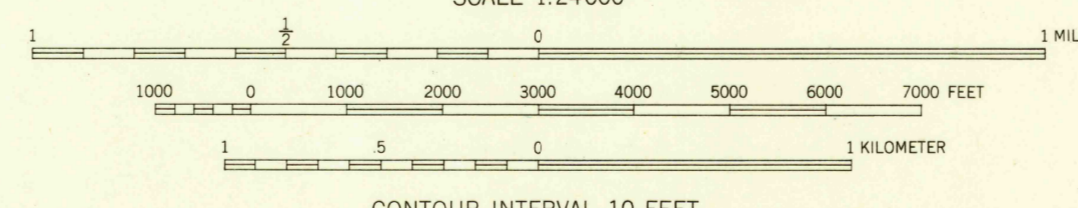


U.S.G.S.
FILE COPY
Inspection and Editing

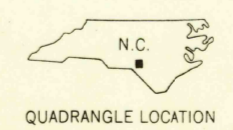


Mapped by the Army Map Service
Published for civil use by the Geological Survey
Control by USGS, USC&GS, and USCE
Topography from aerial photography by multiplex methods
Aerial photographs taken 1948 Field check 1949
Polyconic projection. 1927 North American datum
10,000-foot grid based on North Carolina coordinate system
Unchecked elevations are shown in brown

24°
TRUE NORTH
MAGNETIC NORTH
APPROXIMATE MEAN
DECLINATION, 1949



USGS
Historical File
Topographic Division



ROAD CLASSIFICATION

| | | |
|-------------|----------------|-----------------|
| Heavy-duty | 4 LANE 16 LANE | Light-duty |
| Medium-duty | 4 LANE 16 LANE | Unimproved dirt |
| U.S. Route | | State Route |

U.S.G.S.
FILE COPY
Inspection and Editing

MARSTON, N.C.
NE/4 HAMLET 15' QUADRANGLE
N3452.5-W7930/7.5
1949

THIS MAP COMPLIES WITH NATIONAL MAP ACCURACY STANDARDS
FOR SALE BY U. S. GEOLOGICAL SURVEY, WASHINGTON 25, D. C.
A FOLDER DESCRIBING TOPOGRAPHIC MAPS AND SYMBOLS IS AVAILABLE ON REQUEST

OCT 21 1953

2170