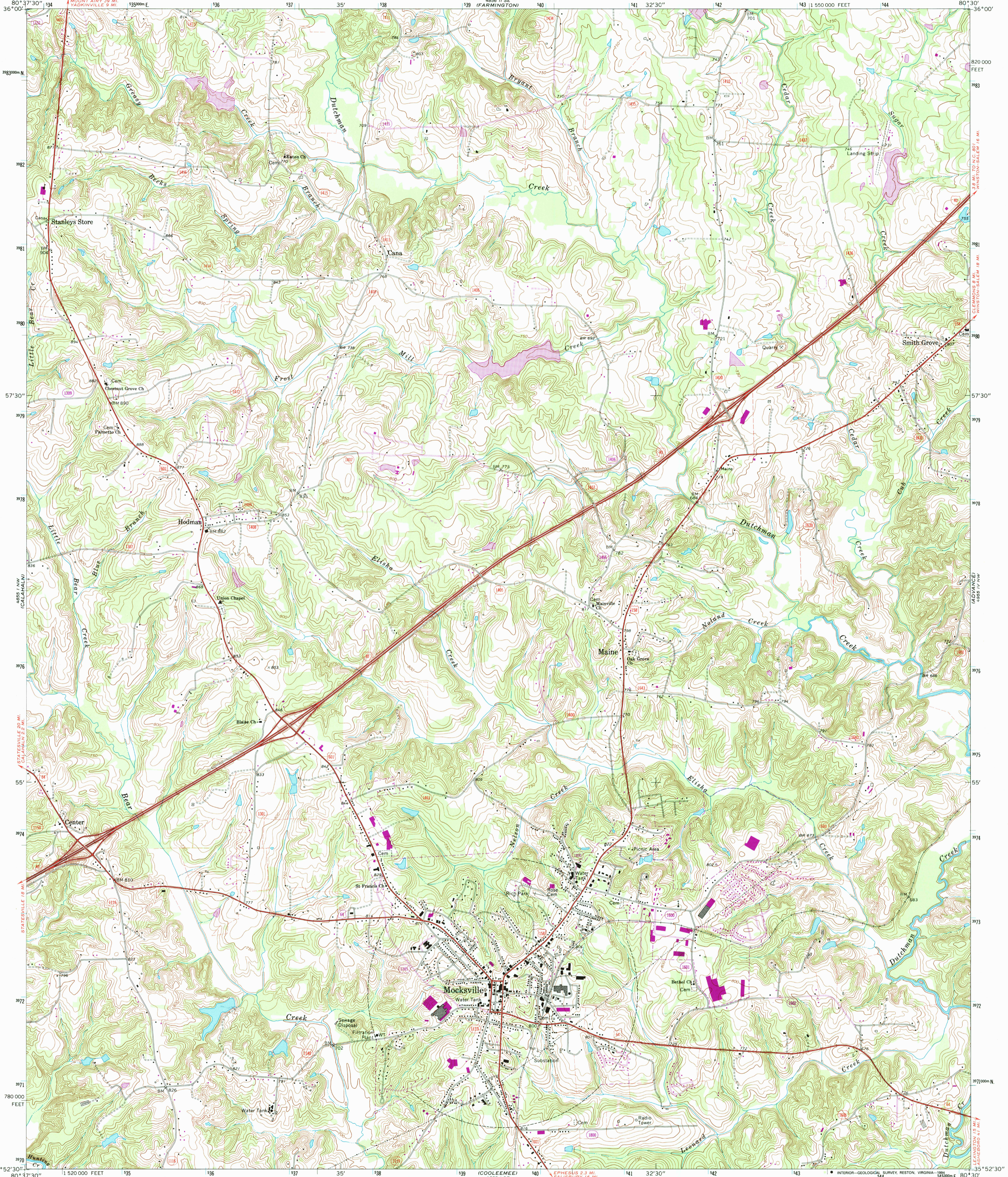
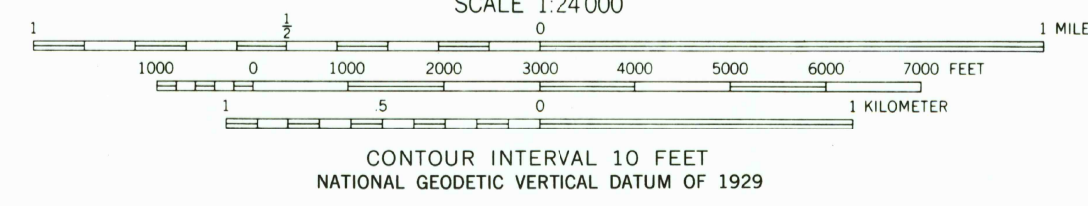
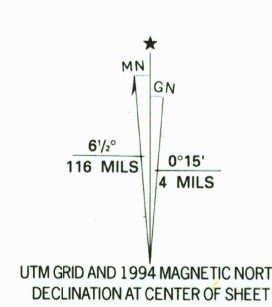


UNITED STATES
DEPARTMENT OF THE INTERIOR
GEOLOGICAL SURVEY

MOCKVILLE QUADRANGLE
NORTH CAROLINA—DAVIE CO.
7.5 MINUTE SERIES (TOPOGRAPHIC)



Produced by the United States Geological Survey
Control by USGS and NOS/NOAA
Topography by photogrammetric methods from aerial photographs taken 1965. Field checked 1969. Map edited 1969
Projection and 10,000-foot grid ticks: North Carolina coordinate system, (Lambert conformal conic)
1000-meter Universal Transverse Mercator grid ticks, zone 17, shown in blue 1927 North American Datum (NAD 27)
North American Datum of 1983 (NAD 83) is shown by dashed corner ticks. The values of the shift between NAD 27 and NAD 83 for 7.5-minute intersections are given in USGS Bulletin 1875
Fine red dashed lines indicate selected fence and field lines where generally visible on aerial photographs. This information is unchecked

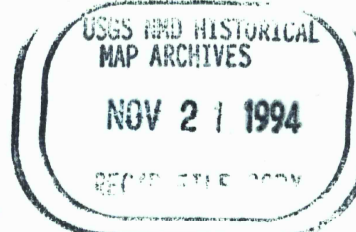


ROAD CLASSIFICATION

Primary highway, hard surface	Light duty road, hard or improved surface
Secondary highway, hard surface	Unimproved road
Interstate Route	U. S. Route
	State Route

THIS MAP COMPLIES WITH NATIONAL MAP ACCURACY STANDARDS
FOR SALE BY U.S. GEOLOGICAL SURVEY
DENVER, COLORADO 80225, OR RESTON, VIRGINIA 22092
A FOLDER DESCRIBING TOPOGRAPHIC MAPS AND SYMBOLS IS AVAILABLE ON REQUEST

Revisions shown in purple compiled in cooperation with State of North Carolina agencies from aerial photographs taken 1991 and other sources. This information not field checked. Map edited 1994
Information shown in purple may not meet USGS content standards and may conflict with previously mapped contours



MOCKVILLE, N. C.
35080-H5-TF-024
1969
REVISED 1994
DMA 4855 I NE-SERIES V842