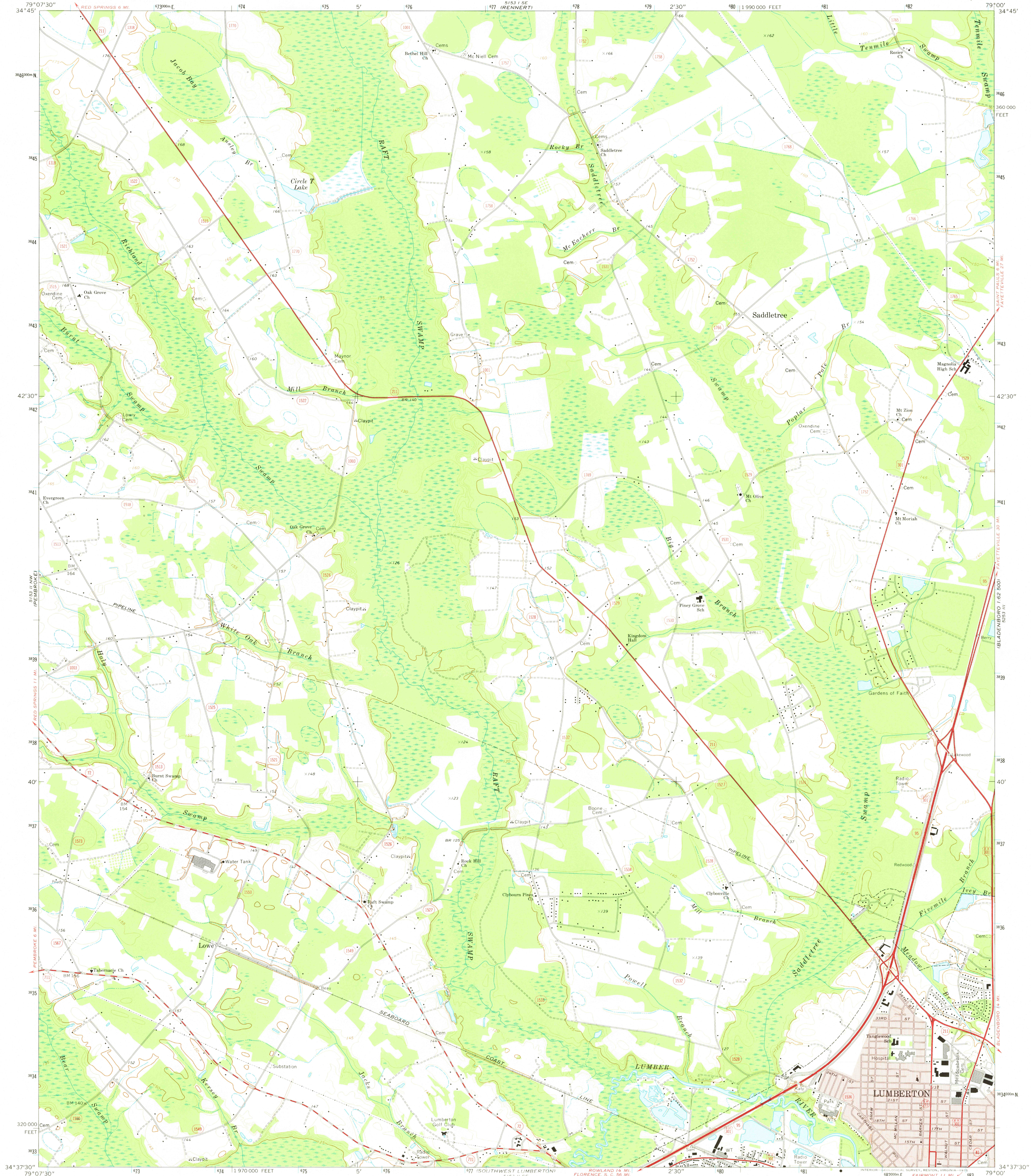


5153 I NW
RED SPRINGS 6 MI

UNITED STATES
DEPARTMENT OF THE INTERIOR
GEOLOGICAL SURVEY

NORTHWEST LUMBERTON QUADRANGLE
NORTH CAROLINA—ROBESON CO.
7.5 MINUTE SERIES (TOPOGRAPHIC)

5153 I SE
GAIN PAULS 162 500



Mapped, edited, and published by the Geological Survey
Control by USGS, USC&GS, and North Carolina Geodetic Survey
Topography by photogrammetric methods from aerial photographs
taken 1971. Field checked 1972
Projection and 10,000-foot grid ticks: North Carolina coordinate
system (Lambert conformal conic)
1000-meter Universal Transverse Mercator grid ticks,
zone 17, shown in blue. 1927 North American datum
Red tint indicates area in which only landmark buildings are shown
Short dashed blue lines indicate elliptical bay outlines
visible on aerial photographs

5153 I NW
GAIN PAULS 162 500

5153 I NW
GAIN PAULS 162 500

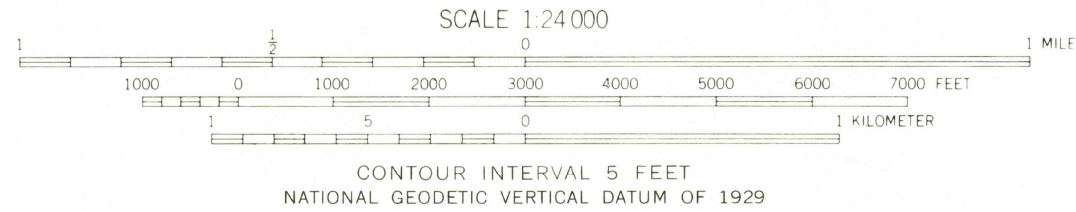
5153 I NW
GAIN PAULS 162 500

5153 I NW
GAIN PAULS 162 500

5153 I NW
GAIN PAULS 162 500

5153 I NW
GAIN PAULS 162 500

5153 I NW
GAIN PAULS 162 500



ROAD CLASSIFICATION
Primary highway, hard surface
Secondary highway, hard surface
Unimproved road
Interstate Route
U. S. Route
State Route
Light-duty road, hard or improved surface



USGS
Historical File
Topographic Division

NORTHWEST LUMBERTON, N. C.
N3437.5—W7900/7.5
1972

AMS 5153 II NE—SERIES V842

FEB 14 1975