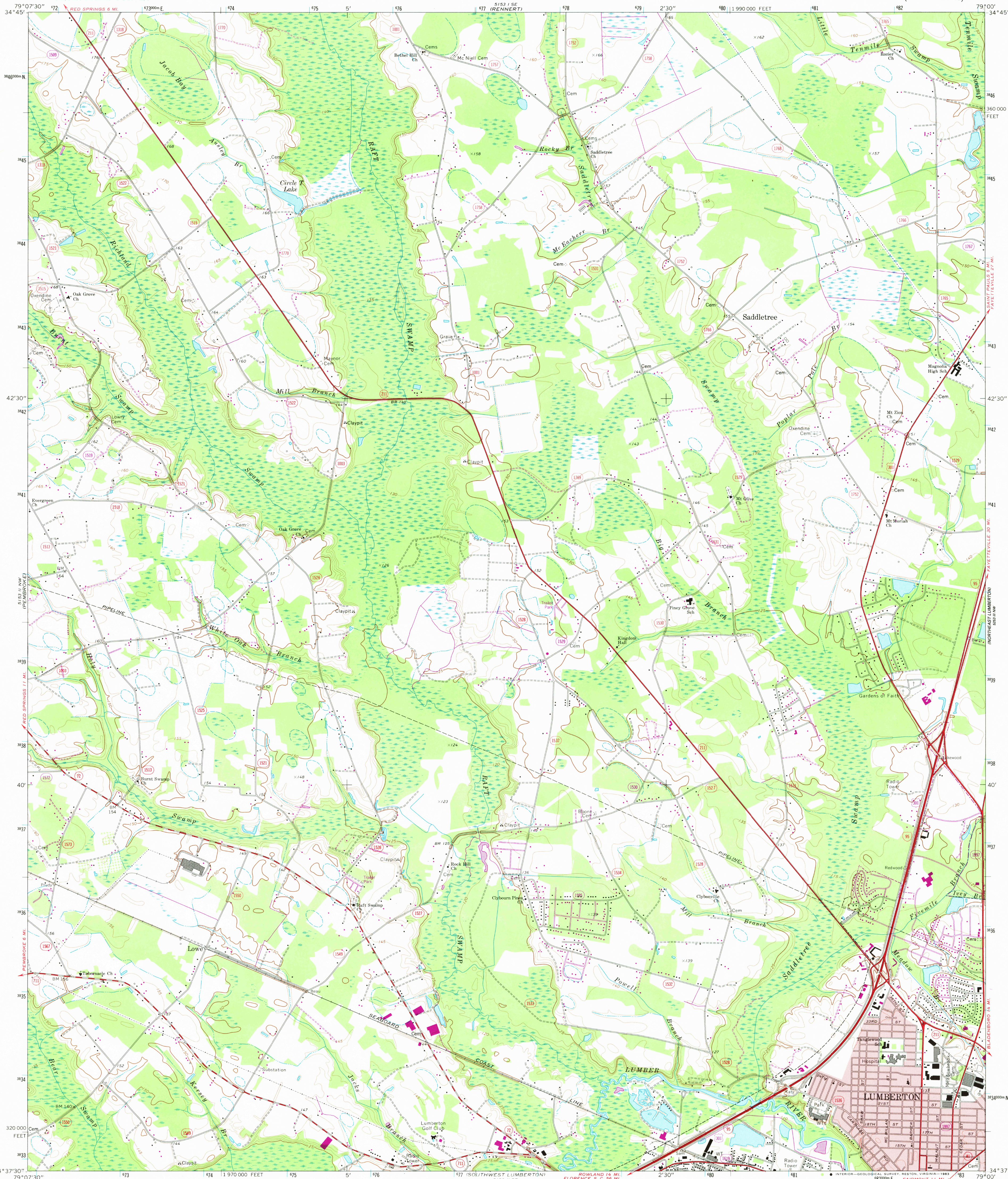
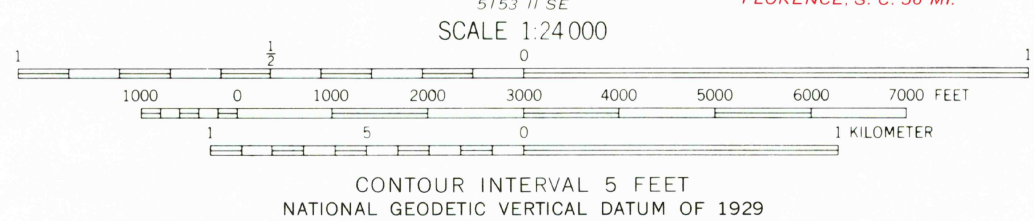
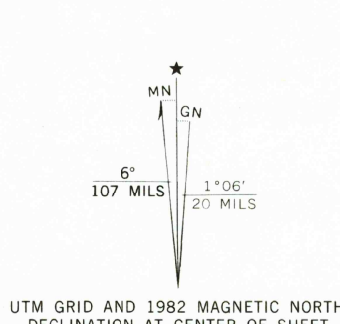


UNITED STATES
DEPARTMENT OF THE INTERIOR
GEOLOGICAL SURVEY

NORTHWEST LUMBERTON QUADRANGLE
NORTH CAROLINA—ROBESON CO.
7.5 MINUTE SERIES (TOPOGRAPHIC)



Mapped, edited, and published by the Geological Survey
Control by USGS, NOS/NOAA, and North Carolina Geodetic Survey
Topography by photogrammetric methods from aerial
photographs taken 1971. Field checked 1972
Projection and 10,000-foot grid ticks: North Carolina coordinate
system (Lambert conformal conic)
1000-meter Universal Transverse Mercator grid ticks,
zone 17, shown in blue. 1927 North American Datum. To place
on the predicted North American Datum 1983 move
the projection lines 13 meters south and 22 meters west
as shown by dashed corner ticks
Short dashed blue lines indicate elliptical bay outlines
visible on aerial photographs
Red tint indicates areas in which only landmark buildings are shown
Revisions shown in purple and woodland compiled in cooperation
with State of North Carolina agencies from aerial photographs taken
1981 and other sources. This information not field checked
Map edited 1982



THIS MAP COMPLIES WITH NATIONAL MAP ACCURACY STANDARDS
FOR SALE BY U. S. GEOLOGICAL SURVEY, RESTON, VIRGINIA 22092
A FOLDER DESCRIBING TOPOGRAPHIC MAPS AND SYMBOLS IS AVAILABLE ON REQUEST

RETURN TO:
NMD HISTORICAL MAP ARCHIVES
USGS NATIONAL CENTER, MS-522
RESTON, VA 22092



ROAD CLASSIFICATION
Primary highway, hard surface
Secondary highway, hard surface
Unimproved road
Light duty road, hard or improved surface
Interstate Route
U. S. Route
State Route

NORTHWEST LUMBERTON, N. C.
N3437.5—W7900/7.5

1972
PHOTOREVISED 1982
DMA 513 I NE—SERIES V842