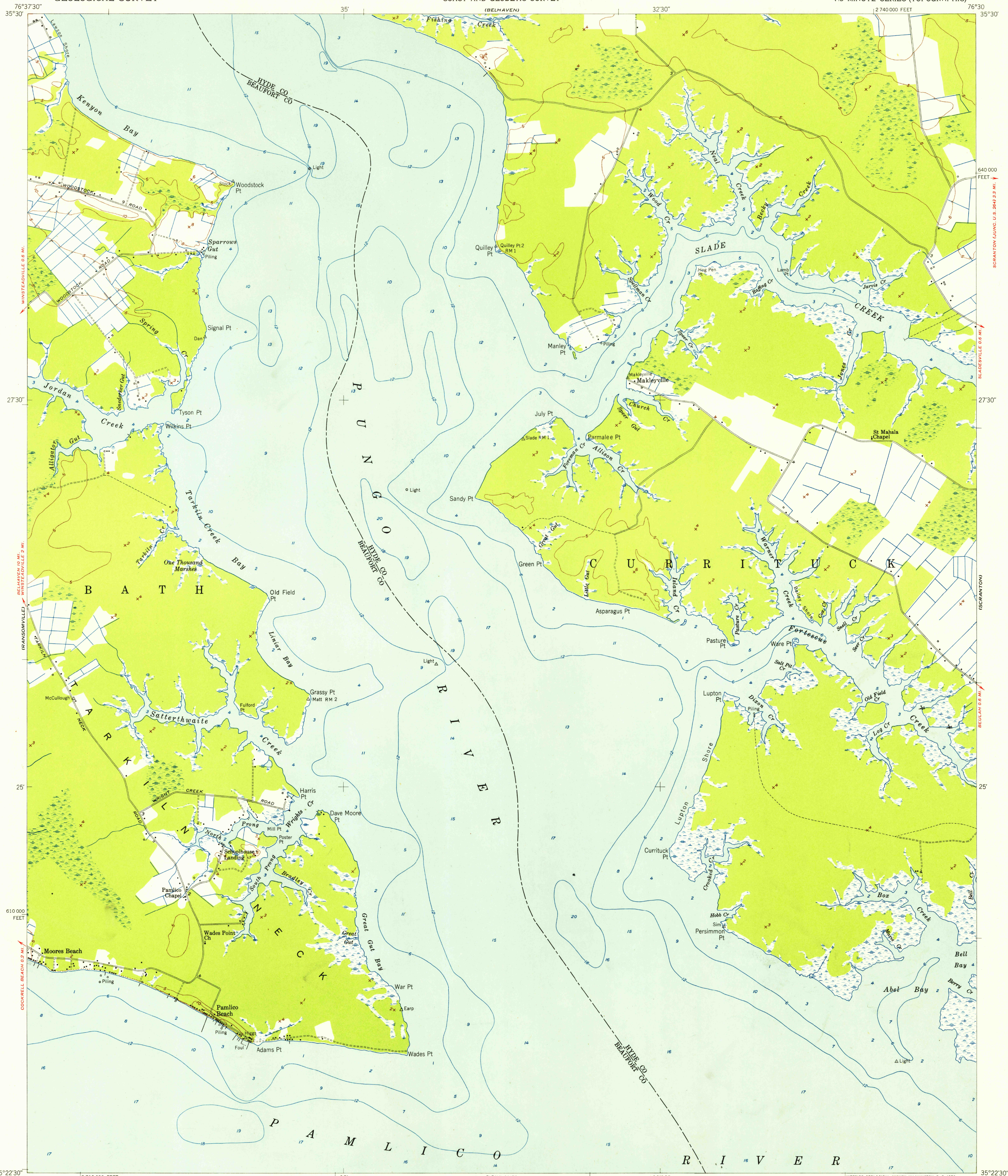
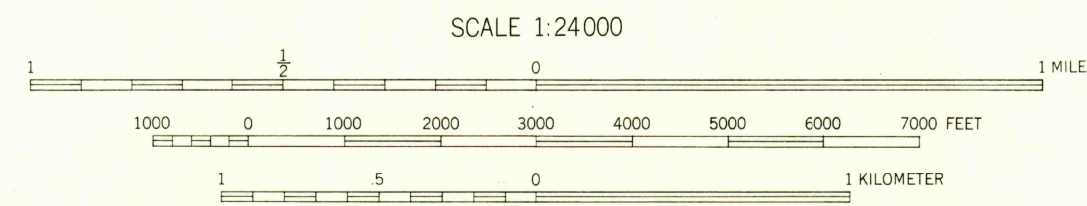
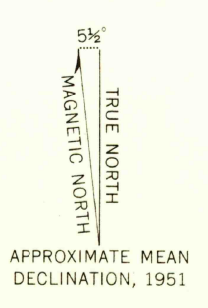


FILE COPY
Inspection and Editing



Maped by the U. S. Coast and Geodetic Survey
Edited and published by the Geological Survey
Control by USC&GS
Culture and drainage in part compiled from
aerial photographs taken 1948
Topography by plane-table surveys 1949. Field check 1951
Hydrography from surveys dated 1935 and supplementary
information
Polyconic projection. 1927 North American datum
10,000-foot grid based on North Carolina coordinate system



CONTOUR INTERVAL 5 FEET
DATUM IS MEAN SEA LEVEL
DEPTH CURVES AND SOUNDINGS IN FEET-DATUM IS MEAN LOW WATER
SHORELINE SHOWN REPRESENTS THE APPROXIMATE LINE OF MEAN HIGH WATER
THE MEAN RANGE OF TIDE IS LESS THAN 4 FOOT
THIS MAP COMPLIES WITH NATIONAL MAP ACCURACY STANDARDS
FOR SALE BY U. S. GEOLOGICAL SURVEY, WASHINGTON 25, D. C.
A FOLDER DESCRIBING TOPOGRAPHIC MAPS AND SYMBOLS IS AVAILABLE ON REQUEST

USGS
Historical File
Topographic Division

ROAD CLASSIFICATION USC&GS T-8981

Heavy-duty	4 LANE 16 LANE	Light-duty	2 LANE 16 LANE
Medium-duty	4 LANE 16 LANE	Unimproved dirt	2 LANE 16 LANE
U. S. Route		State Route	



U.S.G.S
FILE COPY
Inspection and Editing

PAMLICO BEACH, N. C.
N3522.5-W7630/7.5
1951

APR 27 1953