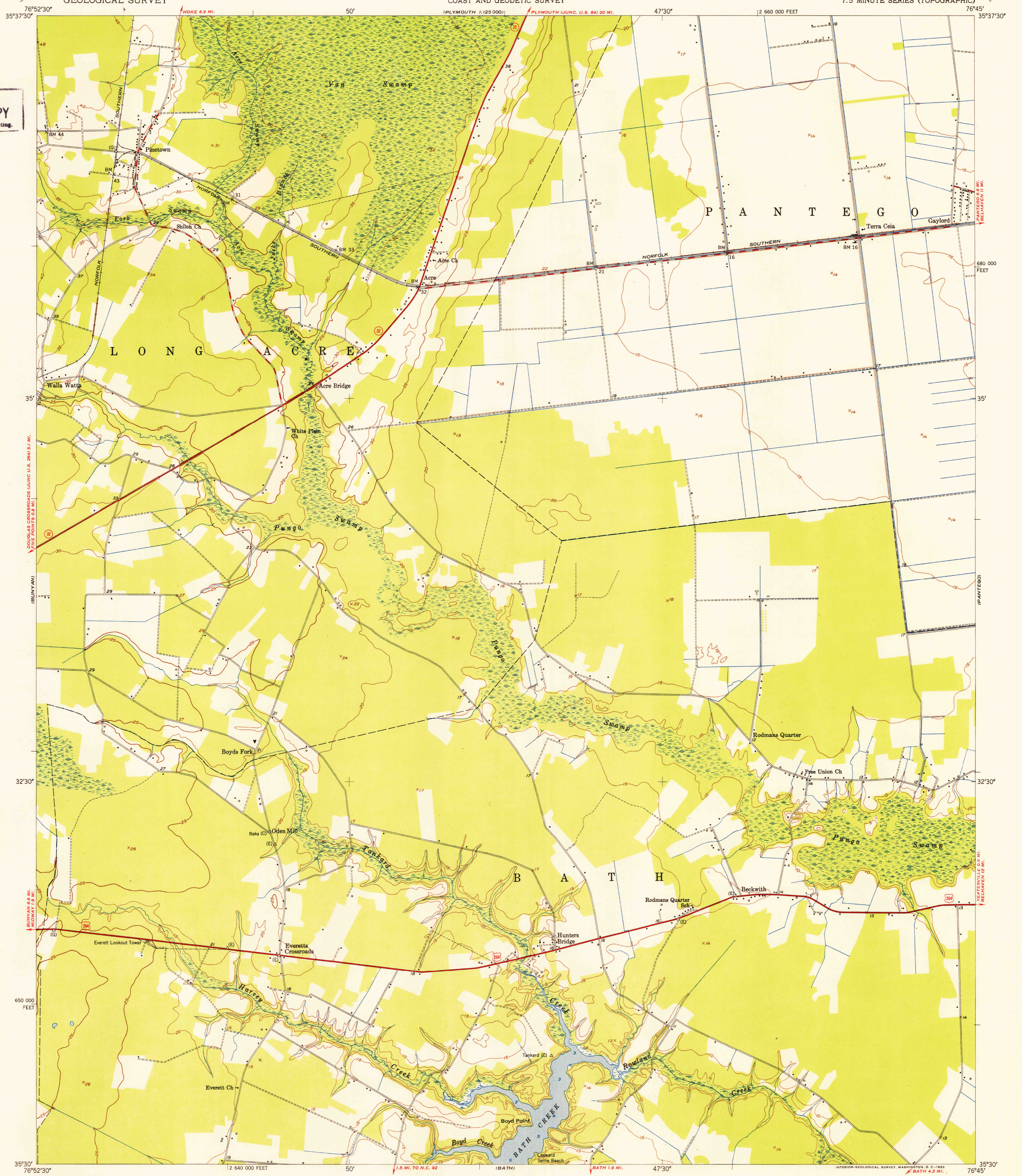
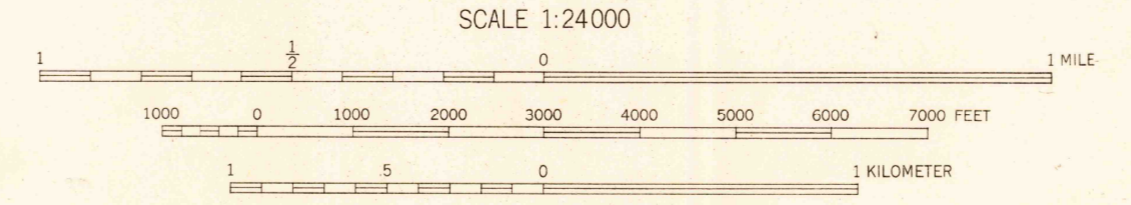


U.S.G.S.  
FILE COPY  
Inspection and Editing.



Mapped by the U.S. Coast & Geodetic Survey  
Edited and published by the Geological Survey  
Control by USGS (G), USCG&S (C), and USCE (E)  
Culture and drainage in part compiled from  
aerial photographs taken 1948  
Topography by plane-table methods 1949. Field check 1950  
Hydrography from surveys dated 1948 and supplementary information  
Polyconic projection. 1927 North American datum  
10,000-foot grid based on North Carolina coordinate system



CONTOUR INTERVAL 5 FEET  
DATUM IS MEAN SEA LEVEL  
SOUNDINGS IN FEET-DATUM IS MEAN LOW WATER  
SHORELINE SHOWN REPRESENTS THE APPROXIMATE LINE OF MEAN HIGH WATER  
THE MEAN RANGE OF TIDE IS LESS THAN 3/4 FOOT  
THIS MAP COMPLIES WITH NATIONAL MAP ACCURACY STANDARDS  
FOR SALE BY U. S. GEOLOGICAL SURVEY, WASHINGTON 25, D. C.  
A FOLDER DESCRIBING TOPOGRAPHIC MAPS AND SYMBOLS IS AVAILABLE ON REQUEST

ROAD CLASSIFICATION  
Heavy-duty — 4 LANE 16 LANE Light-duty —  
Medium-duty — 4 LANE 16 LANE Unimproved dirt —  
U. S. Route State Route

HISTORICAL  
U.S.G.S.  
FILE COPY  
Inspection and Editing.

PINETOWN, N. C.  
N3530-W7645/7.5  
1950