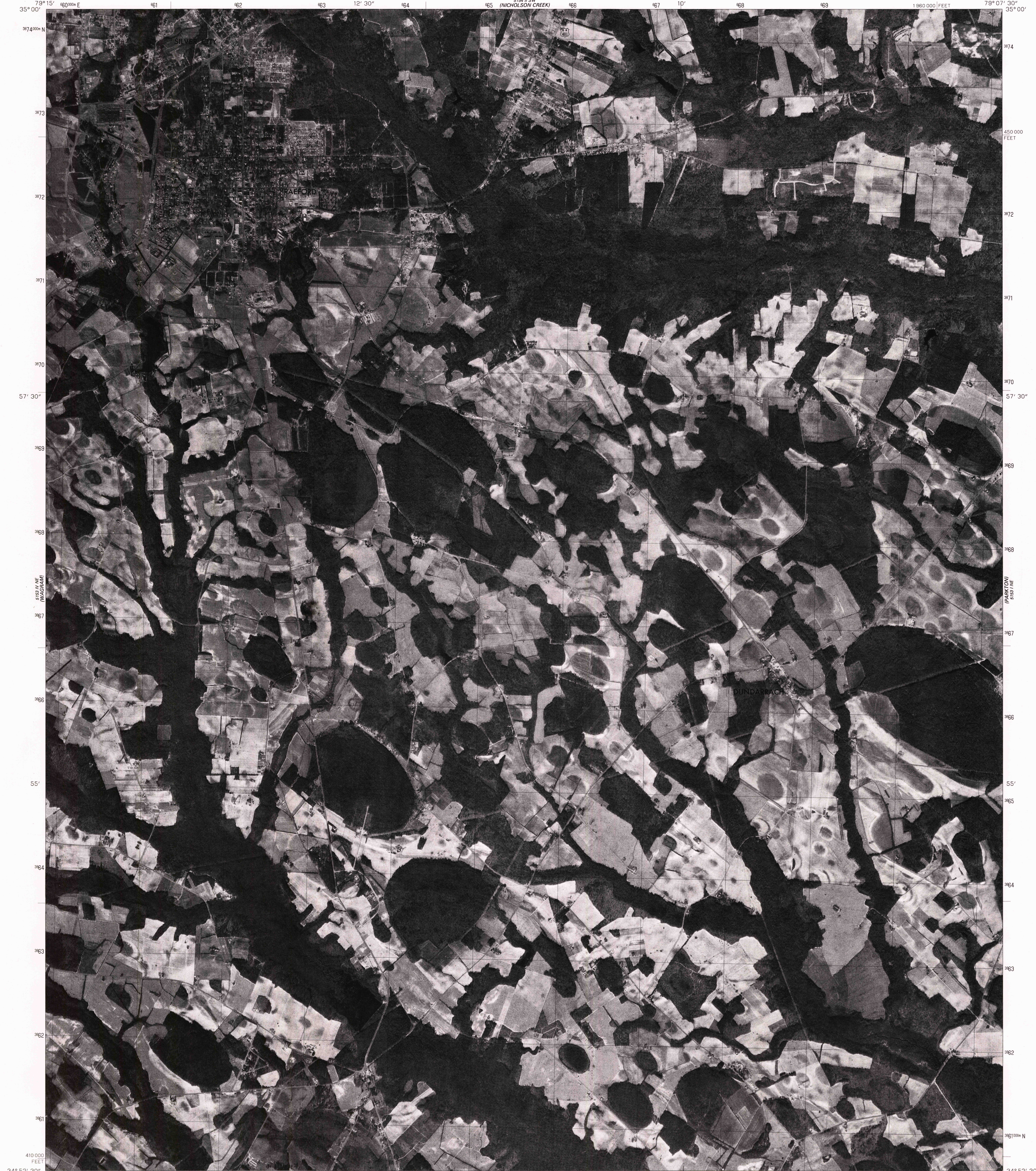
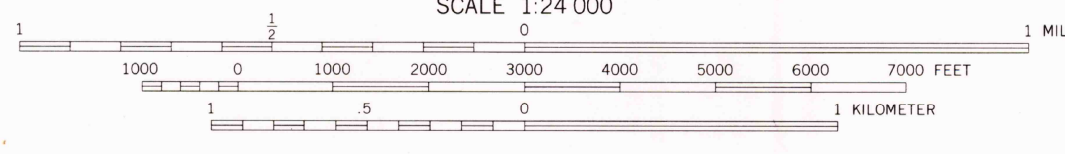
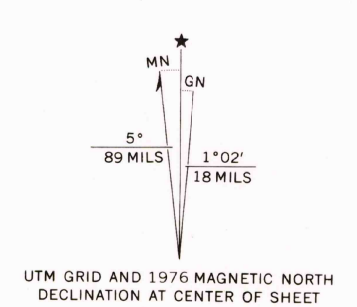


UNITED STATES
DEPARTMENT OF THE INTERIOR
GEOLOGICAL SURVEY

RAEFORD QUADRANGLE
NORTH CAROLINA
7.5 MINUTE SERIES ORTHOPHOTOQUAD



Produced by the Geological Survey
in cooperation with the Soil Conservation Service
Orthophotograph prepared from 1:80,000-scale
aerial photograph taken January 15, 1976
Projection and 10,000-foot grid ticks: North Carolina coordinate
system, (Lambert conformal conic)
1000-meter Universal Transverse Mercator grid,
zone 17, 1927 North American datum
Photomagey rectified by optical scanning
which may produce double or mismatched images;
use the mean of image positions for map point



PRINCIPAL NUMBERED HIGHWAYS
Interstate Route U.S. Route State Route



USGS
Historical File
Topographic Division

This quadrangle area also covered by
1:24,000-scale topographic map

RAEFORD, N. C.
N3452.5-W7907.5/7.5

FEB 21 1978

600

THIS MAP COMPLIES WITH NATIONAL MAP ACCURACY STANDARDS
FOR SALE BY U. S. GEOLOGICAL SURVEY, RESTON, VIRGINIA 22092

1976
AMS 5153 I NW—SERIES V042