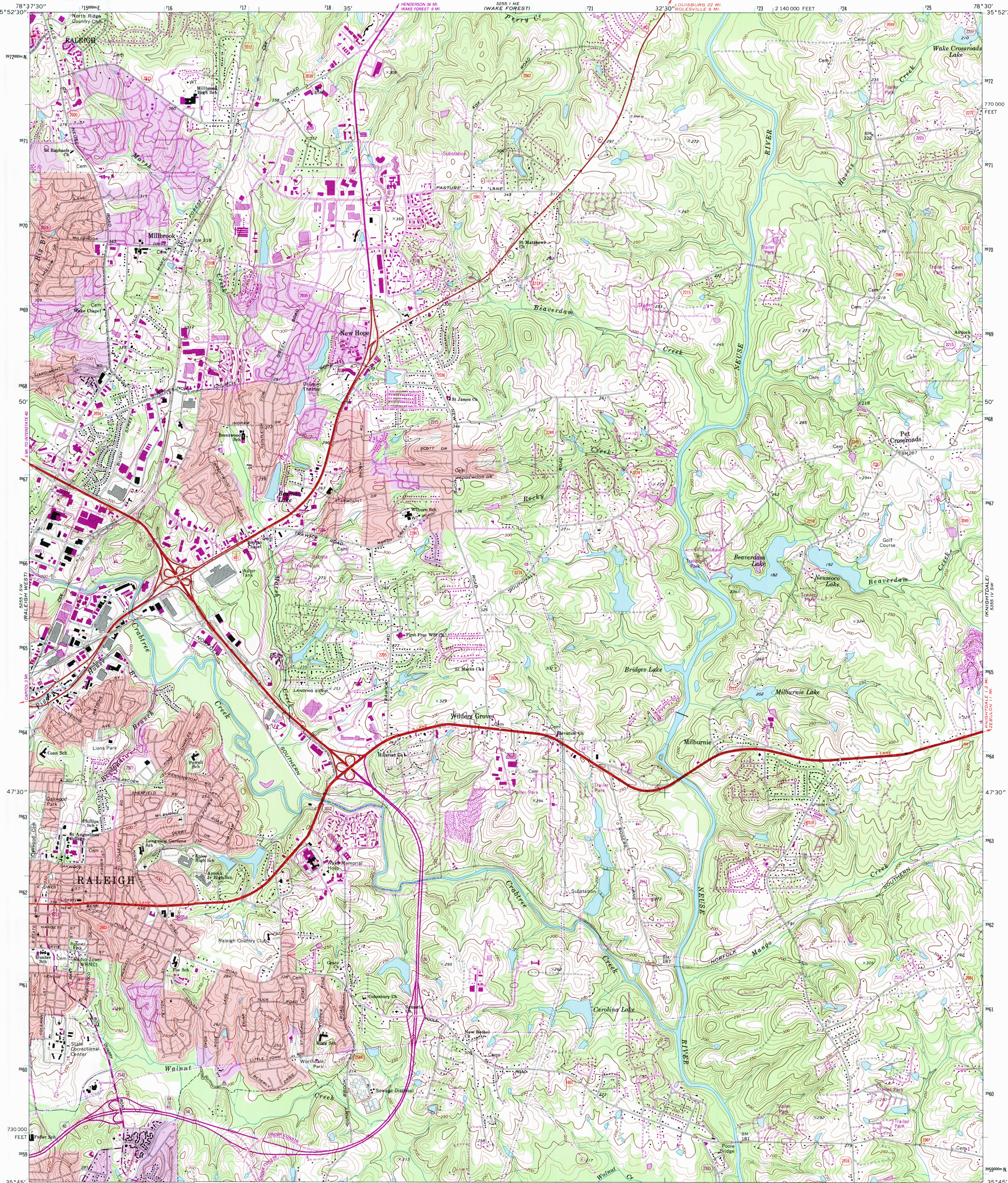


UNITED STATES  
DEPARTMENT OF THE INTERIOR  
GEOLOGICAL SURVEY

RALEIGH EAST QUADRANGLE  
NORTH CAROLINA—WAKE CO.  
7.5 MINUTE SERIES (TOPOGRAPHIC)  
SE/4 RALEIGH 15' QUADRANGLE



Mapped, edited, and published by the Geological Survey

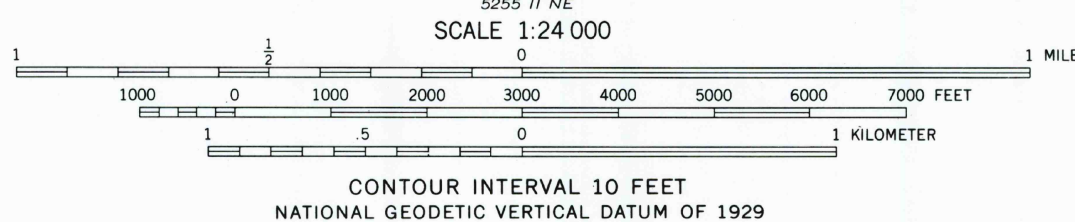
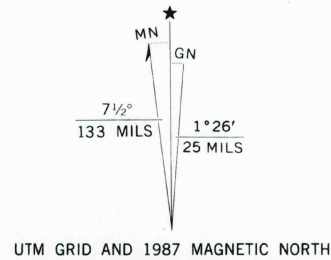
Control by USGS, NOS/NOAA, and North Carolina Geodetic Survey  
Topography by photogrammetric methods from aerial photographs  
taken 1965 and 1968. Field checked 1968

Polyconic projection. 10,000-foot grid ticks based on North  
Carolina coordinate system. 1000-meter Universal Transverse Mercator  
grid ticks, zone 17, shown in blue. 1927 North American Datum  
To place on the predicted North American Datum 1983 move the  
projection lines 12 meters south and 23 meters west as shown  
by dashed corner ticks

Red tint indicates areas in which only landmark buildings are shown

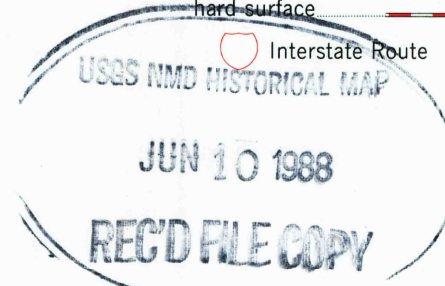
Revisions shown in purple and woodland compiled in  
cooperation with State of North Carolina agencies from  
aerial photographs taken 1984 and other sources. This  
information not field checked. Map edited 1987

Purple tint indicates extension of urban areas



THIS MAP COMPLIES WITH NATIONAL MAP ACCURACY STANDARDS  
FOR SALE BY U. S. GEOLOGICAL SURVEY  
DENVER, COLORADO 80225, OR RESTON, VIRGINIA 22092  
A FOLDER DESCRIBING TOPOGRAPHIC MAPS AND SYMBOLS IS AVAILABLE ON REQUEST

ROAD CLASSIFICATION  
Primary highway, hard surface  
Secondary highway, hard surface  
Unimproved road  
Light-duty road, hard or improved surface  
U. S. Route  
State Route



RALEIGH EAST, N. C.  
SE/4 RALEIGH 15' QUADRANGLE  
35078-G5-TF-024

1968  
PHOTOREVISED 1987  
DMA 5255 1 SE—SERIES V842