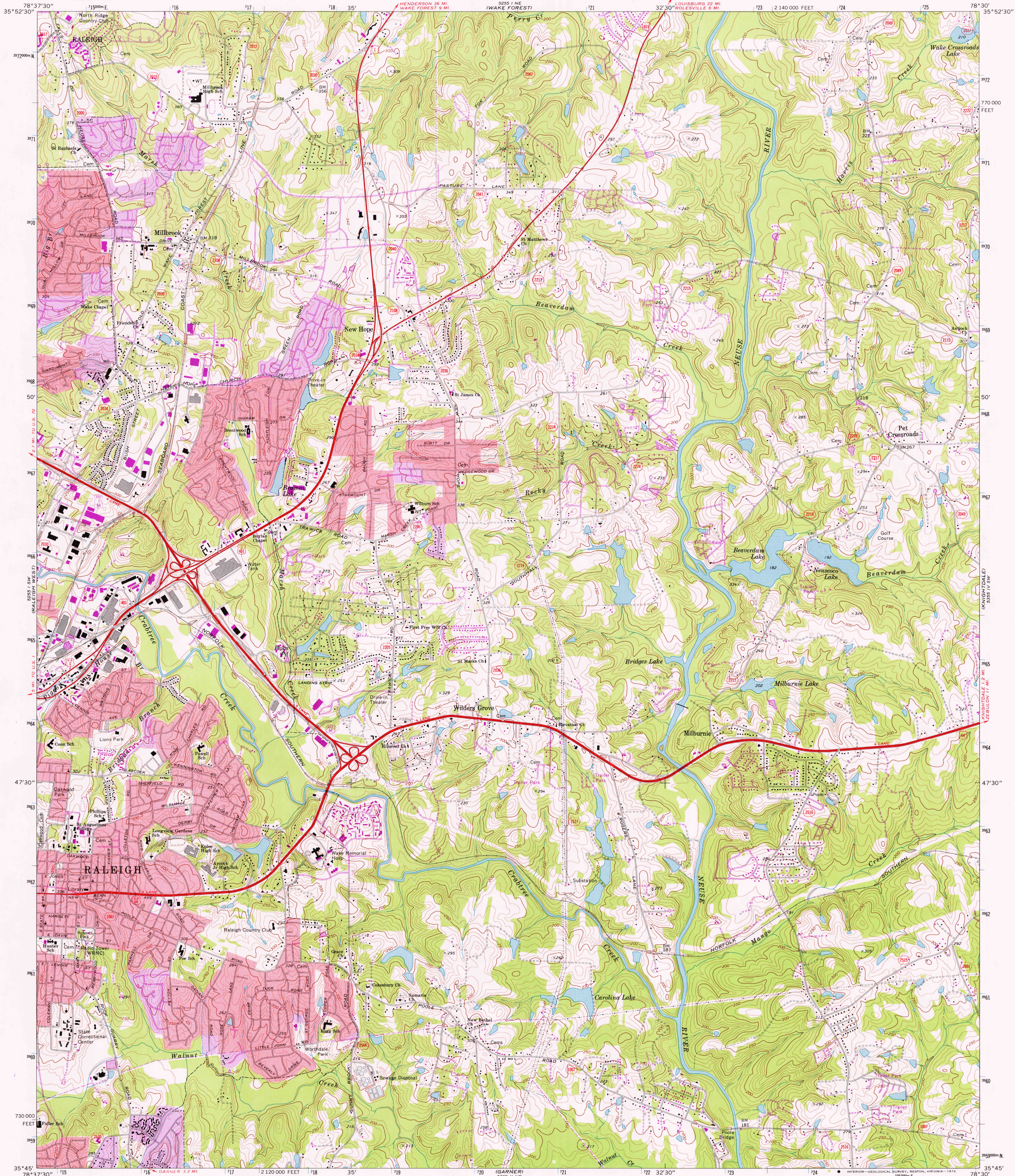
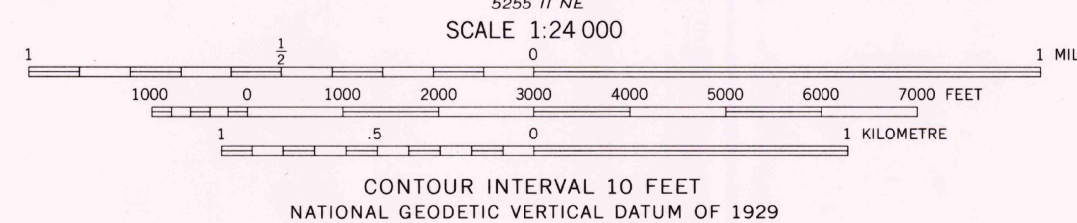
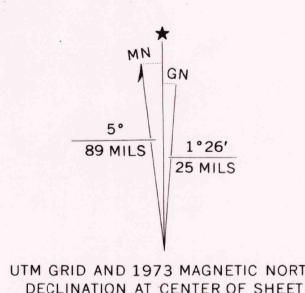


UNITED STATES  
DEPARTMENT OF THE INTERIOR  
GEOLOGICAL SURVEY

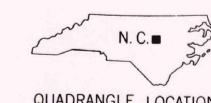
RALEIGH EAST QUADRANGLE  
NORTH CAROLINA—WAKE CO.  
7.5 MINUTE SERIES (TOPOGRAPHIC)  
SE 1/4 RALEIGH 15' QUADRANGLE



Mapped, edited, and published by the Geological Survey  
Control by USGS, USC&GS, and North Carolina Geodetic Survey  
Topography by photogrammetric methods from aerial  
photographs taken 1965 and 1968. Field checked 1968  
Polyconic projection. 1927 North American datum  
10,000-foot grid based on North Carolina coordinate system  
1000-metre Universal Transverse Mercator grid ticks,  
zone 17, shown in blue  
Red tint indicates areas in which only landmark buildings are shown  
Revisions shown in purple compiled from aerial  
photographs taken 1973. This information not  
field checked  
Purple tint indicates extension of urban areas



ROAD CLASSIFICATION  
Primary highway, hard surface ——— Light-duty road, hard or improved surface ———  
Secondary highway, hard surface ——— Unimproved road ———  
Interstate Route ——— U. S. Route ——— State Route ———



RALEIGH EAST, N. C.  
SE 1/4 RALEIGH 15' QUADRANGLE  
N 3545—W 7830/7.5

USGS  
HISTORICAL FILE  
TOPOGRAPHIC DIVISION

1968  
PHOTOREVISED 1973  
AMS 5255 I SE—SERIES V842

MAR 0 5 1976

THIS MAP COMPLIES WITH NATIONAL MAP ACCURACY STANDARDS  
FOR SALE BY U. S. GEOLOGICAL SURVEY, RESTON, VIRGINIA 22092  
A FOLDER DESCRIBING TOPOGRAPHIC MAPS AND SYMBOLS IS AVAILABLE ON REQUEST