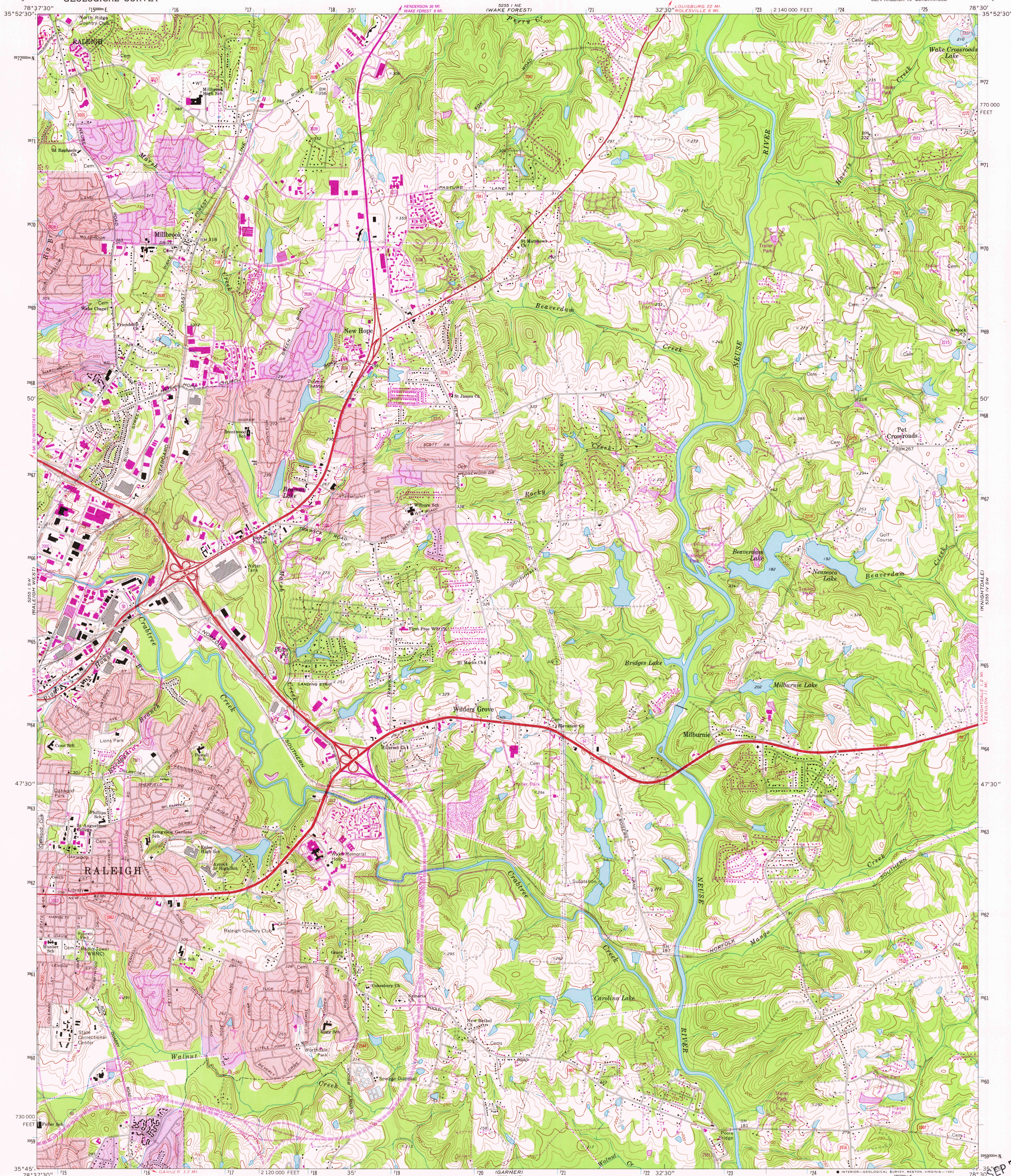


UNITED STATES
DEPARTMENT OF THE INTERIOR
GEOLOGICAL SURVEY

RALEIGH EAST QUADRANGLE
NORTH CAROLINA—WAKE CO.
7.5 MINUTE SERIES (TOPOGRAPHIC)
SE 1/4 RALEIGH 15' QUADRANGLE



Mapped, edited, and published by the Geological Survey

Control by USGS, NOS/NOAA, and North Carolina Geodetic Survey
Topography by photogrammetric methods from aerial photographs
taken 1965 and 1968. Field checked 1968

Polyconic projection. 10,000-foot grid ticks based on North
Carolina coordinate system. 1000-meter Universal Transverse Mercator
grid ticks, zone 17, shown in blue. 1927 North American Datum
To place on the predicted North American Datum 1983 move the
projection lines 12 meters south and 23 meters west as shown
by dashed corner ticks

Red tint indicates areas in which only landmark buildings are shown
Revisions shown in purple and woodland compiled in
cooperation with State of North Carolina agencies from
aerial photographs taken 1980 and other sources. This
information not field checked. Map edited 1981

Purple tint indicates extension of urban areas

UTM GRID AND 1981 MAGNETIC NORTH
DECLINATION AT CENTER OF SHEET

SCALE 1:24 000
1 000 2000 3000 4000 5000 6000 7000 FEET
1 KILOMETER
CONTOUR INTERVAL 10 FEET
NATIONAL GEODETIC VERTICAL DATUM OF 1929

THIS MAP COMPLIES WITH NATIONAL MAP ACCURACY STANDARDS
FOR SALE BY U. S. GEOLOGICAL SURVEY, RESTON, VIRGINIA 22092
A FOLDER DESCRIBING TOPOGRAPHIC MAPS AND SYMBOLS IS AVAILABLE ON REQUEST

ROAD CLASSIFICATION
Primary highway, hard surface ——— Light-duty road, hard or improved surface ———
Secondary highway, hard surface ——— Unimproved road ———
Interstate Route ——— U. S. Route ——— State Route ———



QUADRANGLE LOCATION

RALEIGH EAST, N. C.
SE 1/4 RALEIGH 15' QUADRANGLE
N 3545—W 7830/7.5

RETURN TO:
USGS NMD HISTORICAL MAP ARCHIVES

1968
PHOTOREVISED 1981
DMA 5255 I SE—SERIES V842

SEP 7 1982