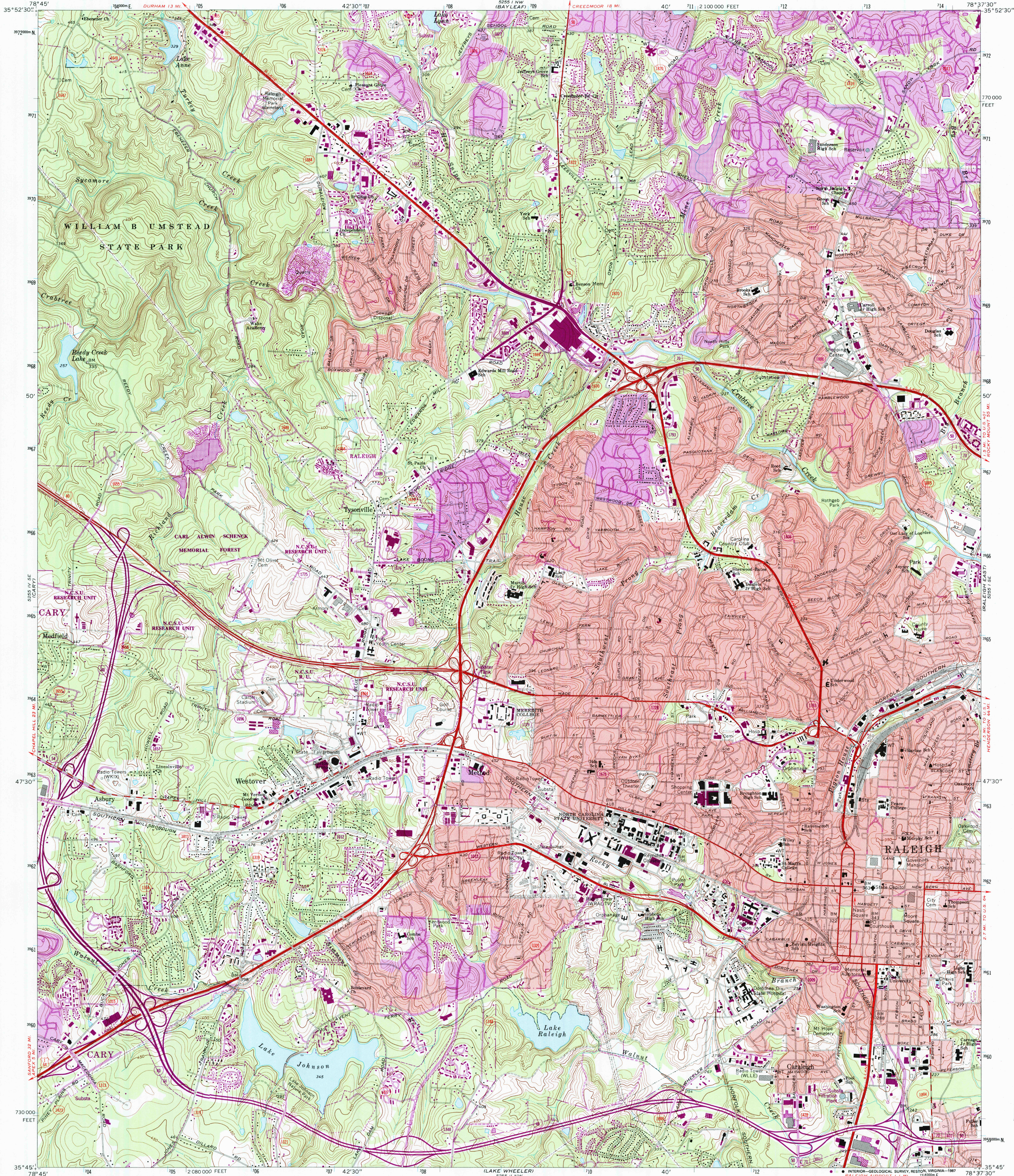
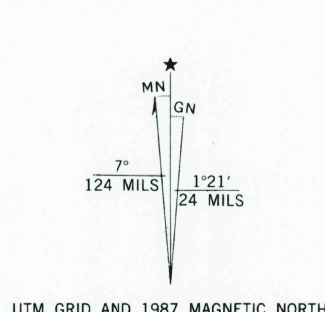


UNITED STATES  
DEPARTMENT OF THE INTERIOR  
GEOLOGICAL SURVEY

RALEIGH WEST QUADRANGLE  
NORTH CAROLINA—WAKE CO.  
7.5 MINUTE SERIES (TOPOGRAPHIC)  
SW/4 RALEIGH 15' QUADRANGLE



Mapped, edited, and published by the Geological Survey  
Control by USGS, NOS/NOAA, and North Carolina Geodetic Survey  
Topography by photogrammetric methods from aerial photographs  
taken 1965 and 1968. Field checked 1968  
Polyconic projection. 10,000-foot grid ticks based on North Carolina  
coordinate system. 1000-meter Universal Transverse Mercator grid  
ticks, zone 17, shown in blue. 1927 North American Datum  
To place on the predicted North American Datum 1983 move  
the projection lines 12 meters south and 23 meters west  
as shown by dashed corner ticks  
Red tint indicates areas in which only landmark buildings are shown  
There may be private inholdings within the boundaries of  
the National or State reservations shown on this map



SCALE 1:24 000  
1 000 0 1000 2000 3000 4000 5000 6000 7000 FEET  
1 0 1 2 3 4 5 6 7 8 9 10 KILOMETER  
CONTOUR INTERVAL 10 FEET  
NATIONAL GEODETIC VERTICAL DATUM OF 1929

THIS MAP COMPLIES WITH NATIONAL MAP ACCURACY STANDARDS  
FOR SALE BY U.S. GEOLOGICAL SURVEY  
DENVER, COLORADO 80225 OR RESTON, VIRGINIA 22092  
A FOLDER DESCRIBING TOPOGRAPHIC MAPS AND SYMBOLS IS AVAILABLE ON REQUEST



Revisions shown in purple and woodland compiled in cooperation with  
State of North Carolina agencies from aerial photographs taken 1984  
and other sources. This information not field checked. Map edited 1987  
Purple tint indicates extension of urban areas

Primary highway, all weather, improved surface  
Secondary highway, all weather, hard surface  
Light-duty road, all weather, improved surface  
Unimproved road, fair or dry hard surface  
Interstate Route U.S. Route State Route

RALEIGH WEST, N. C.  
SW/4 RALEIGH 15' QUADRANGLE  
35078-G6-TF-024

1968  
PHOTOREVISED 1987  
DMA 5255 I SW-SERIES V842

RETURN TO:  
USGS AND HISTORICAL MAP ARCHIVES