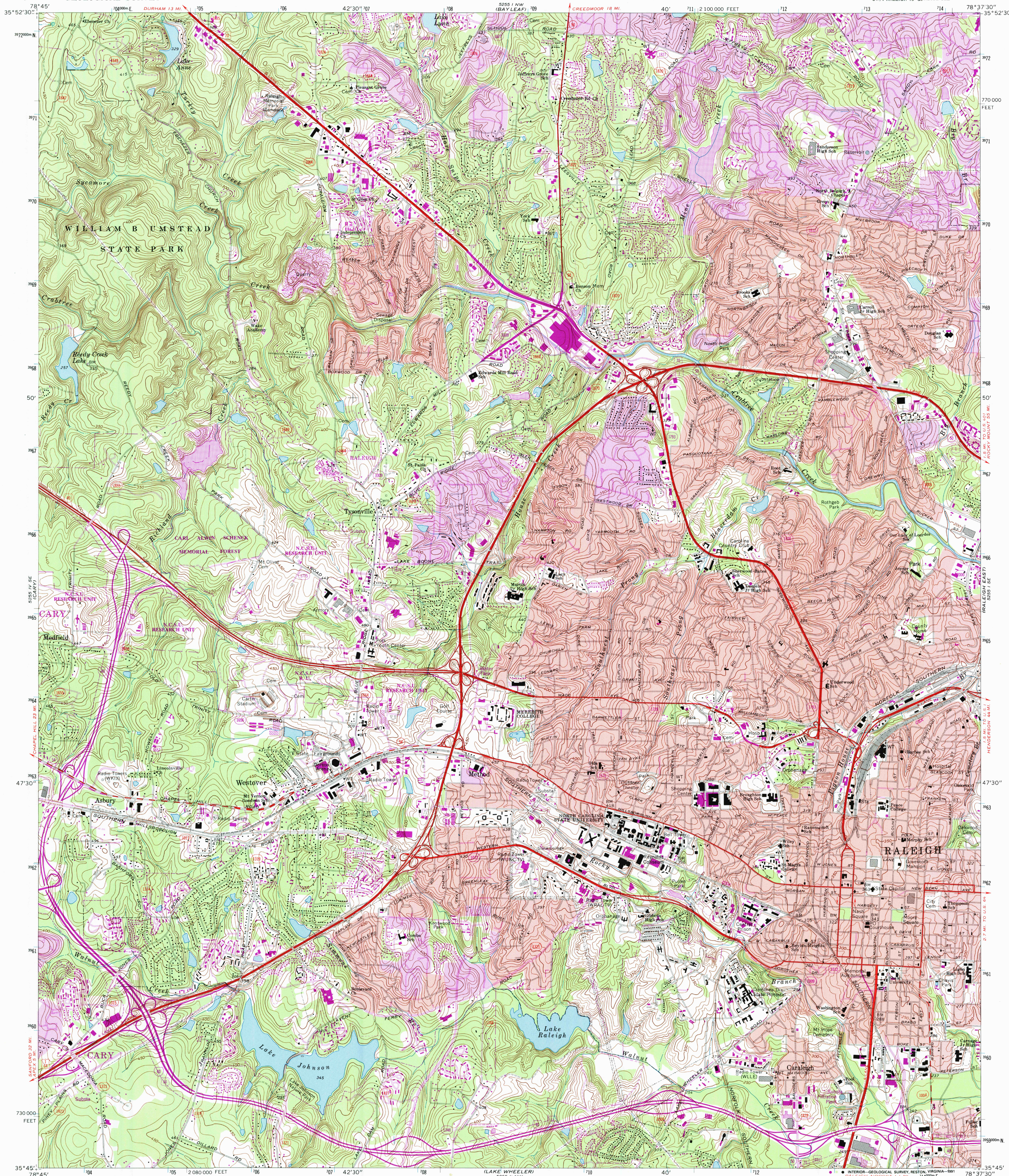


UNITED STATES
DEPARTMENT OF THE INTERIOR
GEOLOGICAL SURVEY

RALEIGH WEST QUADRANGLE
NORTH CAROLINA—WAKE CO.
7.5 MINUTE SERIES (TOPOGRAPHIC)
SW/4 RALEIGH 15' QUADRANGLE



Mapped, edited, and published by the Geological Survey

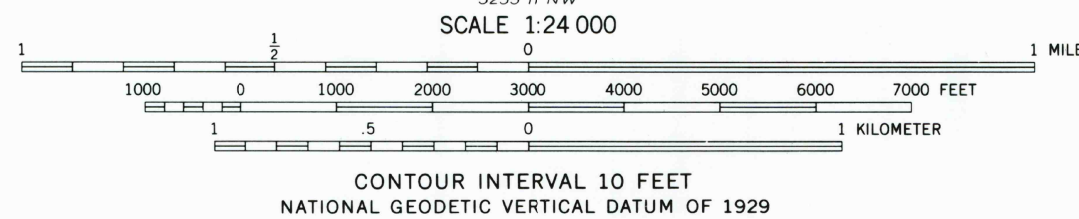
Control by USGS, NOS/NOAA, and North Carolina Geodetic Survey
Topography by photogrammetric methods from aerial photographs
taken 1965 and 1968. Field checked 1968

Polycyclic projection. 10,000-foot grid ticks based on North Carolina
coordinate system. 1000-meter Universal Transverse Mercator grid
ticks, zone 17, shown in blue. 1927 North American Datum
The difference between 1927 North American Datum and North
American Datum of 1983 (NAD 83) for 7.5-minute intersections
is given in USGS Bulletin 1875. The NAD 83 is shown by
dashed corner ticks

Red tint indicates areas in which only landmark buildings are shown
There may be private inholdings within the boundaries of
the National or State reservations shown on this map

UTM GRID AND 1987 MAGNETIC NORTH
DECLINATION AT CENTER OF SHEET

Map photorevised 1988
No major culture or drainage changes observed



THIS MAP COMPLIES WITH NATIONAL MAP ACCURACY STANDARDS
FOR SALE BY U. S. GEOLOGICAL SURVEY
DENVER, COLORADO 80225 OR RESTON, VIRGINIA 22092
A FOLDER DESCRIBING TOPOGRAPHIC MAPS AND SYMBOLS IS AVAILABLE ON REQUEST



QUADRANGLE LOCATION

Primary highway, all weather, hard surface
Secondary highway, all weather, hard surface
Light-duty road, all weather, improved surface
Unimproved road, fair or dry weather
Interstate Route
U. S. Route
State Route

RALEIGH WEST, N. C.
SW/4 RALEIGH 15' QUADRANGLE
35078-66-TF-024
PHOTOINSPECTED 1988
1968
PHOTOREVISED 1987
DMA 5255 1 SW—SERIES V842

Revisions shown in purple and woodland compiled in cooperation with
State of North Carolina agencies from aerial photographs taken 1984
and other sources. This information not field checked. Map edited 1987
Purple tint indicates extension of urban areas

