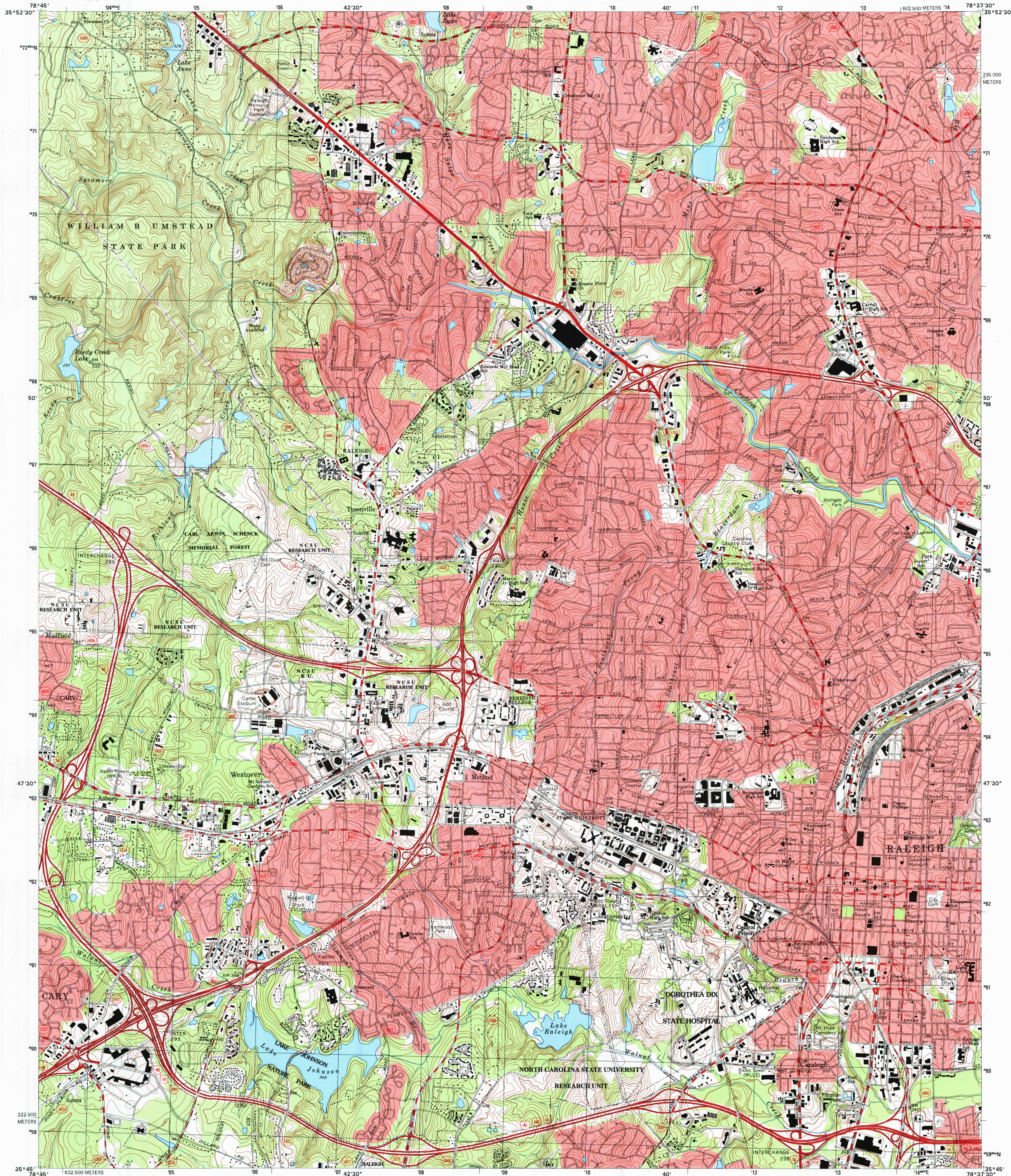




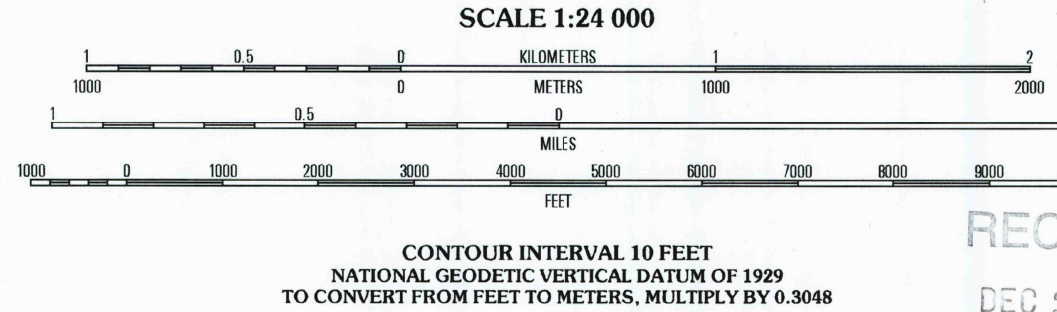
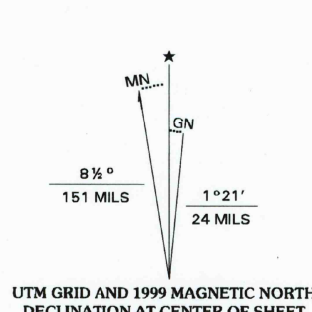
U.S. DEPARTMENT OF THE INTERIOR
U.S. GEOLOGICAL SURVEY



RALEIGH WEST QUADRANGLE
NORTH CAROLINA-WAKE CO.
7.5-MINUTE SERIES (TOPOGRAPHIC)



Produced by the United States Geological Survey
Topography compiled 1965. Planimetry derived from imagery taken 1993. Survey control current as of 1968.
North American Datum of 1983 (NAD 83). Projection and 1000-meter grid: Universal Transverse Mercator, zone 17. 2500-meter ticks: North Carolina Coordinate System of 1983.
North American Datum of 1927 (NAD 27) is shown by dashed corner ticks. The values of the shift between NAD 83 and NAD 27 for 7.5-minute intersections are obtainable from National Geodetic Survey NADCON software.
There may be private inholdings within the boundaries of the National or State reservations shown on this map.
Landmark buildings verified 1968.



ROAD CLASSIFICATION

Primary highway	Light-duty road, hard or improved surface
Secondary highway	Unimproved road

Interstate Route U.S. Route State Route

1	2	3
4	5	6
7	8	9

RALEIGH WEST, NC
1993
NIMA 5255 1 SW-SERIES V842

THIS MAP COMPLIES WITH NATIONAL MAP ACCURACY STANDARDS
FOR SALE BY U.S. GEOLOGICAL SURVEY, P.O. BOX 25286, DENVER, COLORADO 80225
A FOLDER DESCRIBING TOPOGRAPHIC MAPS AND SYMBOLS IS AVAILABLE ON REQUEST

ADJOINING 7.5' QUADRANGLE NAMES

1	2	3
4	5	6
7	8	9

1 Southeast Durham
2 Raleigh
3 Wake Forest
4 Cary
5 Raleigh East
6 Apex
7 Lake Wheeler
8 Garner