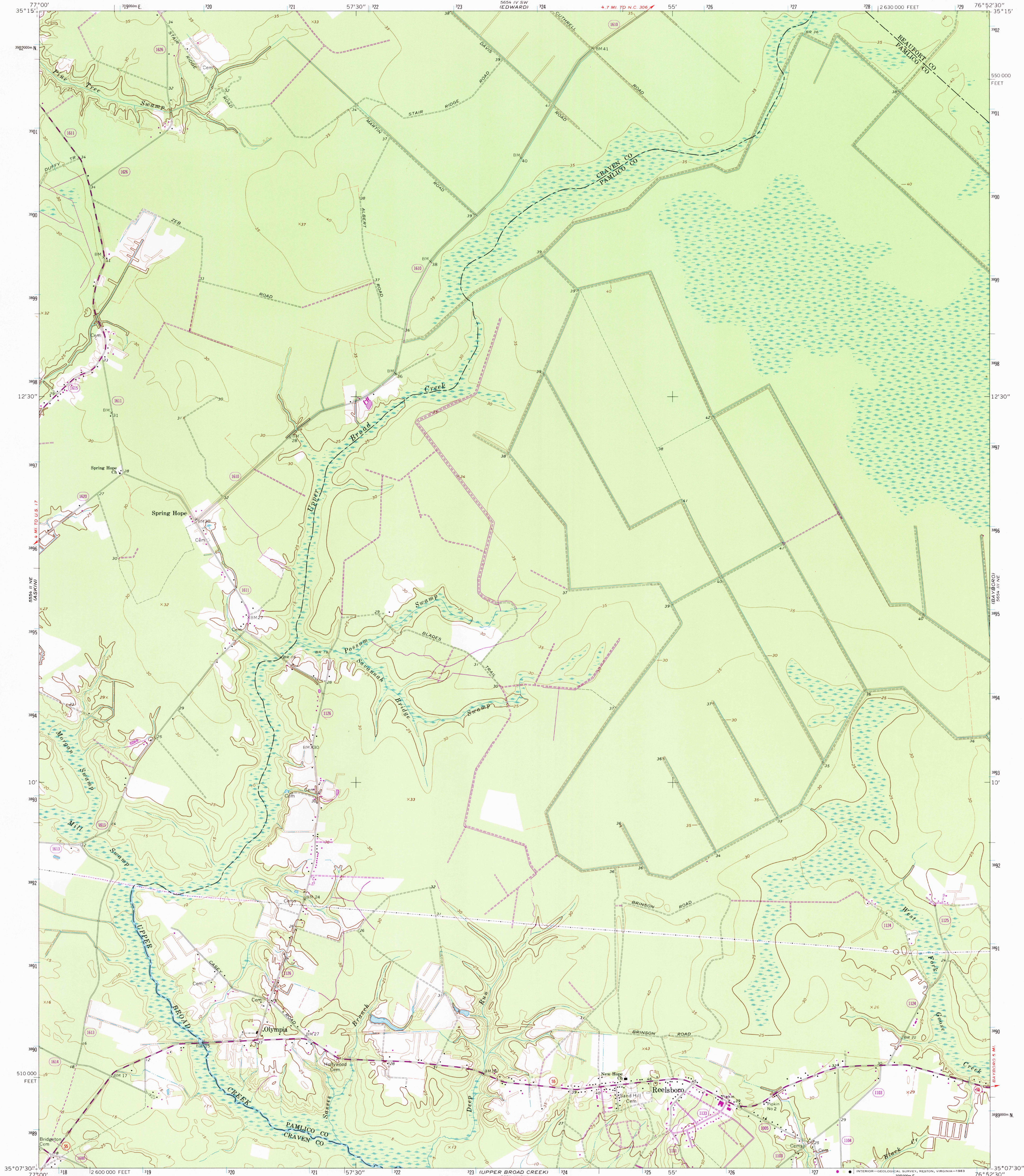


UNITED STATES
DEPARTMENT OF THE INTERIOR
GEOLOGICAL SURVEY

REELSBORO QUADRANGLE
NORTH CAROLINA
7.5 MINUTE SERIES (TOPOGRAPHIC)



Mapped, edited, and published by the Geological Survey
Control by USGS, NOS/NOAA, and USCE
Topography by photogrammetric methods from aerial
photographs taken 1964. Field checked 1969
Polyconic projection. 10,000-foot grid ticks based on North
Carolina coordinate system. 1000-meter Universal Transverse
Mercator grid ticks, zone 18, shown in blue
1927 North American Datum
To place on the predicted North American Datum
1983 move the projection lines 12 meters south
and 28 meters west as shown by dashed corner ticks
Fine red dashed lines indicate selected fence and field lines where
generally visible on aerial photographs. This information is unchecked

Revisions shown in purple and woodland compiled by the
Geological Survey in cooperation with State of North
Carolina agencies from aerial photographs taken 1980
and other sources
This information not field checked. Map edited 1983

THIS MAP COMPLIES WITH NATIONAL MAP ACCURACY STANDARDS
FOR SALE BY U. S. GEOLOGICAL SURVEY, RESTON, VIRGINIA 22092
A FOLDER DESCRIBING TOPOGRAPHIC MAPS AND SYMBOLS IS AVAILABLE ON REQUEST

ROAD CLASSIFICATION
Primary highway, all weather, hard surface
Light-duty road, all weather, improved surface
Unimproved road, fair or dry weather
State Route

REELSBORO, N. C.
35076-B8-TF-024
1969
PHOTOREVISED 1983
DMA 5854 III NW-SERIES V842

REVIEW TO:
THIS AND HISTORICAL MAP ARCHIVES