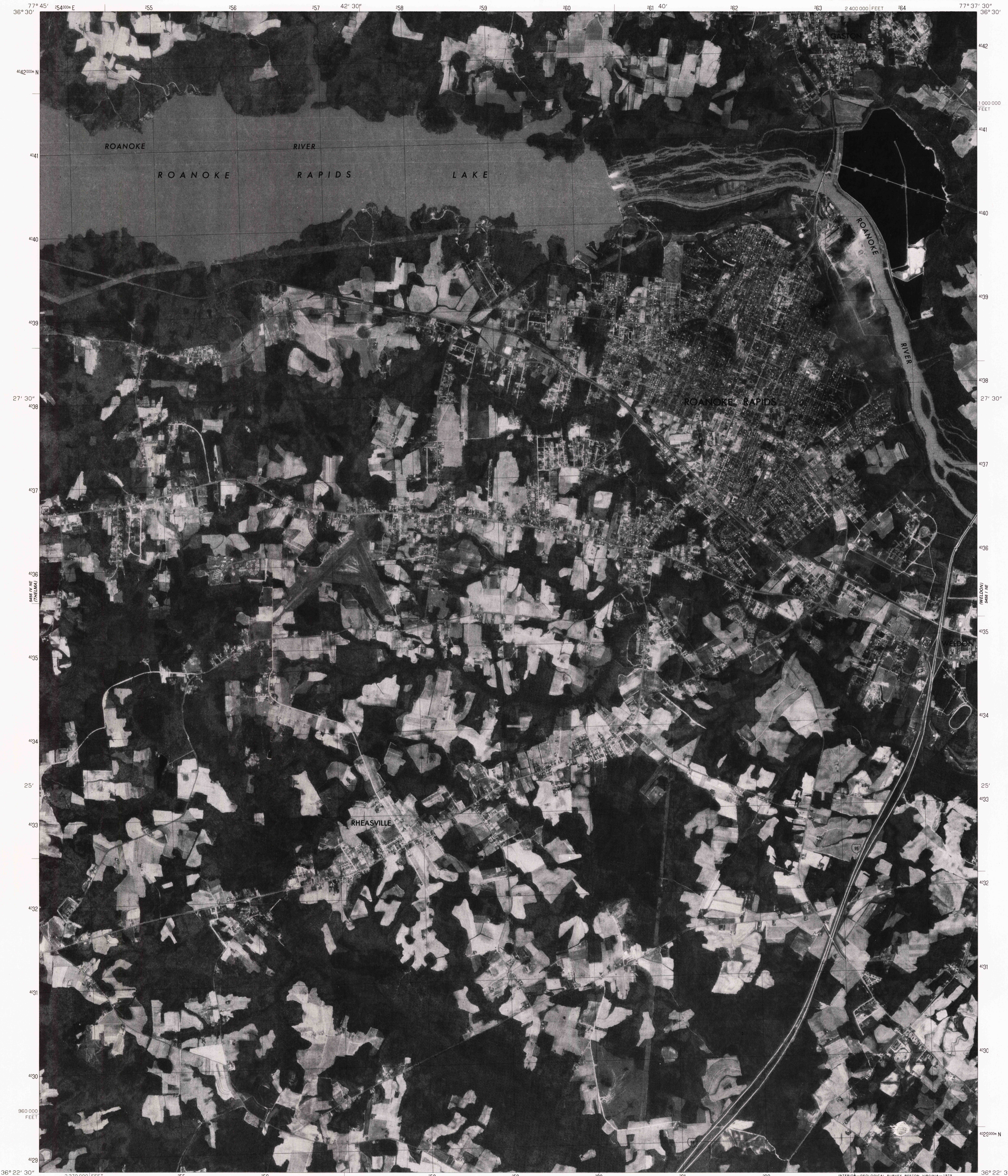


546 IV NE
1462000 N

UNITED STATES
DEPARTMENT OF THE INTERIOR
GEOLOGICAL SURVEY

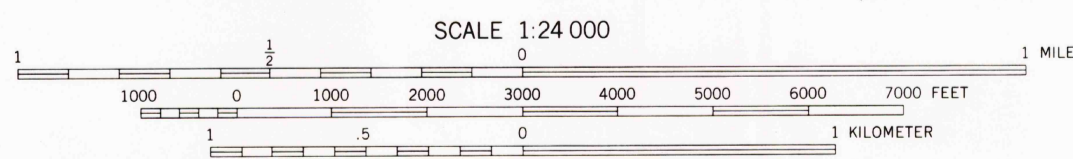
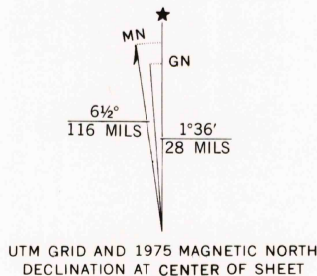
STATE OF NORTH CAROLINA
DEPARTMENT OF NATURAL AND ECONOMIC RESOURCES
RALEIGH, NORTH CAROLINA

ROANOKE RAPIDS QUADRANGLE
NORTH CAROLINA
7.5 MINUTE SERIES ORTHOPHOTOQUAD

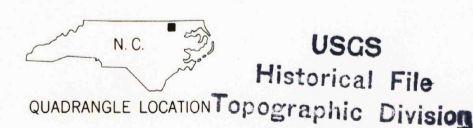


Produced and published by the Geological Survey

Orthophoto prepared from 1:80,000-scale aerial photograph taken April 9, 1975
Projection and 10,000-foot grid ticks: North Carolina coordinate system (Lambert conformal conic) 1000-meter Universal Transverse Mercator grid, zone 18. 1927 North American datum
Photoimagery rectified by optical scanning which may produce double or mismatched images; use the mean of image positions for map point



PRINCIPAL NUMBERED HIGHWAYS
Interstate Route U.S. Route State Route



ROANOKE RAPIDS, N. C.
N3622.5-W7737.5/7.5
1975

This quadrangle area also covered by 1:24,000-scale topographic map MAR 19 1978

THIS MAP COMPLIES WITH NATIONAL MAP ACCURACY STANDARDS FOR SALE BY U. S. GEOLOGICAL SURVEY, RESTON, VIRGINIA 22092

AMS 5456 I NW-SERIES V042