



Mapped, edited, and published by the Geological Survey

Control by NOS/NOAA, USGS, and TVA

Topography by USGS by photogrammetric methods
Map field checked by TVA, 1943 and 1945

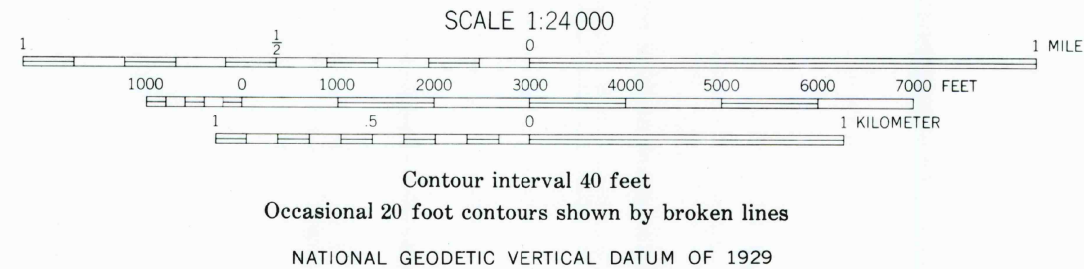
Polyconic projection. 1927 North American datum
10,000-foot grid based on North Carolina rectangular
coordinate system

1000 meter Universal Transverse Mercator Grid ticks,
Zone 17, shown in blue

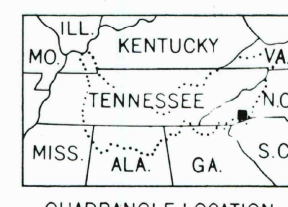
To place on the predicted North American Datum 1983
move the projection lines 9 meters south and
12 meters west as shown by dashed corner ticks

There may be private inholdings within the boundaries of
the National or State reservations shown on this map

UTM GRID and 1990 MAGNETIC NORTH
DECLINATION AT CENTER OF SHEET
Revisions shown in purple and woodland compiled from
aerial photographs taken 1988 and other sources. This
information not field checked. Map edited 1990
Fine purple dashed lines indicate selected fence and field
lines generally visible on aerial photographs. This
information is unchecked

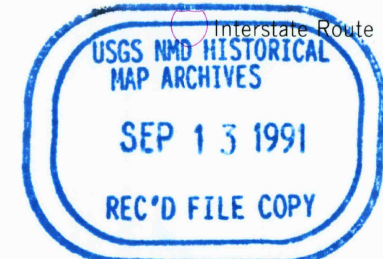


FOR SALE BY U.S. GEOLOGICAL SURVEY, DENVER, COLORADO 80225, OR RESTON, VIRGINIA 22092
AND U.S. TENNESSEE VALLEY AUTHORITY, CHATTANOOGA, TENN. 37402
A FOLDER DESCRIBING TOPOGRAPHIC MAPS AND SYMBOLS IS AVAILABLE ON REQUEST



QUADRANGLE LOCATION

ROAD CLASSIFICATION
Primary highway, hard surface
Secondary highway, hard surface
Unimproved road
Light-duty road, hard or improved surface
U.S. Route
State Route



ROSMAN, N. C.
35082-B7-TF-024

1945
PHOTOREVISED 1990
DMA 4454 III NE - SERIES V842