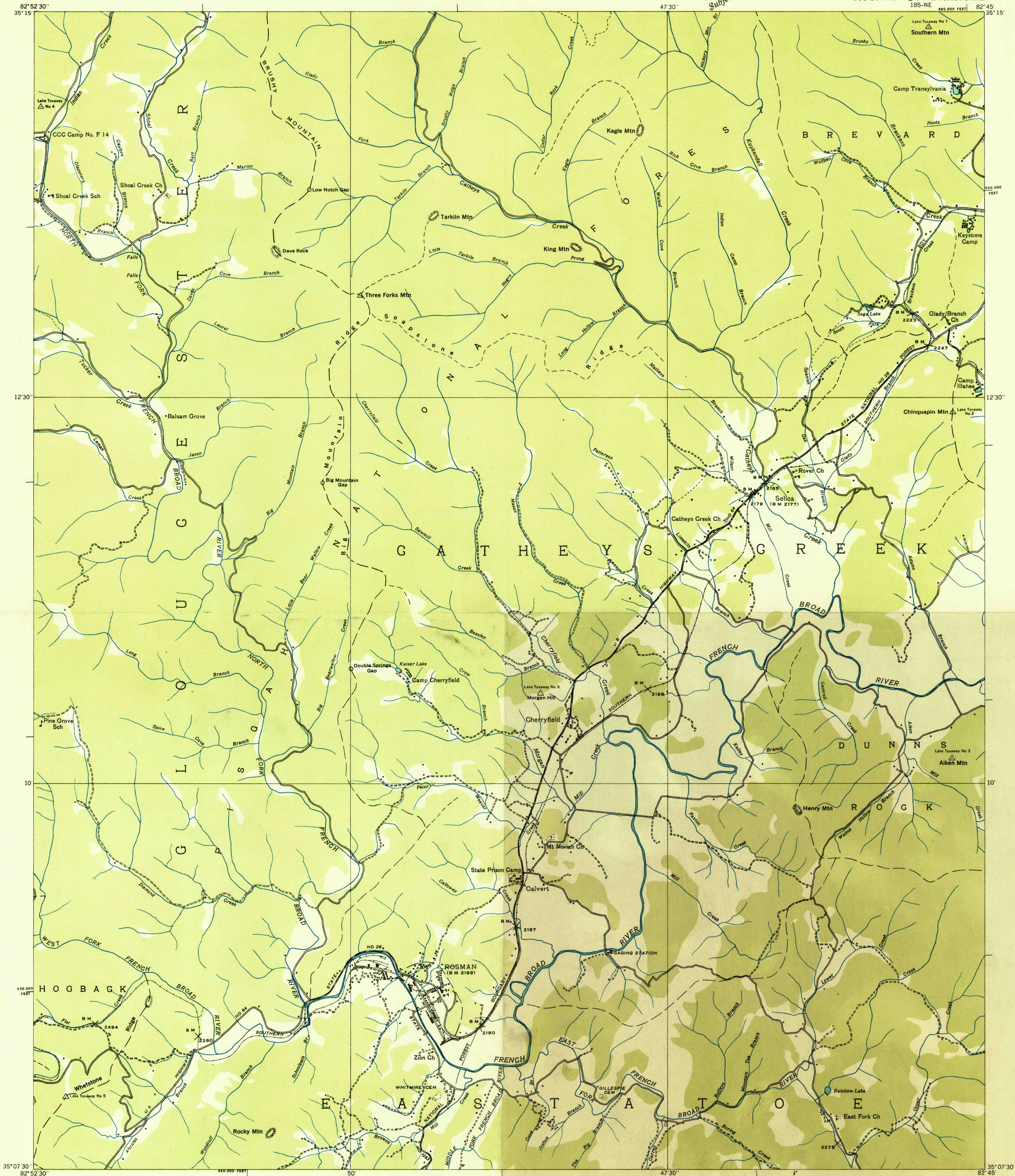
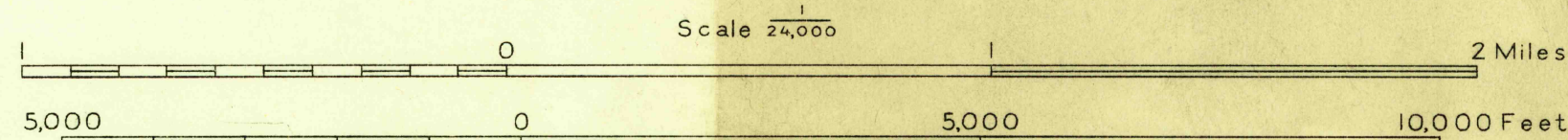


Advance sheet  
Subject to correction



Albert Pike, Division Engineer  
Compiled by U. S. Geological Survey from aerial photographs  
Control by U. S. Geological Survey and U. S. Coast and Geodetic Survey  
Field examination in 1935



Datum is mean sea level

USGS  
Historical File  
Topographic Division  
FILE COPY  
TOPOGRAPHIC DIVISION

APPROXIMATE MEAN  
DECLINATION, 1935

Polyconic projection, 1927 North American datum  
10,000 foot grid based on North Carolina  
rectangular coordinate system

Ridge line  
Trail  
ROSMAN, N. C.  
185-NE